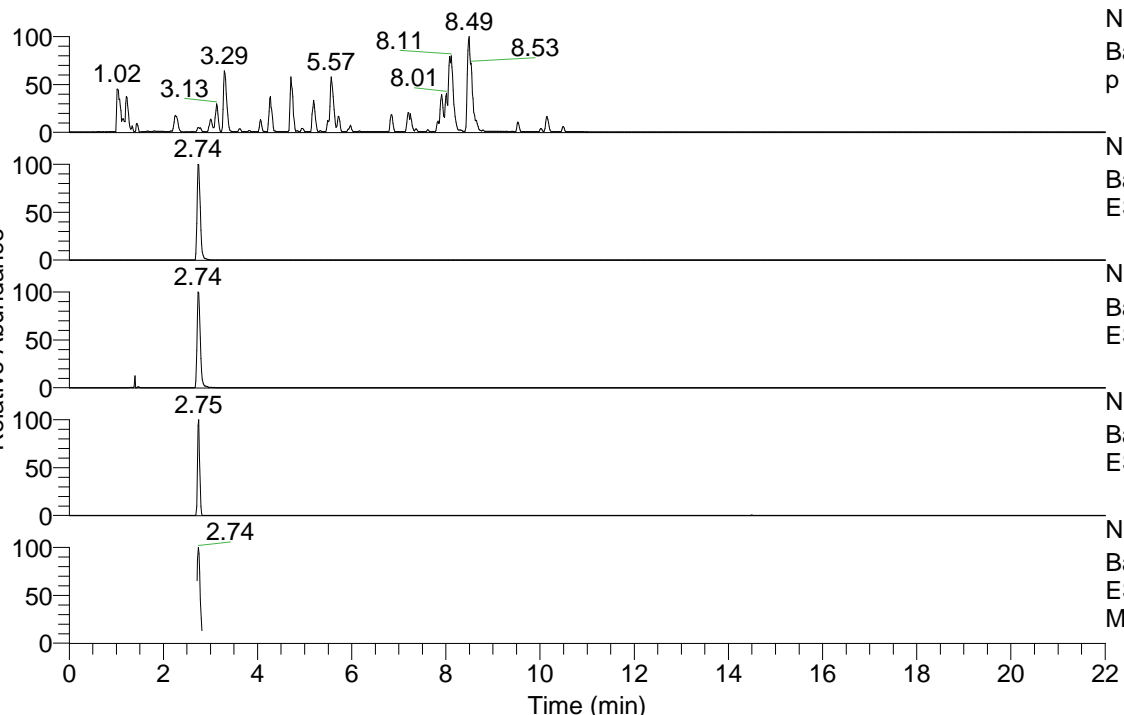


RT: 0.00 - 22.01



NL: 6.76E7
 Base Peak m/z= 100.00000-1500.00000 F: FTMS + p ESI Full ms [100.00-1500.00] MS Lcornutus

NL: 3.60E6
 Base Peak m/z= 284.09807-284.10091 F: FTMS + p ESI Full ms [100.00-1500.00] MS Lcornutus

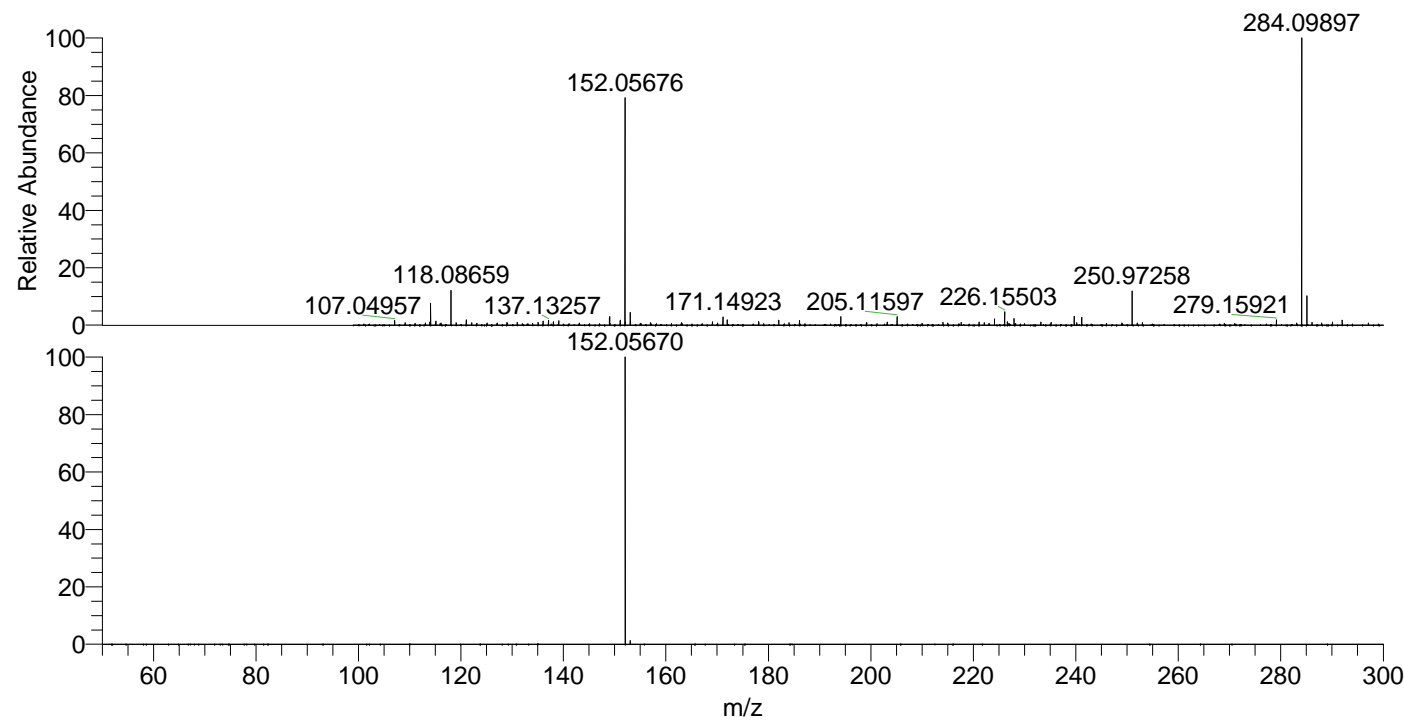
NL: 2.96E6
 Base Peak m/z= 152.05647-152.05799 F: FTMS + p ESI Full ms [100.00-1500.00] MS Lcornutus

NL: 4.24E5
 Base Peak m/z= 567.18832-567.19400 F: FTMS + p ESI Full ms [100.00-1500.00] MS Lcornutus

NL: 2.45E6
 Base Peak m/z= 50.00000-1500.00000 F: FTMS + p ESI d Full ms2 284.10@hcd35.00 [50.00-310.00] MS Lcornutus

Lcornutus#1084-1112 RT: 2.71-2.79 AV: 6
 F: FTMS + p ESI d Full ms2 284.10@h ...
 m/z= 50.00000-1000.00000

m/z	Intensity	Relative
152.05670	1764464.5	100.00
153.04083	23139.4	1.31



NL: 3.50E6
 Lcornutus#1093 RT: 2.74
 AV: 1 T: FTMS + p ESI
 Full lock ms
 [100.00-1500.00]

NL: 1.75E6
 Lcornutus#1082-1118 RT:
 2.71-2.79 AV: 6 F: FTMS
 + p ESI d Full ms2
 284.10@hcd35.00
 [50.00-310.00]