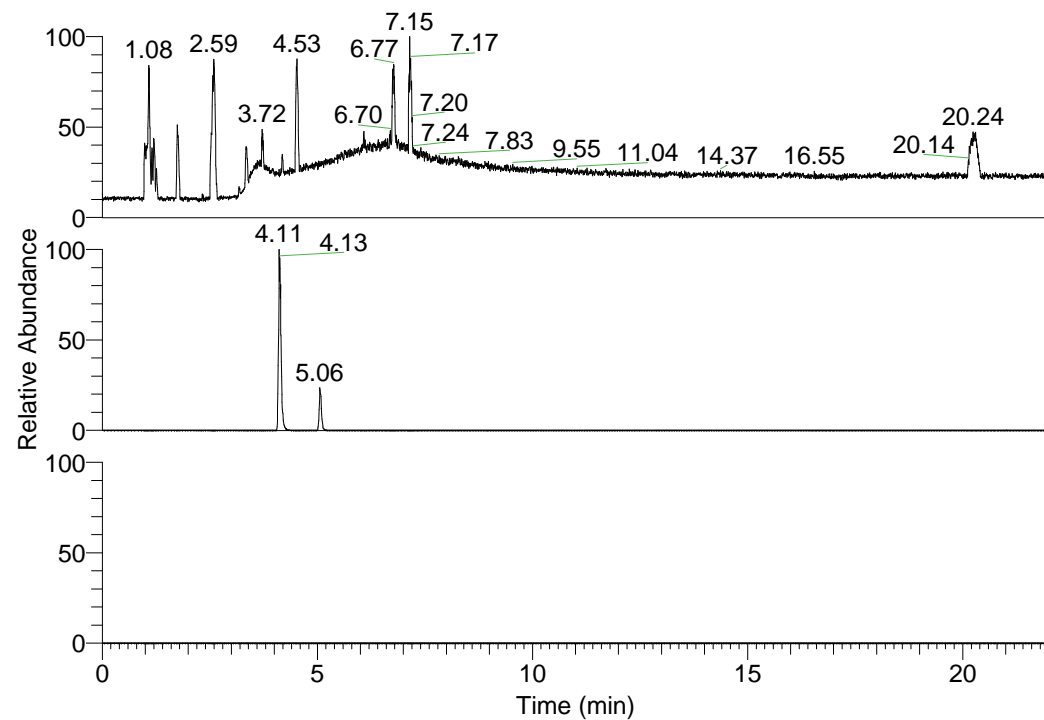


RT: 0.00 - 22.01



NL: 6.93E7
 Base Peak m/z=
 100.00000-1500.00000 F:
 FTMS + p ESI Full ms
 [100.00-1500.00] MS
 Lcornutus_HDX

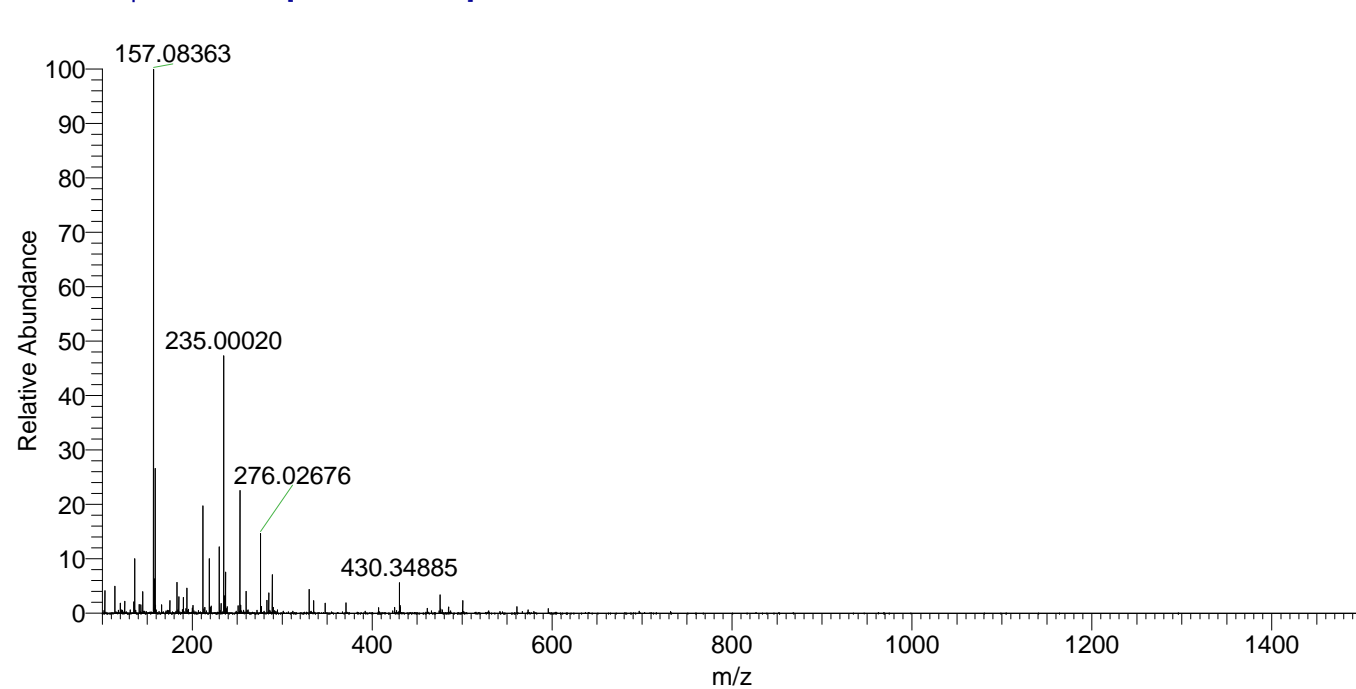
NL: 1.61E6
 Base Peak m/z=
 289.22426-289.22716 F:
 FTMS + p ESI Full ms
 [100.00-1500.00] MS
 Lcornutus_HDX

NL: 0
 Base Peak m/z=
 145.61917-145.62063 F:
 FTMS + p ESI Full ms
 [100.00-1500.00] MS
 Lcornutus_HDX

Lcornutus_HDX#640 RT: 4.11
 T: FTMS + p ESI Full ms [100.00-1500.00]
 m/z= 289.00000-290.00000

m/z	Intensity	Relative	Delta (ppm)	Composition
289.22513	1268211.9	100.00	-0.09	C ₁₄ H ₁₇ ² H ₇ O ₃ N ₃

Lcornutus_HDX #640 RT: 4.11 AV: 1 NL: 1.79E7
 T: FTMS + p ESI Full ms [100.00-1500.00]



Lcornutus_HDX #640 RT: 4.11 AV: 1 NL: 1.27E6
 T: FTMS + p ESI Full ms [100.00-1500.00]

