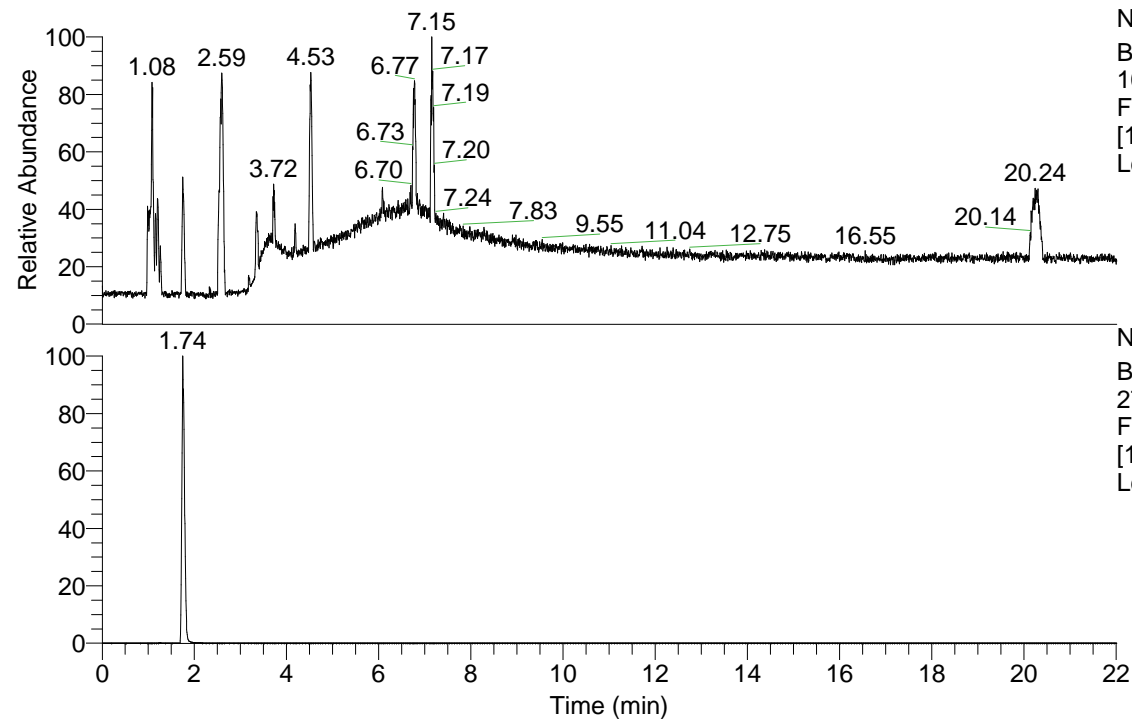


RT: 0.00 - 22.01

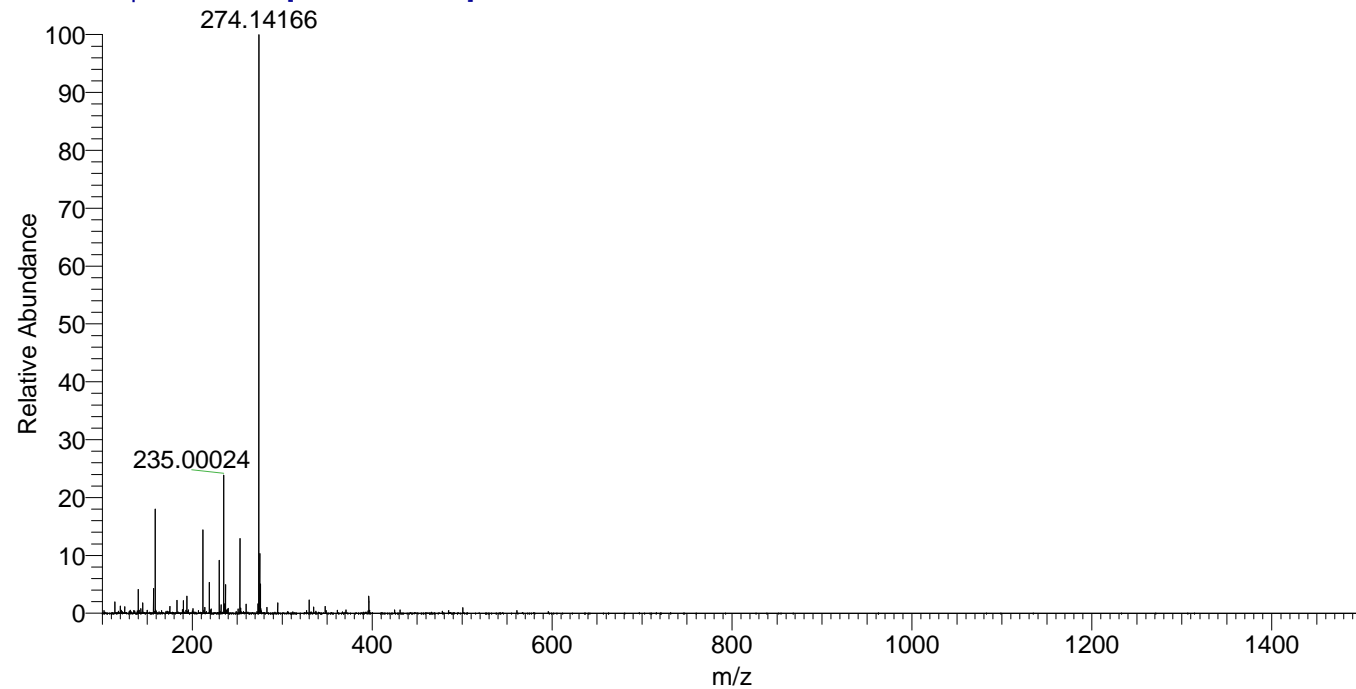


NL: 6.93E7
Base Peak m/z=
100.00000-1500.00000
F: FTMS + p ESI Full ms
[100.00-1500.00] MS
Lcornutus_HDX

Lcornutus_HDX#266 RT: 1.74
T: FTMS + p ESI Full ms [100.00-1500.00]
m/z= 274.00000-275.00000

m/z	Intensity	Relative	Delta (ppm)	Composition
274.14166	28084462.0	100.00	-0.10	C ₁₀ H ₈ ² H ₆ O ₄ N ₅

Lcornutus_HDX #266 RT: 1.74 AV: 1 NL: 2.80E7
T: FTMS + p ESI Full ms [100.00-1500.00]



Lcornutus_HDX #266 RT: 1.74 AV: 1 NL: 2.80E7
T: FTMS + p ESI Full ms [100.00-1500.00]

