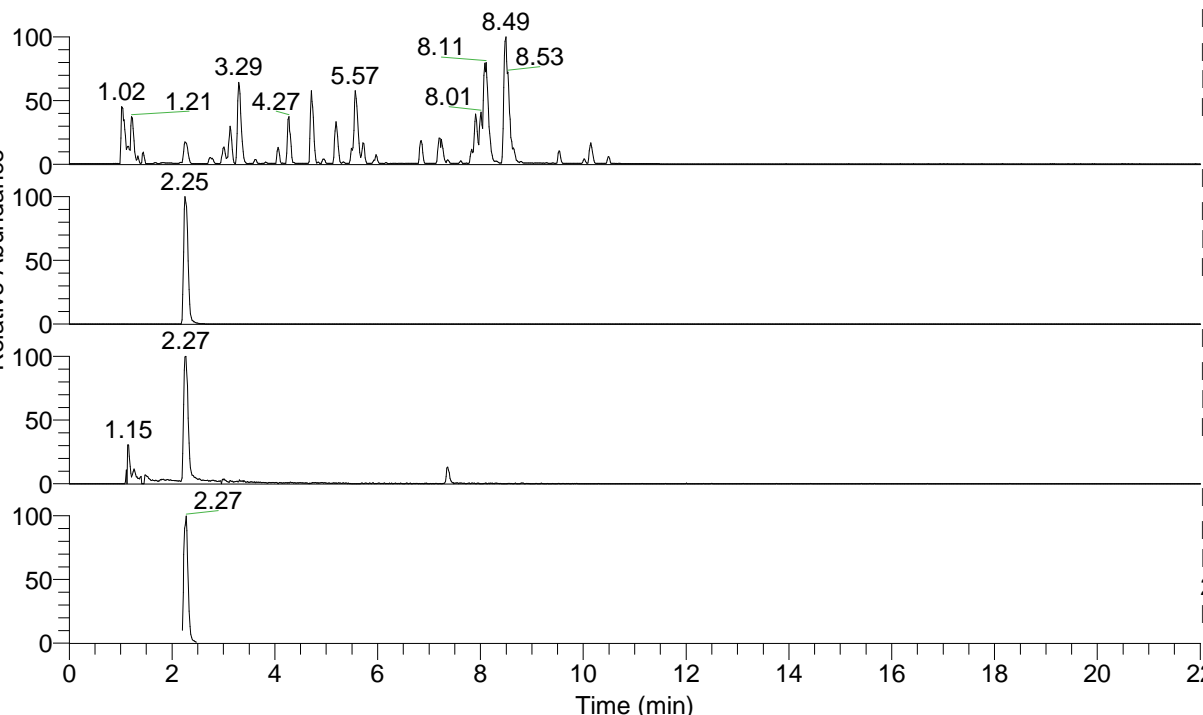


RT: 0.00 - 22.01



NL: 6.76E7
 Base Peak m/z= 100.00000-1500.00000 F:
 FTMS + p ESI Full ms [100.00-1500.00]
 MS Lcornutus

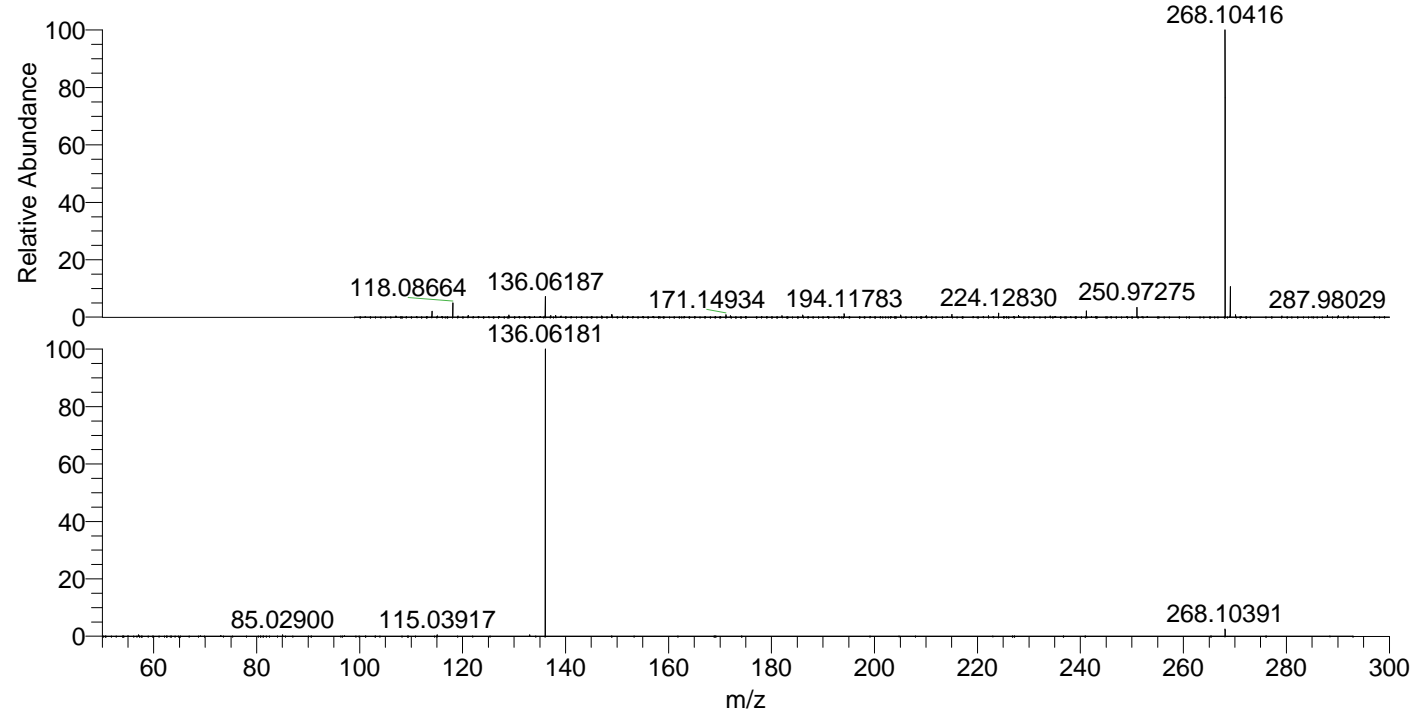
NL: 1.20E7
 Base Peak m/z= 268.10323-268.10591 F:
 FTMS + p ESI Full ms [100.00-1500.00]
 MS Lcornutus

NL: 8.63E5
 Base Peak m/z= 136.06164-136.06300 F:
 FTMS + p ESI Full ms [100.00-1500.00]
 MS Lcornutus

NL: 7.10E6
 Base Peak m/z= 50.00000-1500.00000 F:
 FTMS + p ESI d Full ms2
 268.10@hcd35.00 [50.00-290.00] MS
 Lcornutus

Lcornutus#886-926 RT: 2.22-2.32 AV: 8
 F: FTMS + p ESI d Full ms2 268.10@h ...
 m/z= 50.00000-1000.00000

| m/z | Intensity | Relative |
|-----------|-----------|----------|
| 57.03428 | 25354.1 | 0.52 |
| 85.02900 | 27235.4 | 0.55 |
| 115.03917 | 26397.9 | 0.54 |
| 133.04975 | 25824.7 | 0.53 |
| 136.06181 | 4914962.5 | 100.00 |
| 268.10391 | 124533.9 | 2.53 |



NL: 1.20E7
 Lcornutus#901 RT: 2.25
 AV: 1 T: FTMS + p ESI
 Full lock ms
 [100.00-1500.00]

NL: 4.91E6
 Lcornutus#883-926 RT:
 2.22-2.32 AV: 8 F: FTMS
 + p ESI d Full ms2
 268.10@hcd35.00
 [50.00-290.00]

NL: 4.91E6
 Lcornutus#883-926 RT:
 2.22-2.32 AV: 8 F: FTMS
 + p ESI d Full ms2
 268.10@hcd35.00
 [50.00-290.00]