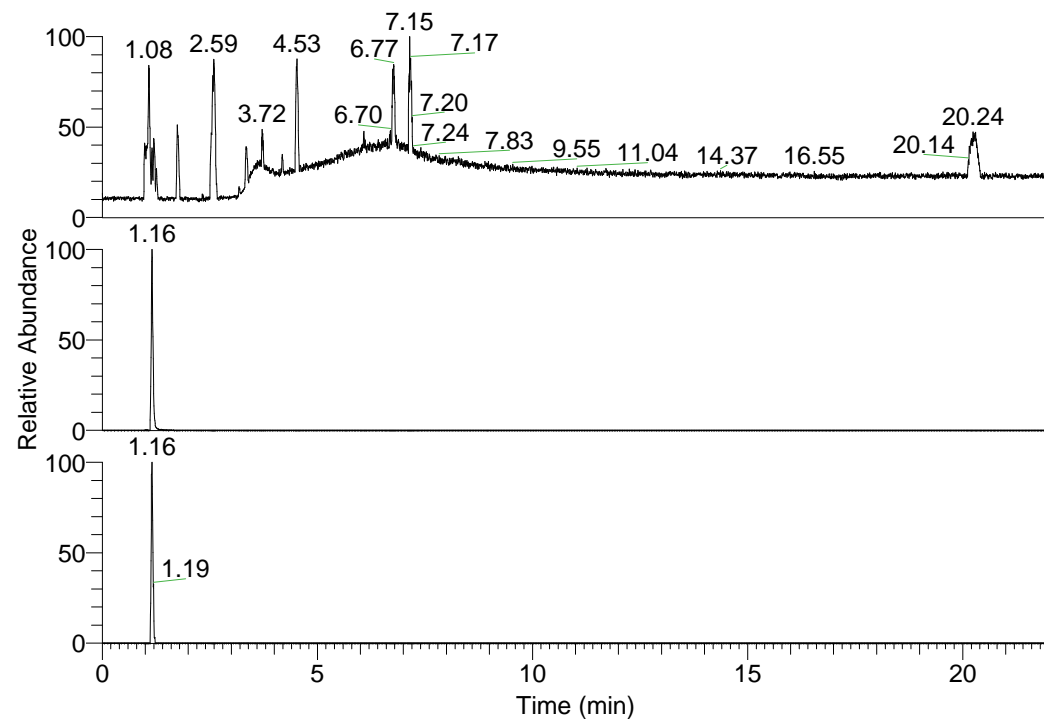


RT: 0.00 - 22.01



NL: 6.93E7  
Base Peak m/z=  
100.00000-1500.00000 F:  
FTMS + p ESI Full ms  
[100.00-1500.00] MS  
Lcornutus\_HDX

Lcornutus\_HDX#177 RT: 1.16  
T: FTMS + p ESI Full ms [100.00-1500.00]

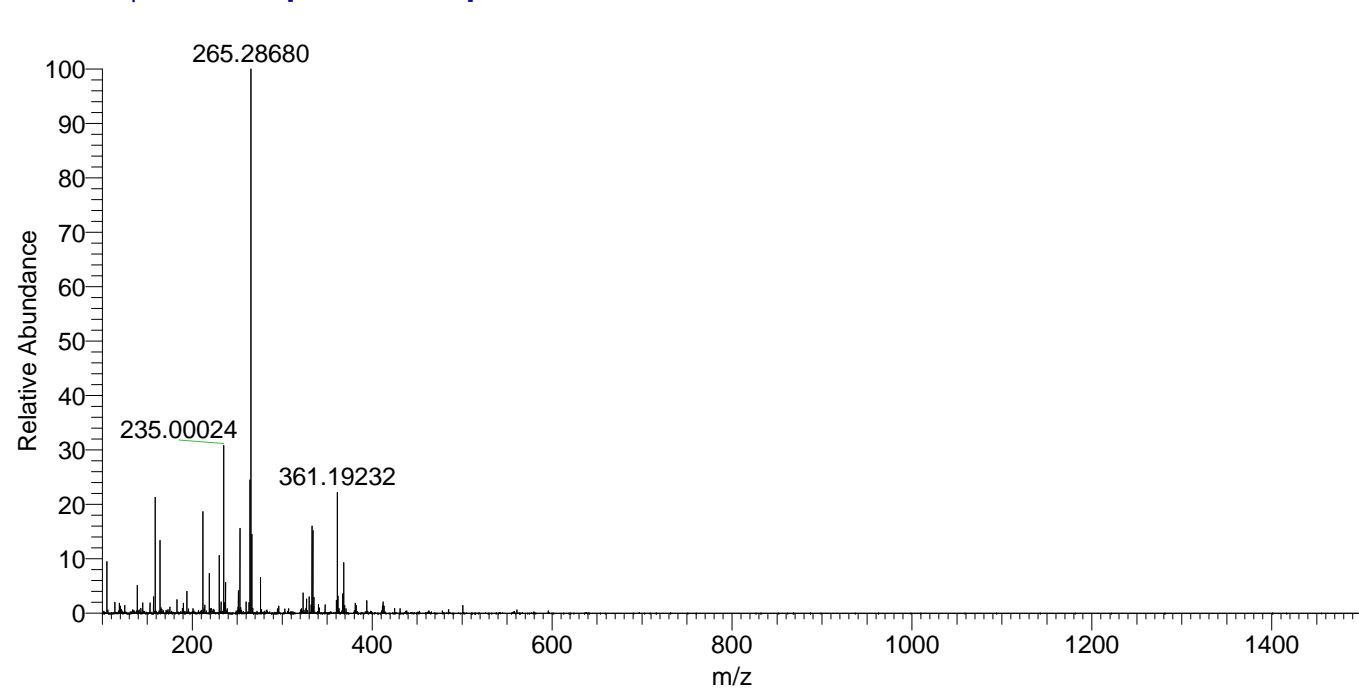
m/z = 265.00000-266.00000

m/z	Intensity	Relative	Delta (ppm)	Composition
265.28680	25499336.0	100.00	-0.36	C <sub>13</sub> H <sub>25</sub> <sup>2</sup> H <sub>6</sub> O <sub>N</sub> <sub>4</sub>

NL: 2.67E7  
Base Peak m/z=  
265.28612-265.28878 F:  
FTMS + p ESI Full ms  
[100.00-1500.00] MS  
Lcornutus\_HDX

NL: 1.75E5  
Base Peak m/z=  
133.65011-133.65145 F:  
FTMS + p ESI Full ms  
[100.00-1500.00] MS  
Lcornutus\_HDX

Lcornutus\_HDX #177 RT: 1.16 AV: 1 NL: 2.45E7  
T: FTMS + p ESI Full ms [100.00-1500.00]



Lcornutus\_HDX #177 RT: 1.16 AV: 1 NL: 2.45E7  
T: FTMS + p ESI Full ms [100.00-1500.00]

