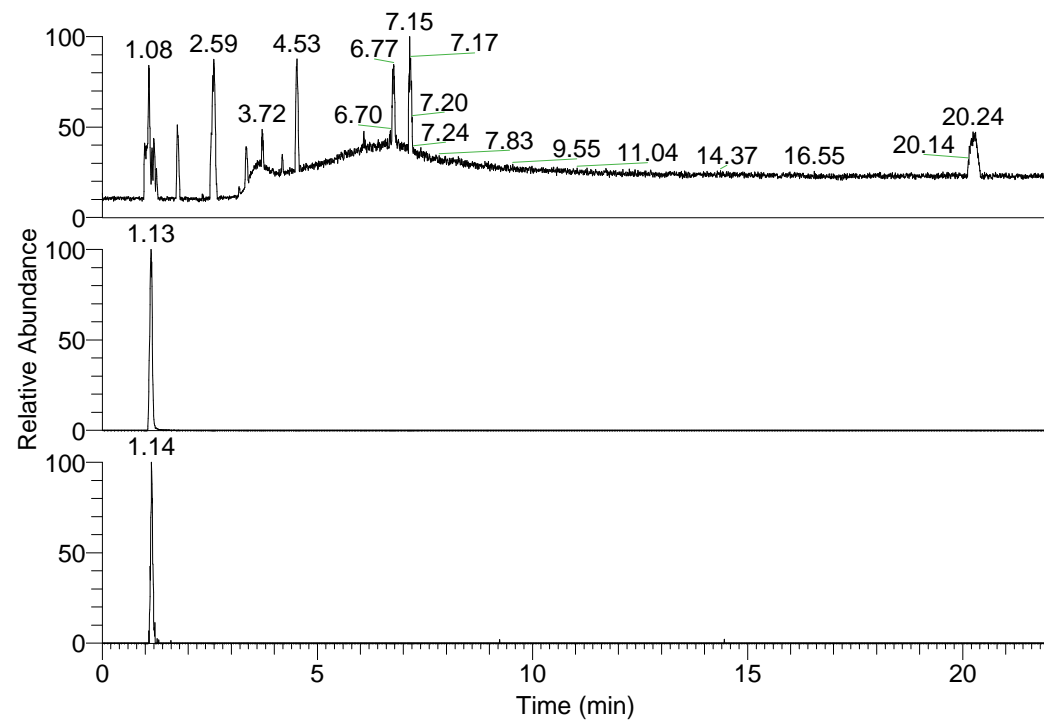


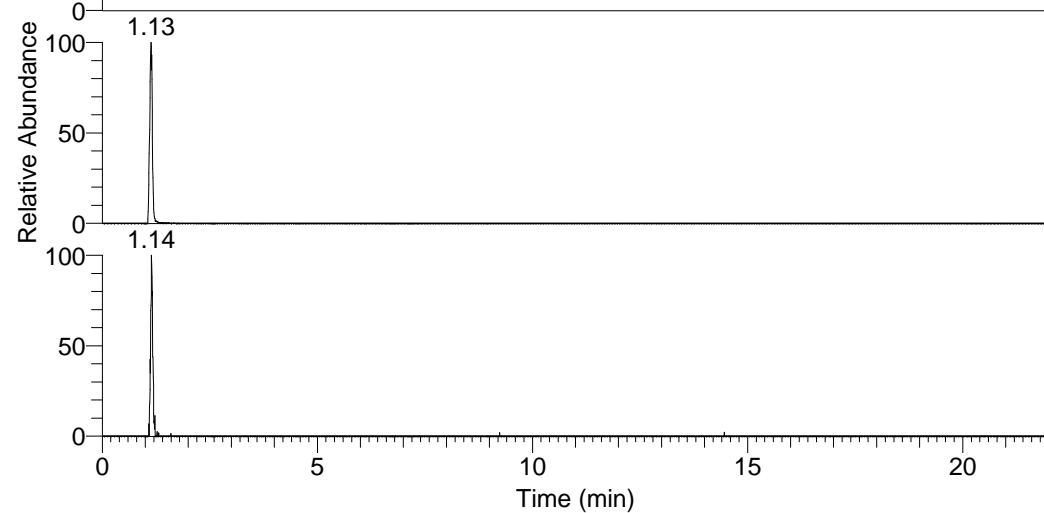
RT: 0.00 - 22.01



NL: 6.93E7
Base Peak m/z=
100.00000-1500.00000 F:
FTMS + p ESI Full ms
[100.00-1500.00] MS
Lcornutus_HDX

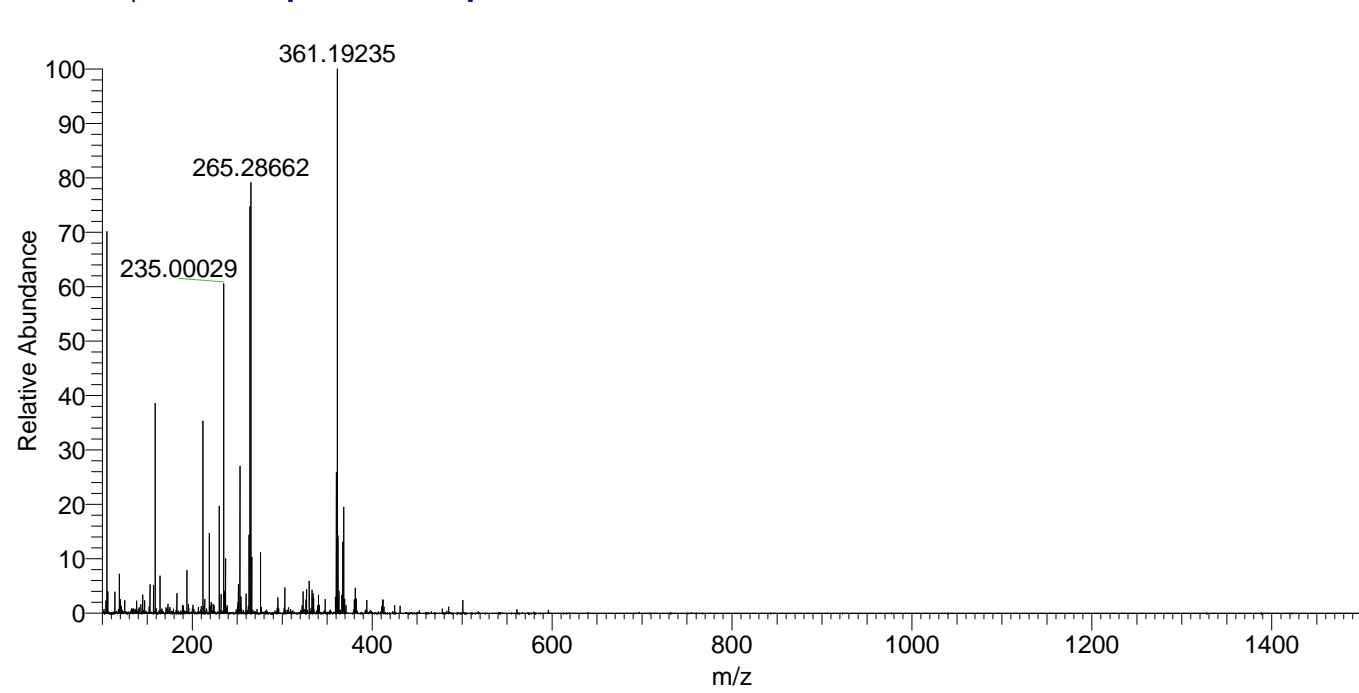
Lcornutus_HDX#172 RT: 1.13
T: FTMS + p ESI Full ms [100.00-1500.00]
m/z= 264.00000-265.00000

m/z	Intensity	Relative	Delta (ppm)	Composition
264.28067	9585551.0	100.00	0.18	C ₁₃ H ₂₆ ² H ₅ ON ₄



NL: 9.59E6
Base Peak m/z=
264.27985-264.28249 F:
FTMS + p ESI Full ms
[100.00-1500.00] MS
Lcornutus_HDX

Lcornutus_HDX #172 RT: 1.13 AV: 1 NL: 1.28E7
T: FTMS + p ESI Full ms [100.00-1500.00]



Lcornutus_HDX #172 RT: 1.13 AV: 1 NL: 1.01E7
T: FTMS + p ESI Full ms [100.00-1500.00]

