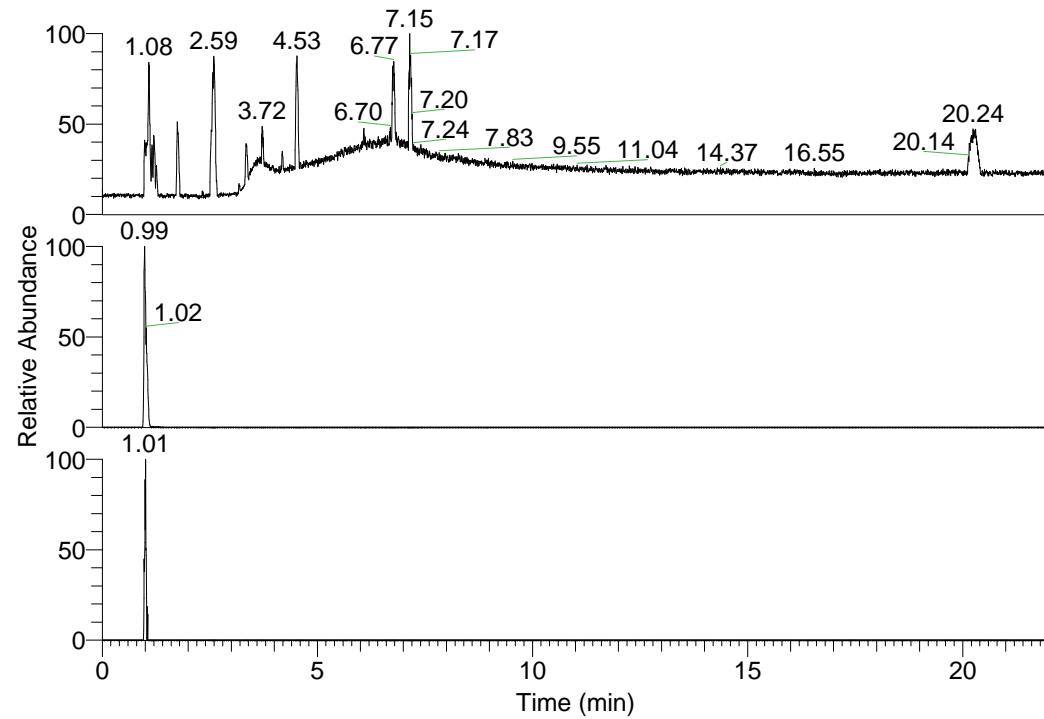


RT: 0.00 - 22.01



NL: 6.93E7
 Base Peak m/z=
 100.00000-1500.00000 F:
 FTMS + p ESI Full ms
 [100.00-1500.00] MS
 Lcornutus_HDX

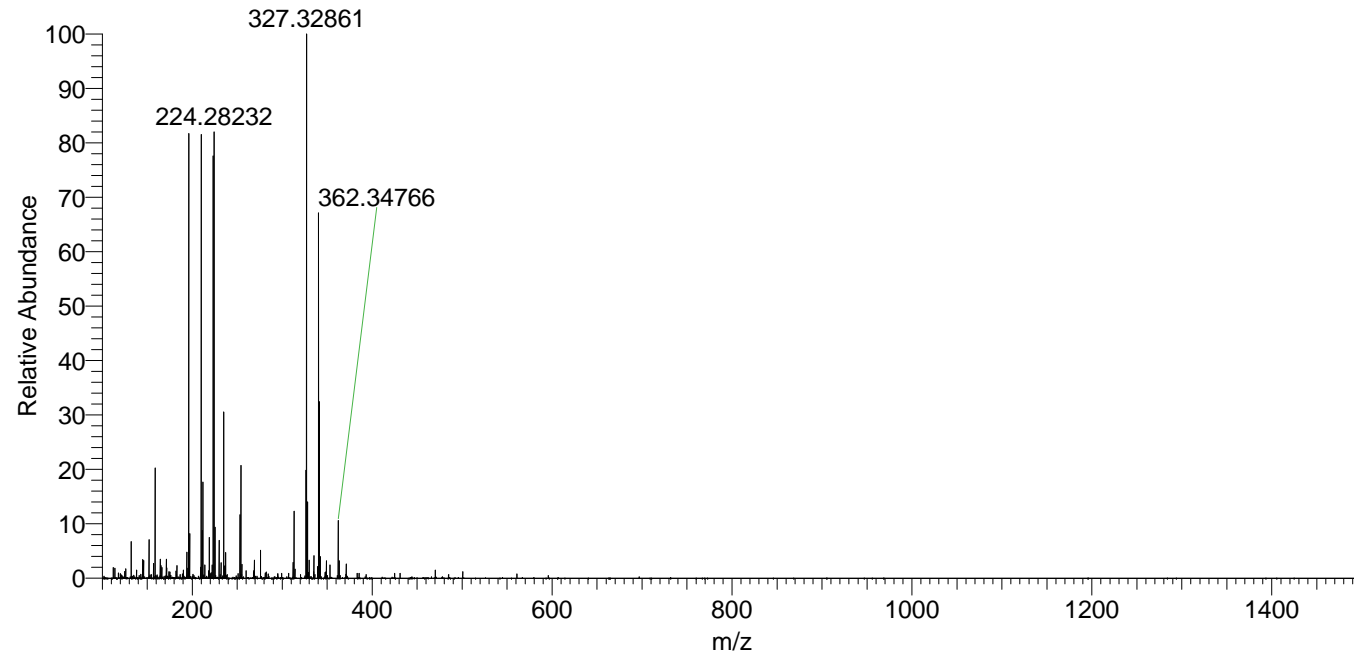
NL: 6.37E6
 Base Peak m/z=
 254.31472-254.31726 F:
 FTMS + p ESI Full ms
 [100.00-1500.00] MS
 Lcornutus_HDX

NL: 6.37E4
 Base Peak m/z=
 128.16440-128.16568 F:
 FTMS + p ESI Full ms
 [100.00-1500.00] MS
 Lcornutus_HDX

Lcornutus_HDX#147 RT: 0.99
 T: FTMS + p ESI Full ms [100.00-1500.00]
 m/z= 254.00000-255.00000

m/z	Intensity	Relative	Delta (ppm)	Composition
254.31538	5569457.5	100.00	-0.21	C ₁₂ H ₂₄ ² H ₈ N ₅

Lcornutus_HDX #147 RT: 0.99 AV: 1 NL: 2.61E7
 T: FTMS + p ESI Full ms [100.00-1500.00]



Lcornutus_HDX #147 RT: 0.99 AV: 1 NL: 5.41E6
 T: FTMS + p ESI Full ms [100.00-1500.00]

