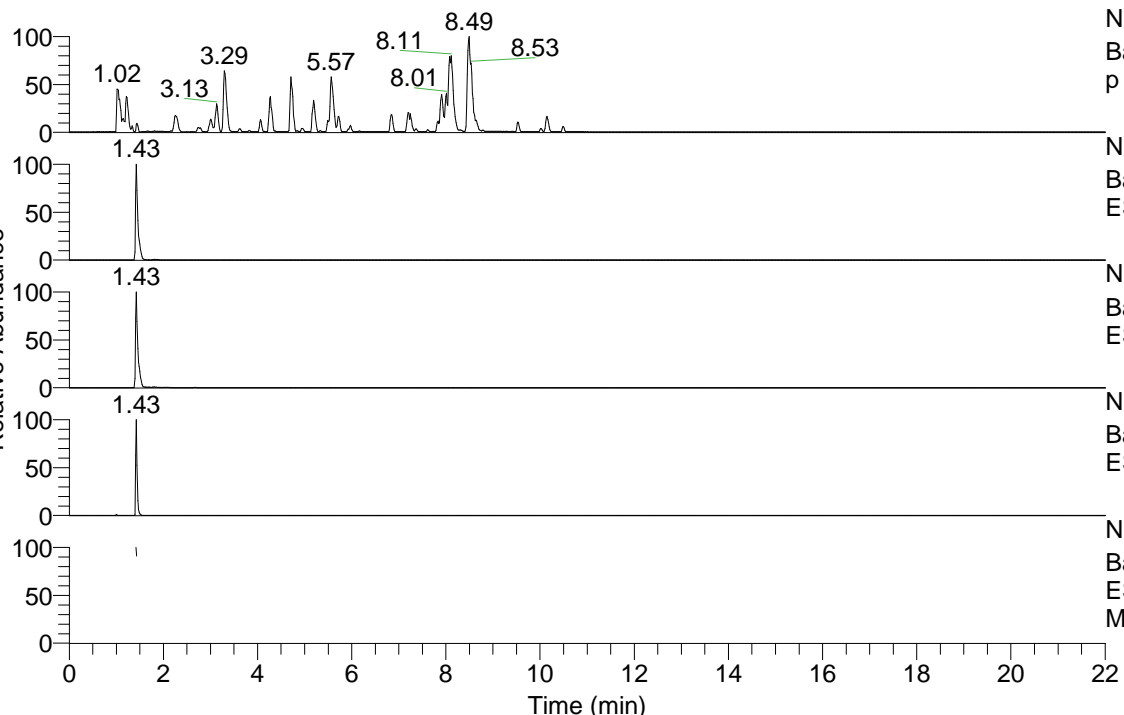


RT: 0.00 - 22.01



NL: 6.76E7
 Base Peak m/z= 100.00000-1500.00000 F: FTMS + p ESI Full ms [100.00-1500.00] MS Lcornutus

NL: 1.42E6
 Base Peak m/z= 244.09212-244.09456 F: FTMS + p ESI Full ms [100.00-1500.00] MS Lcornutus

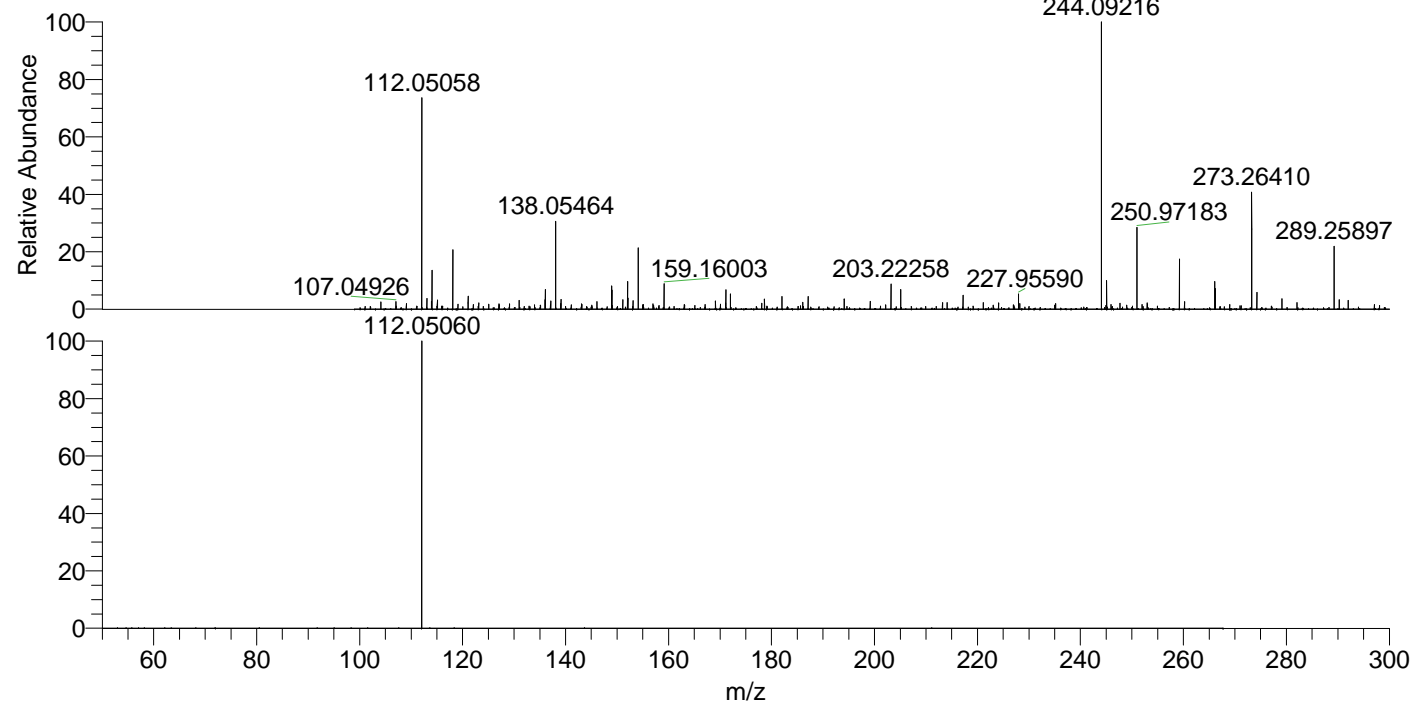
NL: 1.08E6
 Base Peak m/z= 112.05053-112.05165 F: FTMS + p ESI Full ms [100.00-1500.00] MS Lcornutus

NL: 1.61E6
 Base Peak m/z= 487.17643-487.18131 F: FTMS + p ESI Full ms [100.00-1500.00] MS Lcornutus

NL: 1.03E6
 Base Peak m/z= 50.00000-1500.00000 F: FTMS + p ESI d Full ms2 244.09@hcd35.00 [50.00-265.00] MS Lcornutus

Lcornutus#569-573 RT: 1.42-1.43 AV: 2
 F: FTMS + p ESI d Full ms2 244.09 ...
 m/z= 50.00000-1000.00000

m/z	Intensity	Relative
112.05060	925047.1	100.00



NL: 1.38E6
 Lcornutus#571 RT: 1.43
 AV: 1 T: FTMS + p ESI
 Full lock ms
 [100.00-1500.00]

NL: 9.25E5
 Lcornutus#560-577 RT:
 1.42-1.43 AV: 2 F: FTMS
 + p ESI d Full ms2
 244.09@hcd35.00
 [50.00-265.00]