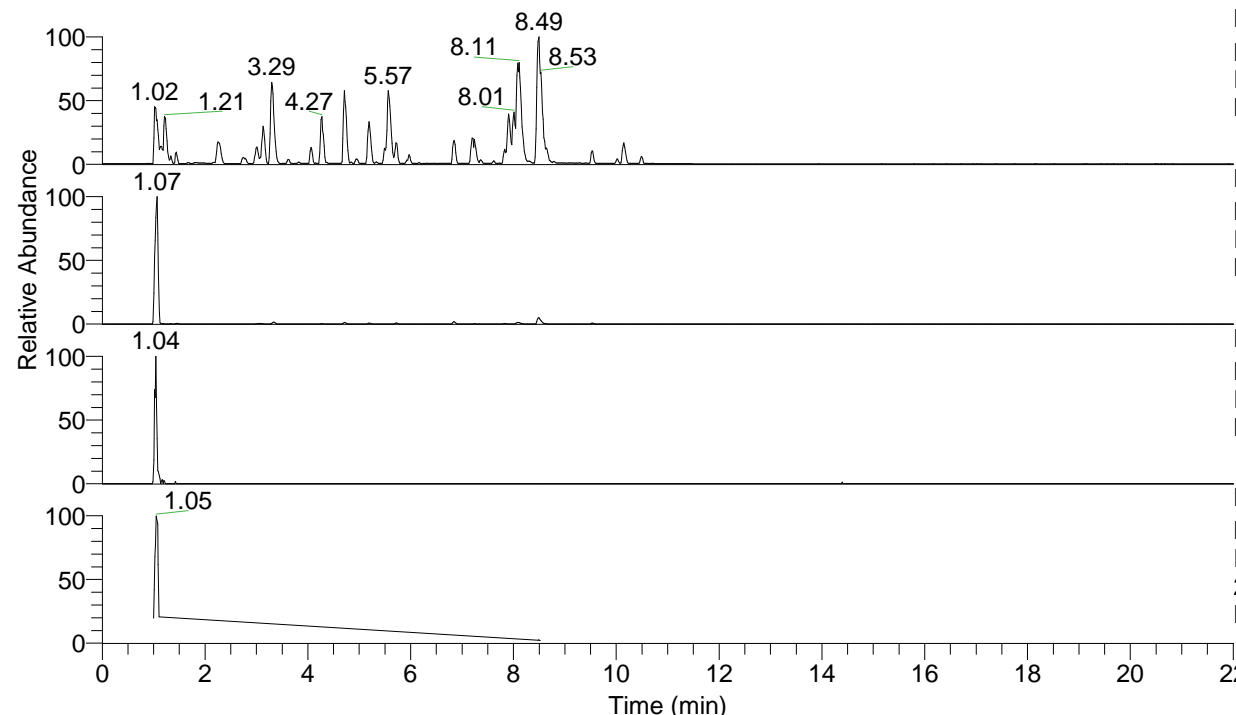


RT: 0.00 - 22.01



NL: 6.76E7
 Base Peak m/z= 100.00000-1500.00000 F:
 FTMS + p ESI Full ms [100.00-1500.00]
 MS Lcornutus

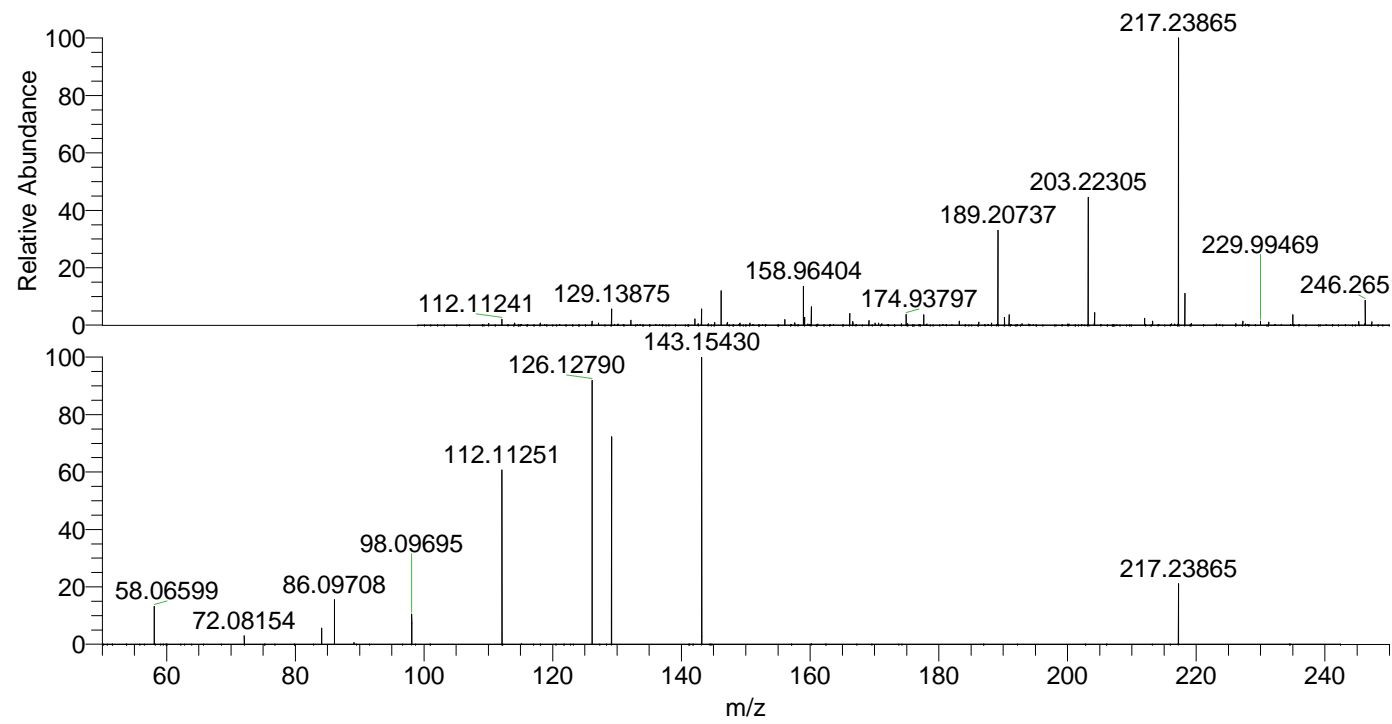
NL: 2.17E7
 Base Peak m/z= 217.23813-217.24031 F:
 FTMS + p ESI Full ms [100.00-1500.00]
 MS Lcornutus

NL: 7.55E4
 Base Peak m/z= 109.12297-109.12407 F:
 FTMS + p ESI Full ms [100.00-1500.00]
 MS Lcornutus

NL: 2.95E6
 Base Peak m/z= 50.00000-1500.00000 F:
 FTMS + p ESI d Full ms2
 217.24@hcd35.00 [50.00-240.00] MS
 Lcornutus

Lcornutus#396-435 RT: 1.00-1.09 AV: 7
 F: FTMS + p ESI d Full ms2 217.24@h ...
 m/z= 50.00000-1000.00000

m/z	Intensity	Relative
58.06599	245991.1	13.34
72.08154	55055.3	2.99
84.08141	103209.1	5.60
86.09708	296642.3	16.08
89.10796	11446.9	0.62
98.09695	199661.7	10.83
112.11251	1122760.8	60.88
126.12790	1702557.0	92.32
129.13878	1380907.1	74.88
143.15430	1844216.9	100.00
217.23865	390870.2	21.19



NL: 2.12E7
 Lcornutus#427 RT: 1.07
 AV: 1 T: FTMS + p ESI
 Full ms [100.00-1500.00]

NL: 1.84E6
 Lcornutus#396-441 RT:
 1.00-1.09 AV: 7 F: FTMS
 + p ESI d Full ms2
 217.24@hcd35.00
 [50.00-240.00]