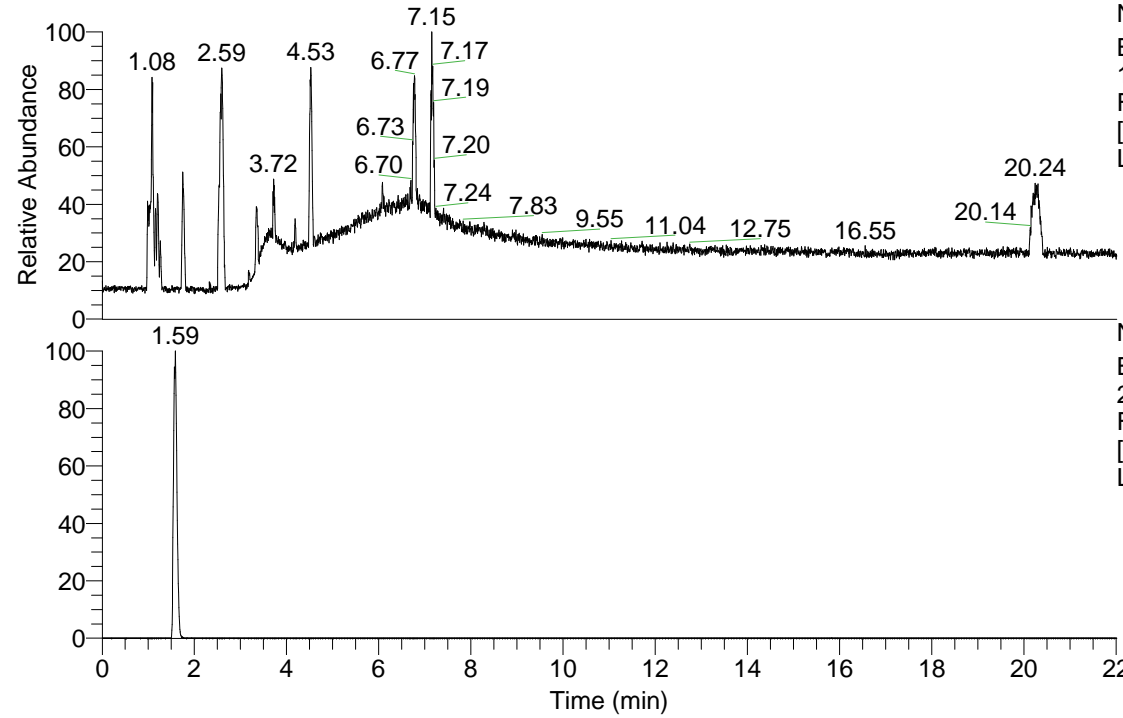


RT: 0.00 - 22.01

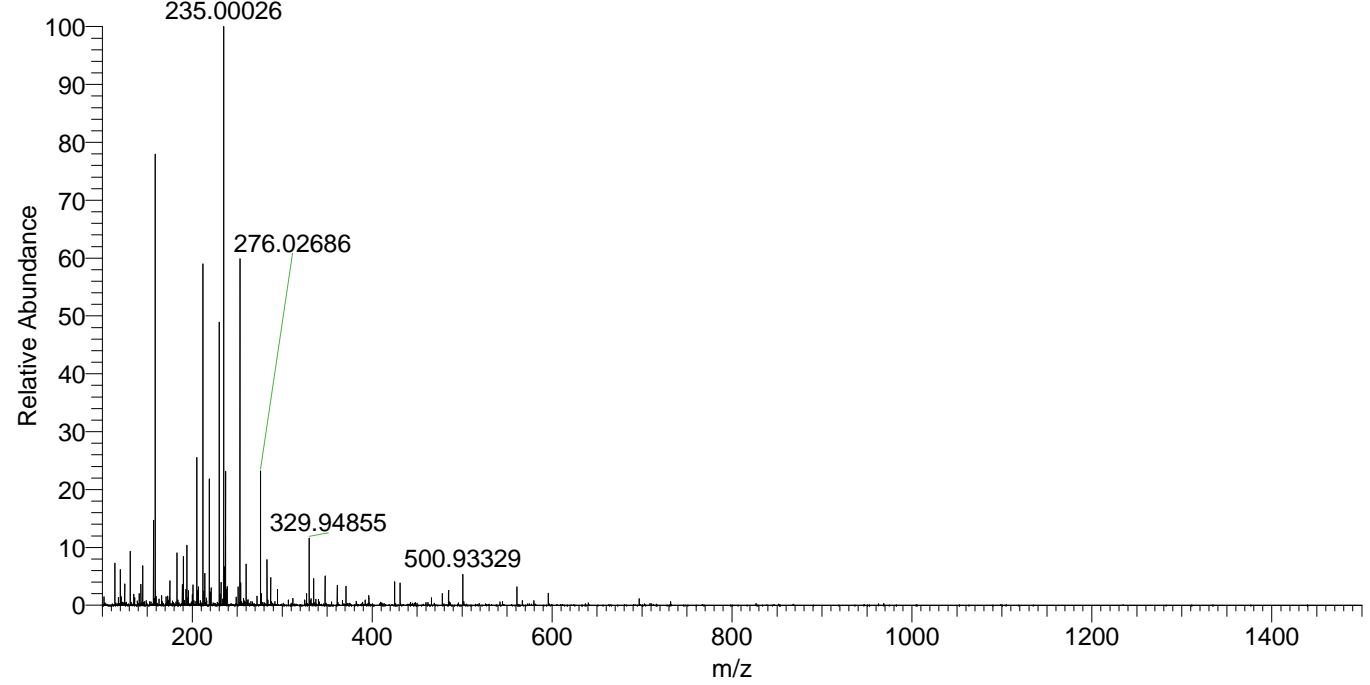


NL: 6.93E7
Base Peak m/z=
100.00000-1500.00000
F: FTMS + p ESI Full ms
[100.00-1500.00] MS
Lcornutus_HDX

Lcornutus_HDX#243 RT: 1.59
T: FTMS + p ESI Full ms [100.00-1500.00]
m/z= 205.00000-206.00000

m/z	Intensity	Relative	Delta (ppm)	Composition
205.12953	1874850.5	100.00	1.08	C ₉ H ₁₇ ² H O ₄ N

Lcornutus_HDX #243 RT: 1.59 AV: 1 NL: 7.33E6
T: FTMS + p ESI Full ms [100.00-1500.00]



NL: 1.87E6
Base Peak m/z=
205.12883-205.13089 F:
FTMS + p ESI Full ms
[100.00-1500.00] MS
Lcornutus_HDX

Lcornutus_HDX #243 RT: 1.59 AV: 1 NL: 4.32E6
T: FTMS + p ESI Full ms [100.00-1500.00]

