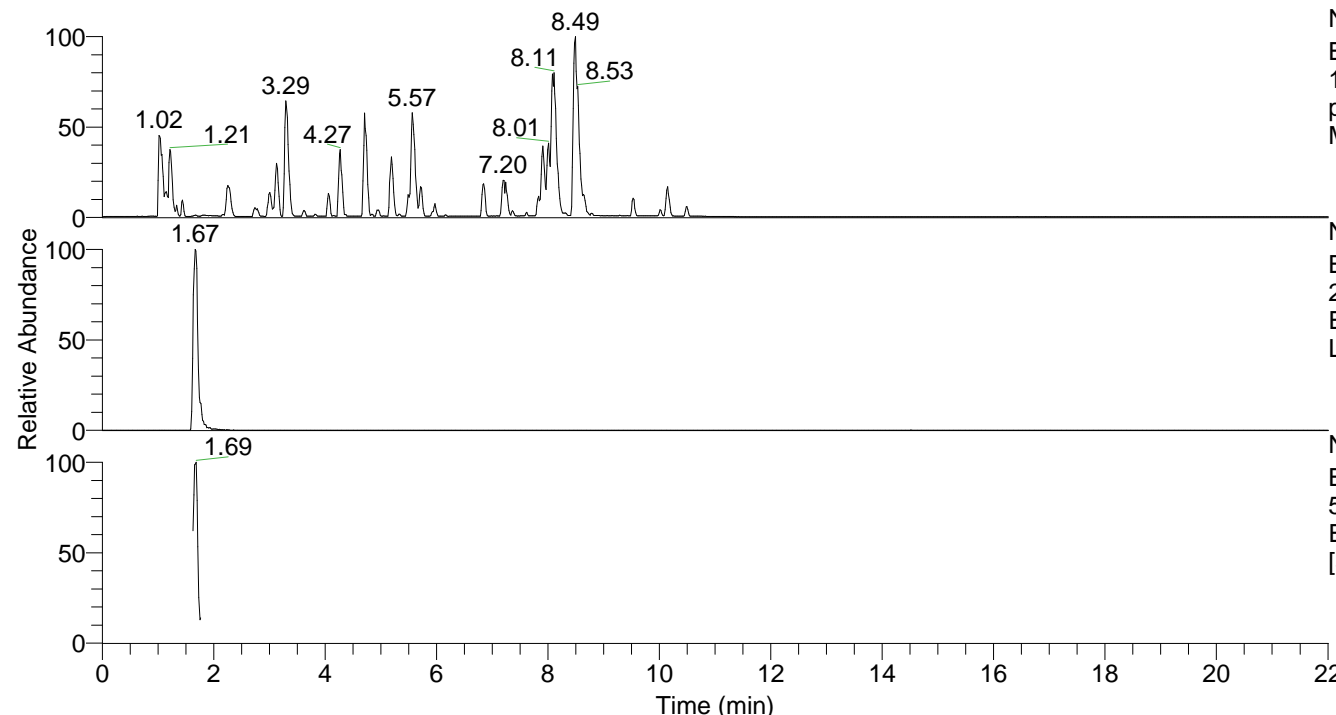


RT: 0.00 - 22.01



NL: 6.76E7
 Base Peak m/z=
 100.00000-1500.00000 F: FTMS +
 p ESI Full ms [100.00-1500.00]
 MS Lcornutus

NL: 9.05E5
 Base Peak m/z=
 204.12256-204.12460 F: FTMS + p
 ESI Full ms [100.00-1500.00] MS
 Lcornutus

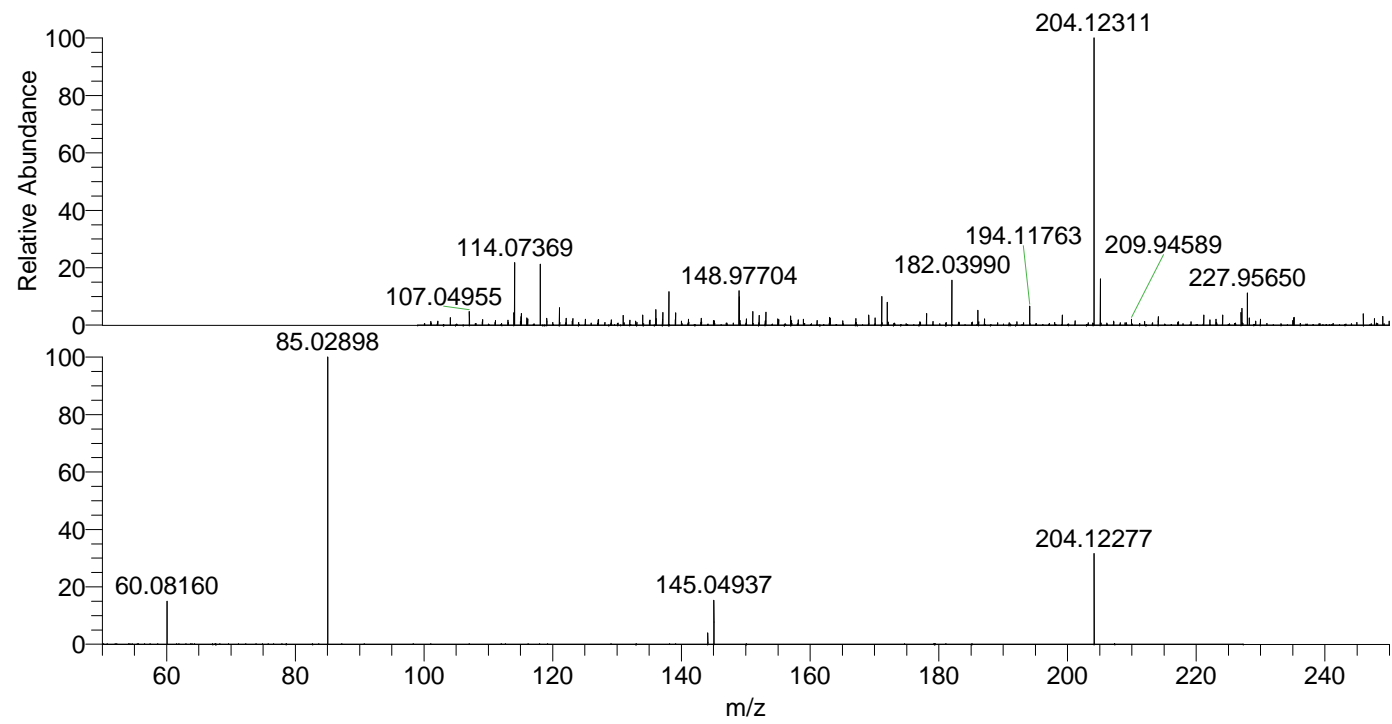
NL: 3.05E5
 Base Peak m/z=
 50.00000-1500.00000 F: FTMS + p
 ESI d Full ms2 204.12@hcd35.00
 [50.00-225.00] MS Lcornutus

Lcornutus#652-680 RT: 1.63-1.70 AV: 6

F: FTMS + p ESI d Full ms2 204.12 ...

m/z = 50.00000-1000.00000

m/z	Intensity	Relative
60.08160	37287.0	14.86
85.02898	250942.4	100.00
144.10226	8912.3	3.55
145.04937	38245.5	15.24
204.12278	79104.4	31.52



NL: 9.03E5
 Lcornutus#667 RT: 1.67
 AV: 1 T: FTMS + p ESI
 Full lock ms
 [100.00-1500.00]

NL: 2.65E5
 Lcornutus#655-685 RT:
 1.64-1.70 AV: 5 F: FTMS
 + p ESI d Full ms2
 204.12@hcd35.00
 [50.00-225.00]