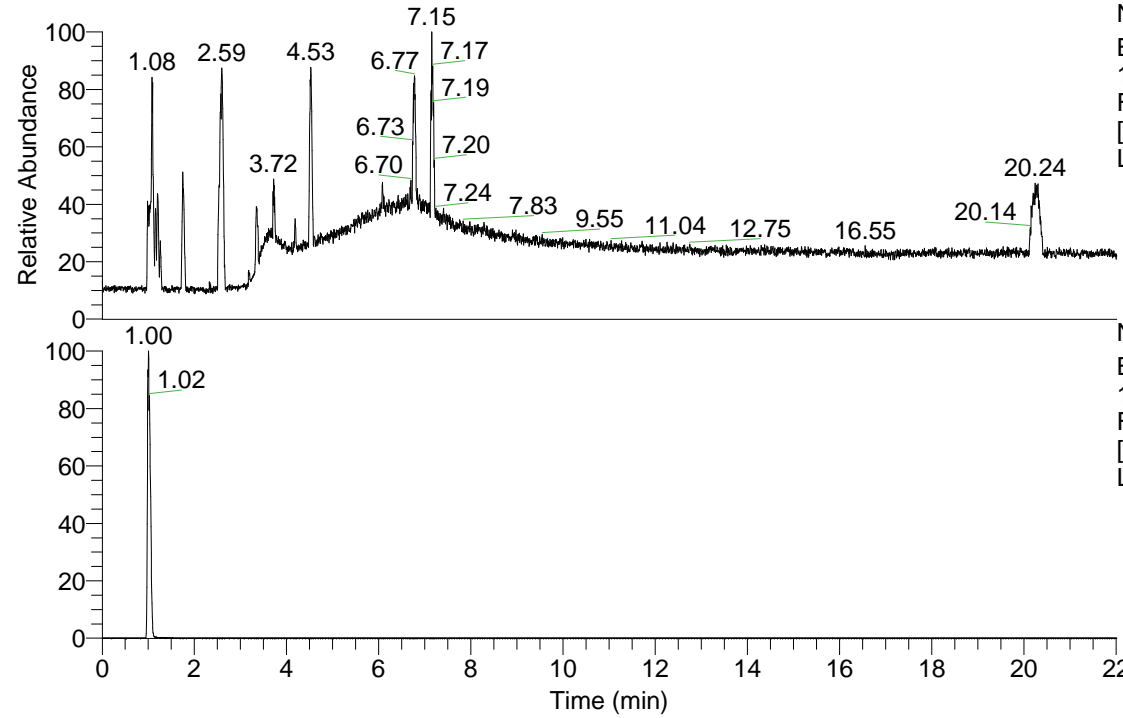


RT: 0.00 - 22.01

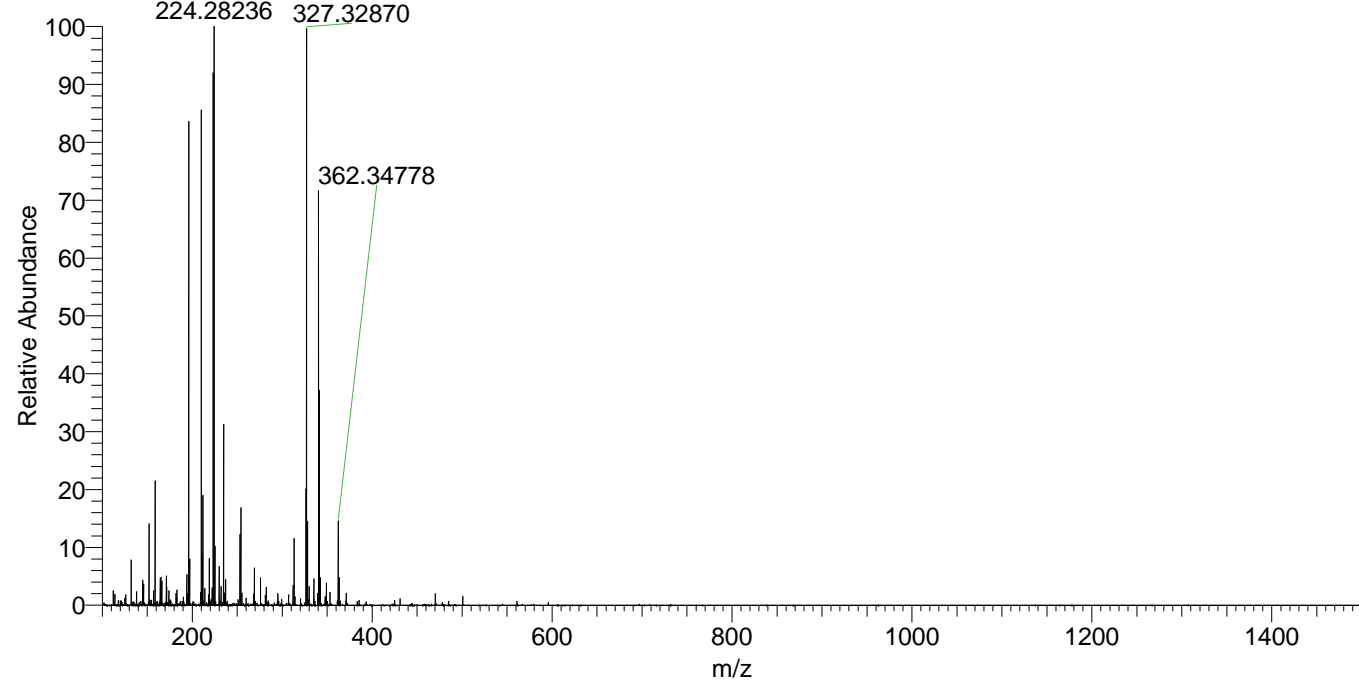


NL: 6.93E7
Base Peak m/z=
100.00000-1500.00000
F: FTMS + p ESI Full ms
[100.00-1500.00] MS
Lcornutus_HDX

Lcornutus_HDX#149 RT: 1.00
T: FTMS + p ESI Full ms [100.00-1500.00]
m/z= 196.00000-197.00000

m/z	Intensity	Relative	Delta (ppm)	Composition
196.25146	23020734.0	100.00	0.79	C ₉ H ₁₈ ² H ₇ N ₄

Lcornutus_HDX #149 RT: 1.00 AV: 1 NL: 2.69E7
T: FTMS + p ESI Full ms [100.00-1500.00]



NL: 2.30E7
Base Peak m/z=
196.25088-196.25284 F:
FTMS + p ESI Full ms
[100.00-1500.00] MS
Lcornutus_HDX

Lcornutus_HDX #149 RT: 1.00 AV: 1 NL: 2.25E7
T: FTMS + p ESI Full ms [100.00-1500.00]

