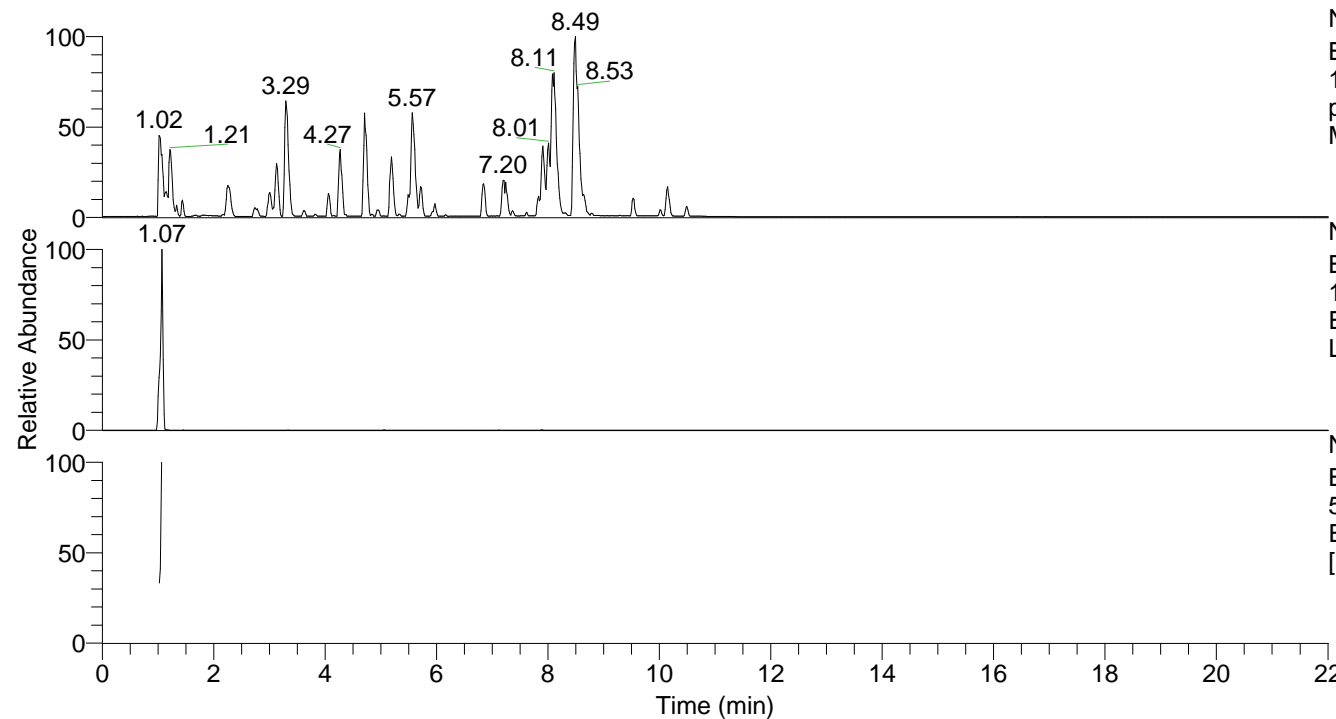


RT: 0.00 - 22.01



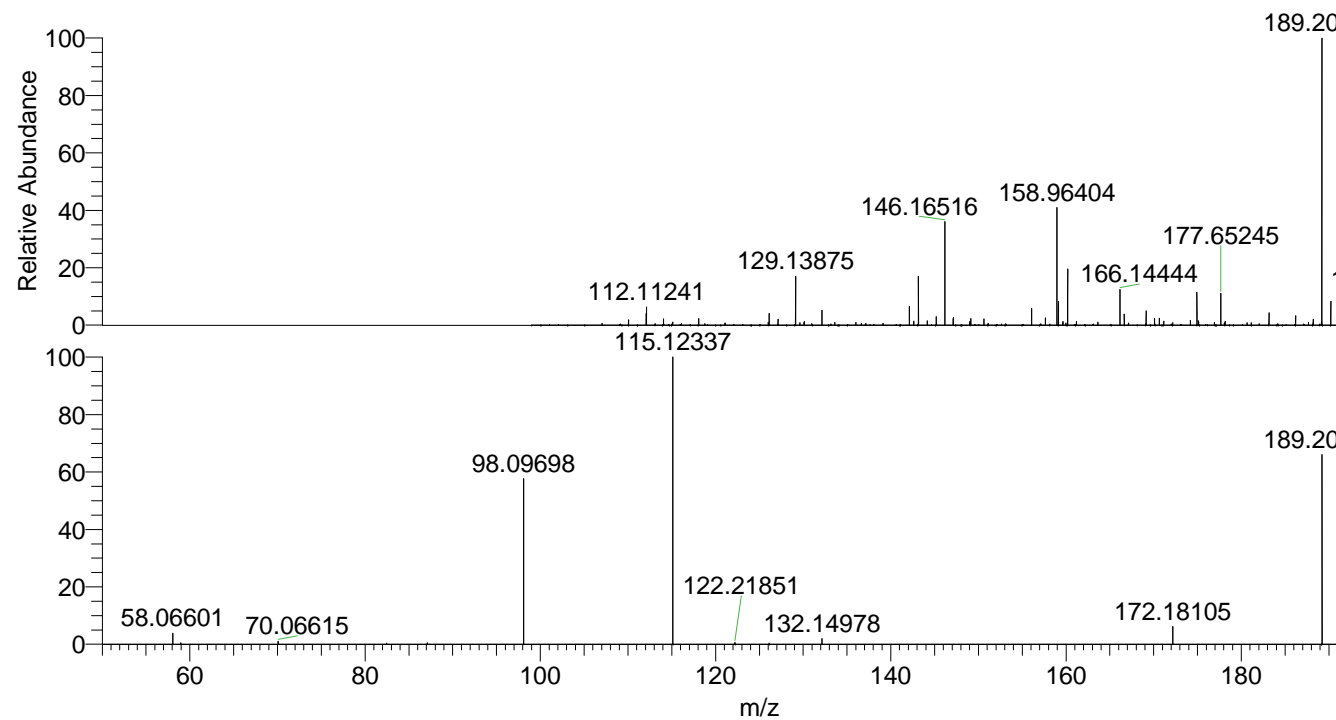
NL: 6.76E7
 Base Peak m/z=
 100.00000-1500.00000 F: FTMS +
 p ESI Full ms [100.00-1500.00]
 MS Lcornutus

NL: 7.11E6
 Base Peak m/z=
 189.20697-189.20887 F: FTMS + p
 ESI Full ms [100.00-1500.00] MS
 Lcornutus

NL: 1.59E6
 Base Peak m/z=
 50.00000-1500.00000 F: FTMS + p
 ESI d Full ms2 189.21@hcd35.00
 [50.00-210.00] MS Lcornutus

Lcornutus#414 RT: 1.04
 F: FTMS + p ESI d Full ms2 189.21 ...
 m/z= 50.00000-1000.00000

m/z	Intensity	Relative
58.06601	25026.1	3.81
70.06615	7022.1	1.07
98.08757	4115.9	0.63
98.09698	367112.1	55.86
115.12337	657231.9	100.00
122.21851	3680.0	0.56
132.14978	12670.9	1.93
172.18105	40139.1	6.11
189.20752	420437.3	63.97



NL: 6.99E6
 Lcornutus#427 RT:
 1.07 AV: 1 T: FTMS +
 p ESI Full ms
 [100.00-1500.00]

NL: 6.35E5
 Lcornutus#408 RT:
 1.04 AV: 1 F: FTMS +
 p ESI d Full ms2
 189.21@hcd35.00
 [50.00-210.00]