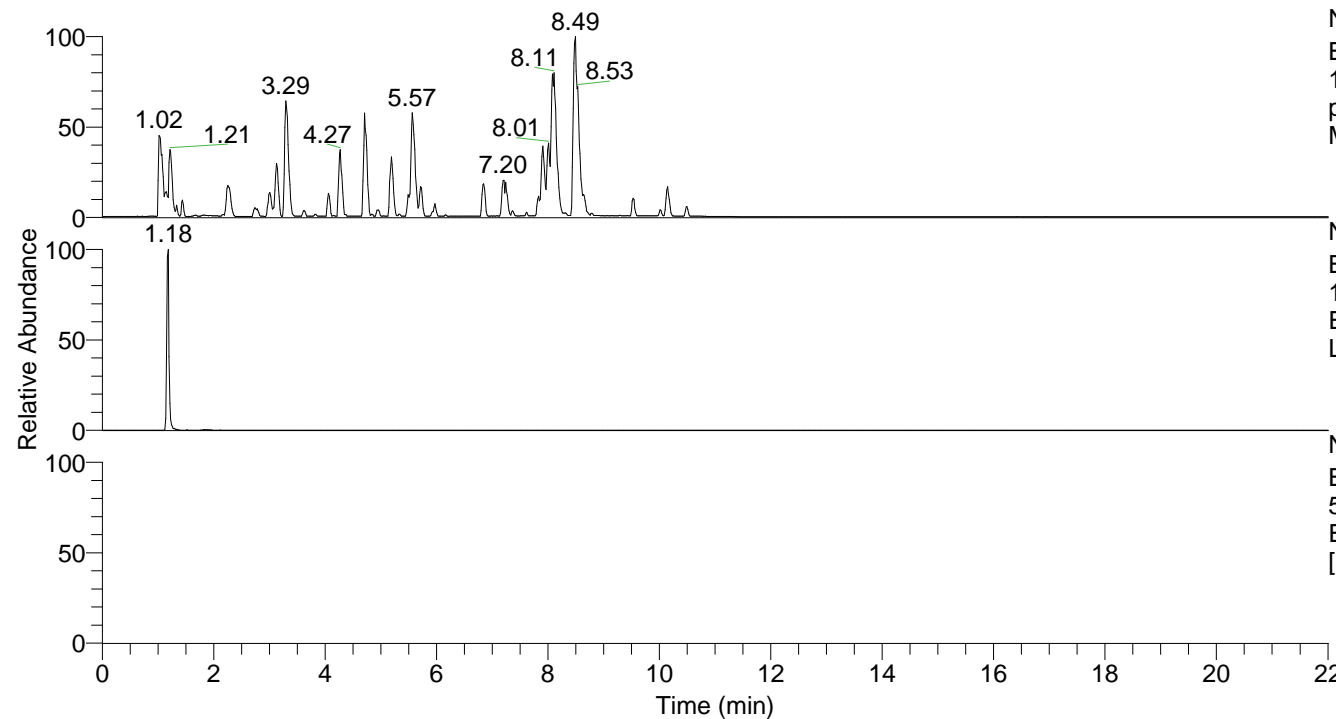


RT: 0.00 - 22.01



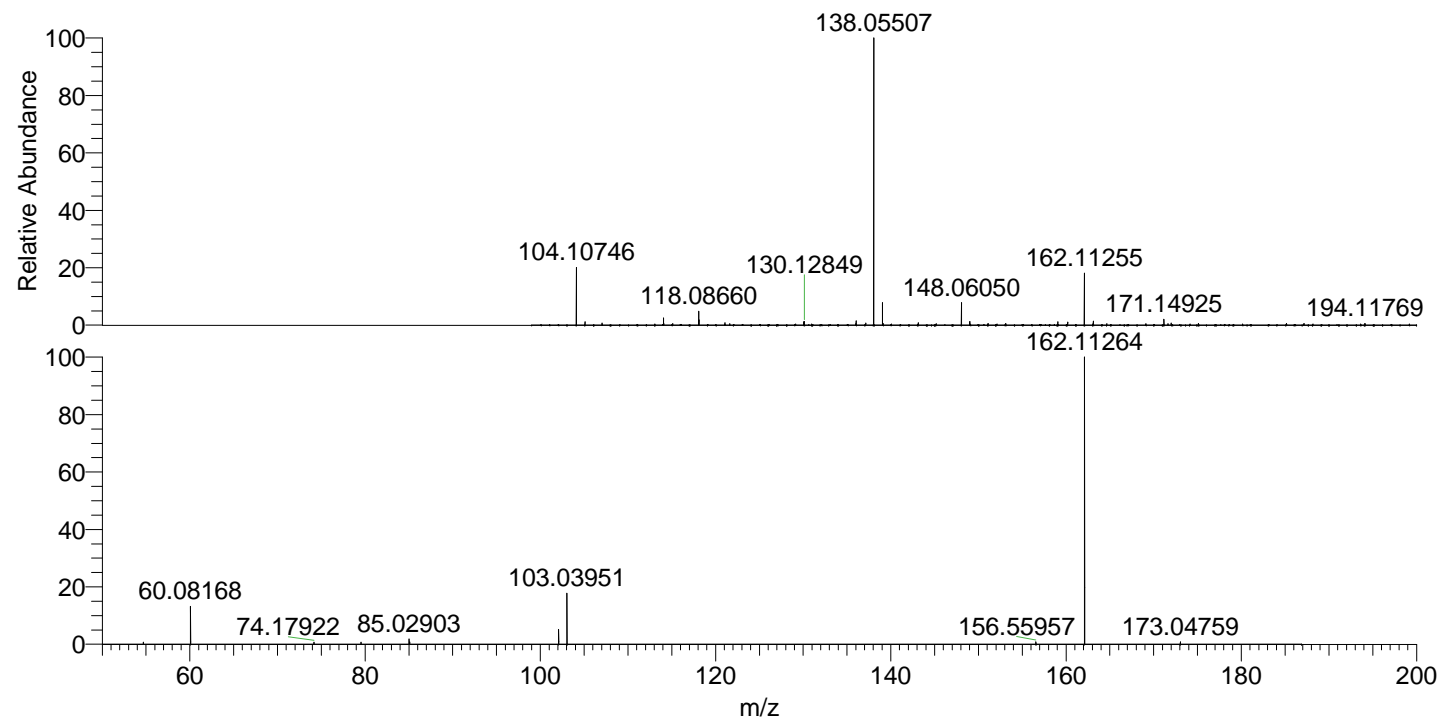
NL: 6.76E7
 Base Peak m/z=
 100.00000-1500.00000 F: FTMS +
 p ESI Full ms [100.00-1500.00]
 MS Lcornutus

NL: 1.44E6
 Base Peak m/z=
 162.11220-162.11382 F: FTMS + p
 ESI Full ms [100.00-1500.00] MS
 Lcornutus

NL: 3.08E5
 Base Peak m/z=
 50.00000-1500.00000 F: FTMS + p
 ESI d Full ms2 162.11@hcd35.00
 [50.00-185.00] MS Lcornutus

Lcornutus#480 RT: 1.19
 F: FTMS + p ESI d Full ms2 162.11 ...
 m/z= 50.00000-1000.00000

m/z	Intensity	Relative
54.69145	2253.4	0.73
60.08168	42271.2	13.71
74.17922	2106.5	0.68
79.52935	2199.4	0.71
85.02903	5765.0	1.87
85.09402	2553.4	0.83
102.09188	16132.7	5.23
103.03951	54508.0	17.67
156.55957	2742.0	0.89
162.11264	308409.3	100.00
173.04759	2398.2	0.78



NL: 7.44E6
 Lcornutus#475 RT:
 1.18 AV: 1 T: FTMS +
 p ESI Full lock ms
 [100.00-1500.00]

NL: 3.05E5
 Lcornutus#480 RT:
 1.19 AV: 1 F: FTMS +
 p ESI d Full ms2
 162.11@hcd35.00
 [50.00-185.00]