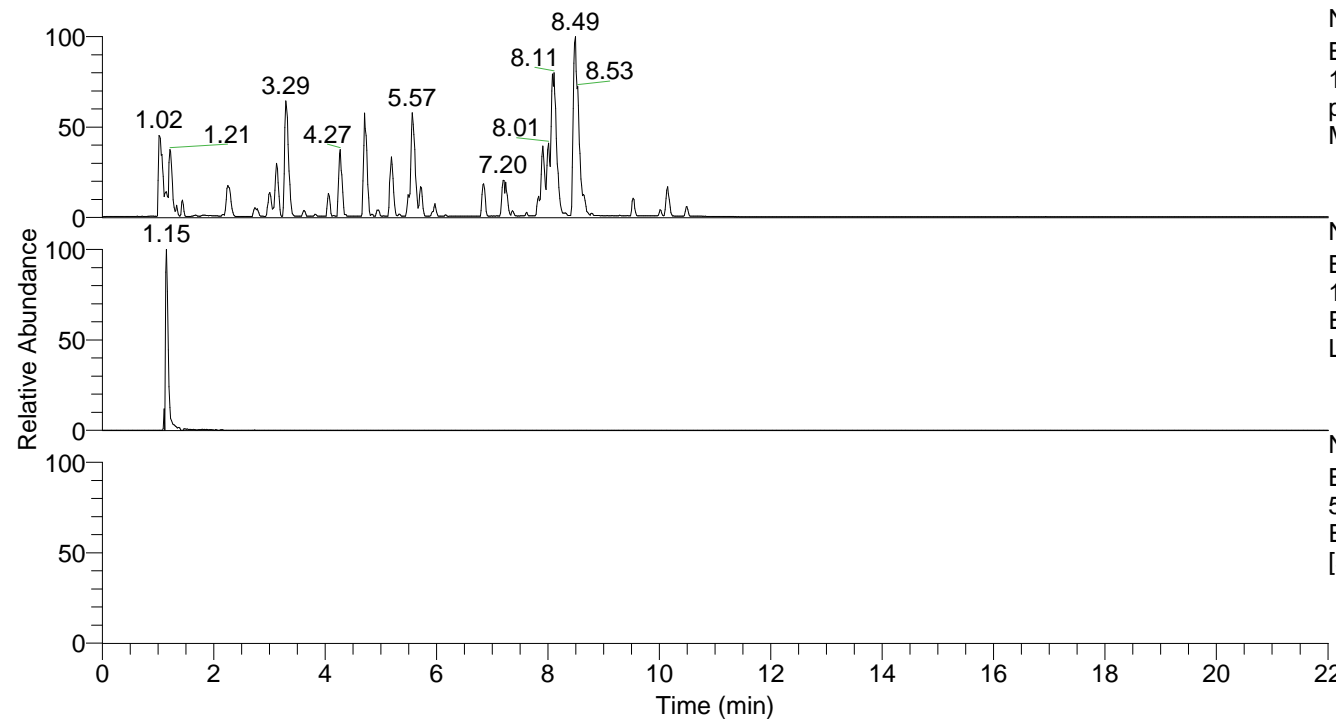


RT: 0.00 - 22.01



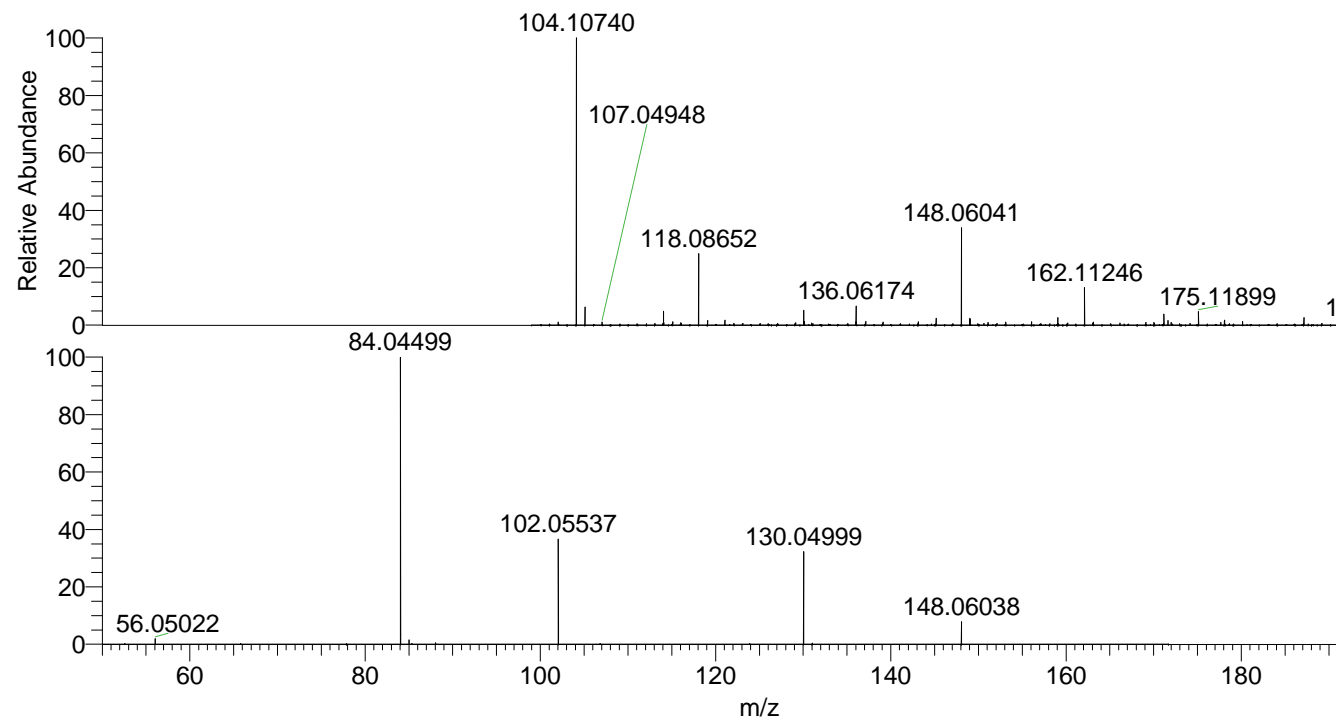
NL: 6.76E7
 Base Peak m/z=
 100.00000-1500.00000 F: FTMS +
 p ESI Full ms [100.00-1500.00]
 MS Lcornutus

NL: 1.32E6
 Base Peak m/z=
 148.06024-148.06172 F: FTMS + p
 ESI Full ms [100.00-1500.00] MS
 Lcornutus

NL: 8.01E5
 Base Peak m/z=
 50.00000-1500.00000 F: FTMS + p
 ESI d Full ms2 148.06@hcd35.00
 [50.00-170.00] MS Lcornutus

Lcornutus#462 RT: 1.15
 F: FTMS + p ESI d Full ms2 148.06 ...
 m/z= 50.00000-1000.00000

m/z	Intensity	Relative
56.05022	15313.1	1.91
84.04499	801332.3	100.00
85.02892	11825.7	1.48
102.05537	289689.6	36.15
130.04999	261241.0	32.60
148.06038	62018.0	7.74



NL: 3.87E6
 Lcornutus#463 RT:
 1.15 AV: 1 T: FTMS +
 p ESI Full lock ms
 [100.00-1500.00]

NL: 7.88E5
 Lcornutus#462 RT:
 1.15 AV: 1 F: FTMS +
 p ESI d Full ms2
 148.06@hcd35.00
 [50.00-170.00]