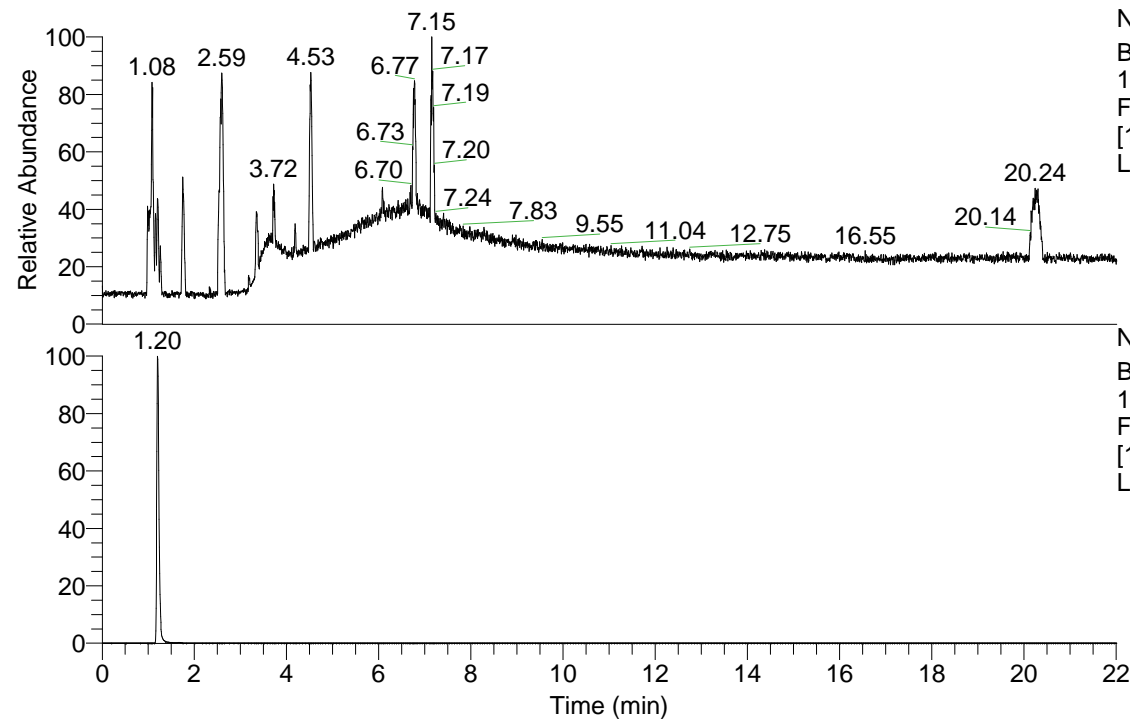


RT: 0.00 - 22.01



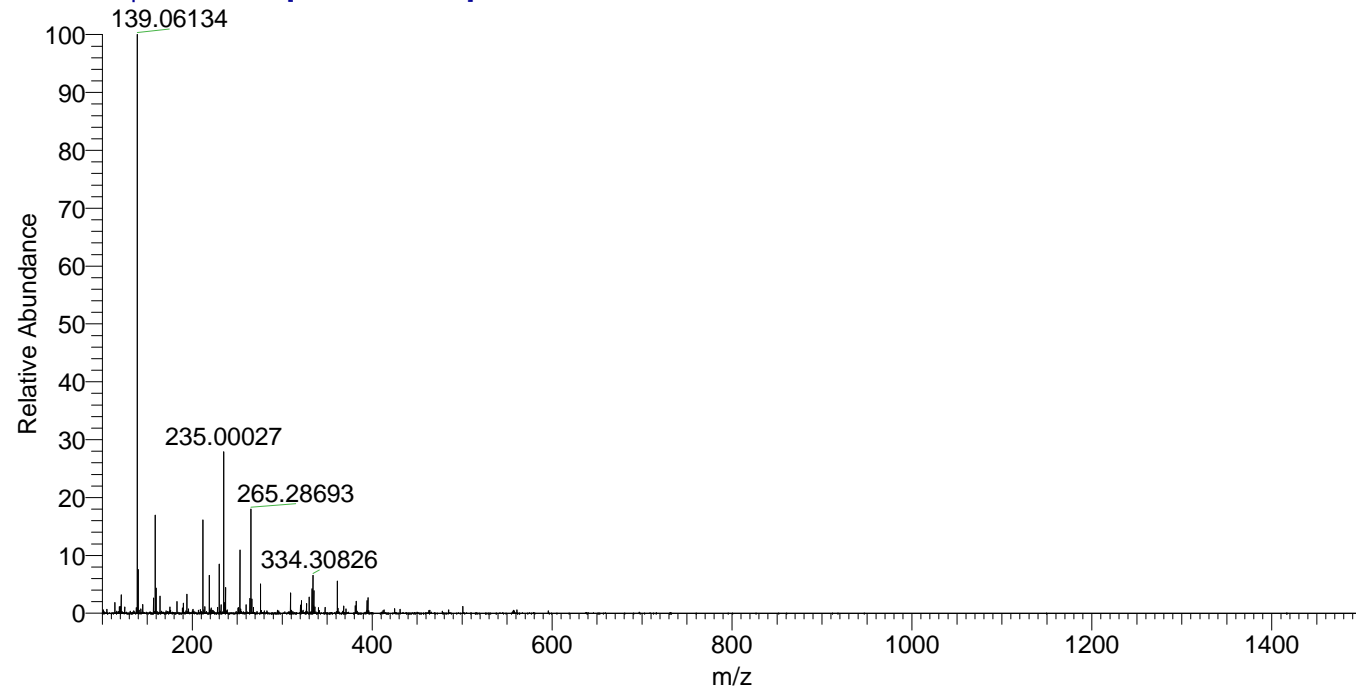
NL: 6.93E7
Base Peak m/z=
100.00000-1500.00000
F: FTMS + p ESI Full ms
[100.00-1500.00] MS
Lcornutus_HDX

Lcornutus_HDX#183 RT: 1.20
T: FTMS + p ESI Full ms [100.00-1500.00]

m/z= 139.00000-140.00000

m/z	Intensity	Relative	Delta (ppm)	Composition
139.06134	30362140.0	100.00	0.78	C ₇ H ₇ ² H O ₂ N

Lcornutus_HDX #183 RT: 1.20 AV: 1 NL: 2.99E7
T: FTMS + p ESI Full ms [100.00-1500.00]



NL: 3.04E7
Base Peak m/z=
139.06108-139.06248 F:
FTMS + p ESI Full ms
[100.00-1500.00] MS
Lcornutus_HDX

Lcornutus_HDX #183 RT: 1.20 AV: 1 NL: 2.99E7
T: FTMS + p ESI Full ms [100.00-1500.00]

