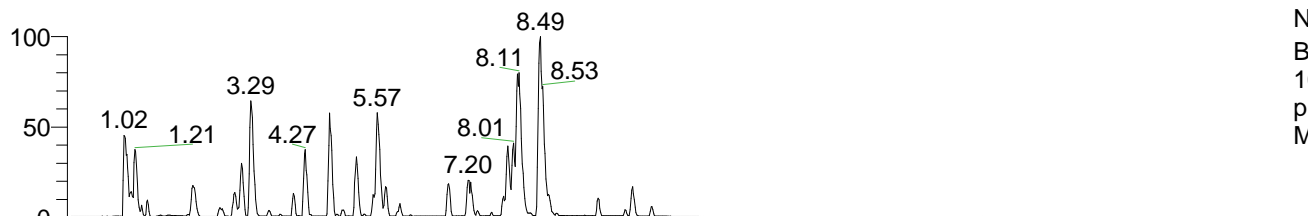


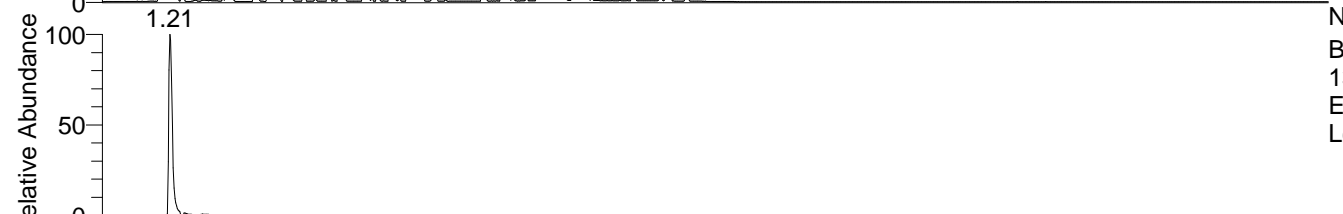
RT: 0.00 - 22.01



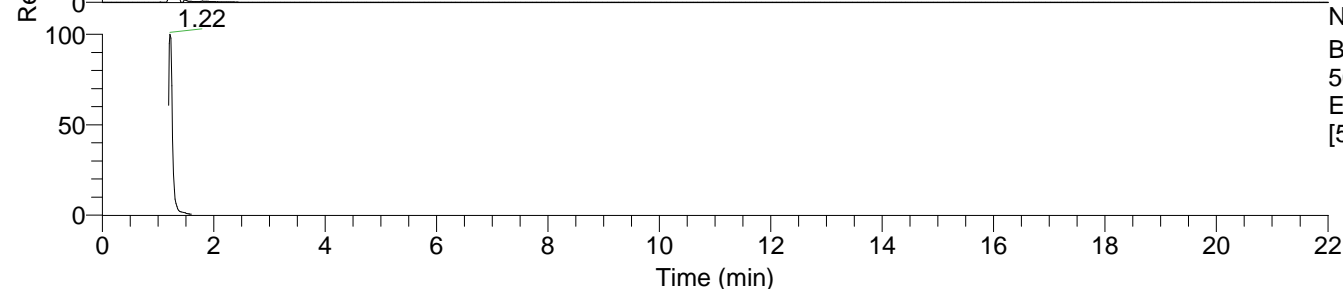
NL: 6.76E7
 Base Peak m/z=
 100.00000-1500.00000 F: FTMS +
 p ESI Full ms [100.00-1500.00]
 MS Lcornutus

Lcornutus#478-506 RT: 1.19-1.26 AV: 6
 F: FTMS + p ESI d Full ms2 138.05@hc ...
 m/z= 50.00000-1000.00000

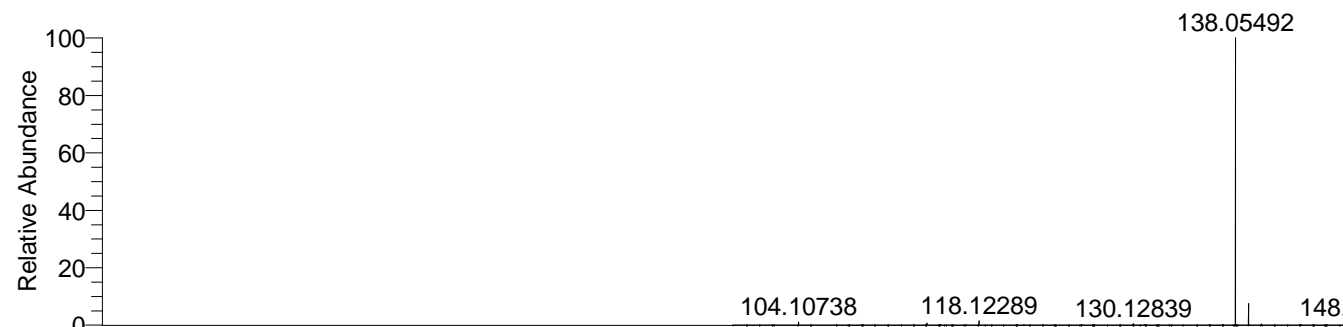
m/z	Intensity	Relative
94.06562	494145.4	4.05
96.04495	706024.4	5.79
124.03951	367041.8	3.01
138.05492	12195175.0	100.00



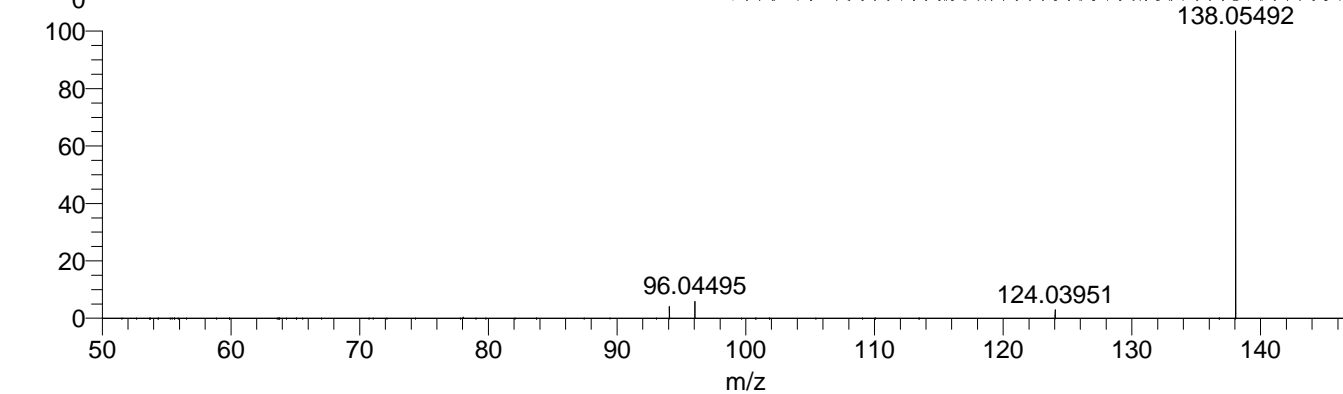
NL: 2.54E7
 Base Peak m/z=
 138.05481-138.05619 F: FTMS + p
 ESI Full ms [100.00-1500.00] MS
 Lcornutus



NL: 1.67E7
 Base Peak m/z=
 50.00000-1500.00000 F: FTMS + p
 ESI d Full ms2 138.05@hcd35.00
 [50.00-160.00] MS Lcornutus



NL: 2.54E7
 Lcornutus#487 RT: 1.21
 AV: 1 T: FTMS + p ESI
 Full lock ms
 [100.00-1500.00]



NL: 1.19E7
 Lcornutus#477-510 RT:
 1.19-1.26 AV: 6 F: FTMS
 + p ESI d Full ms2
 138.05@hcd35.00
 [50.00-160.00]