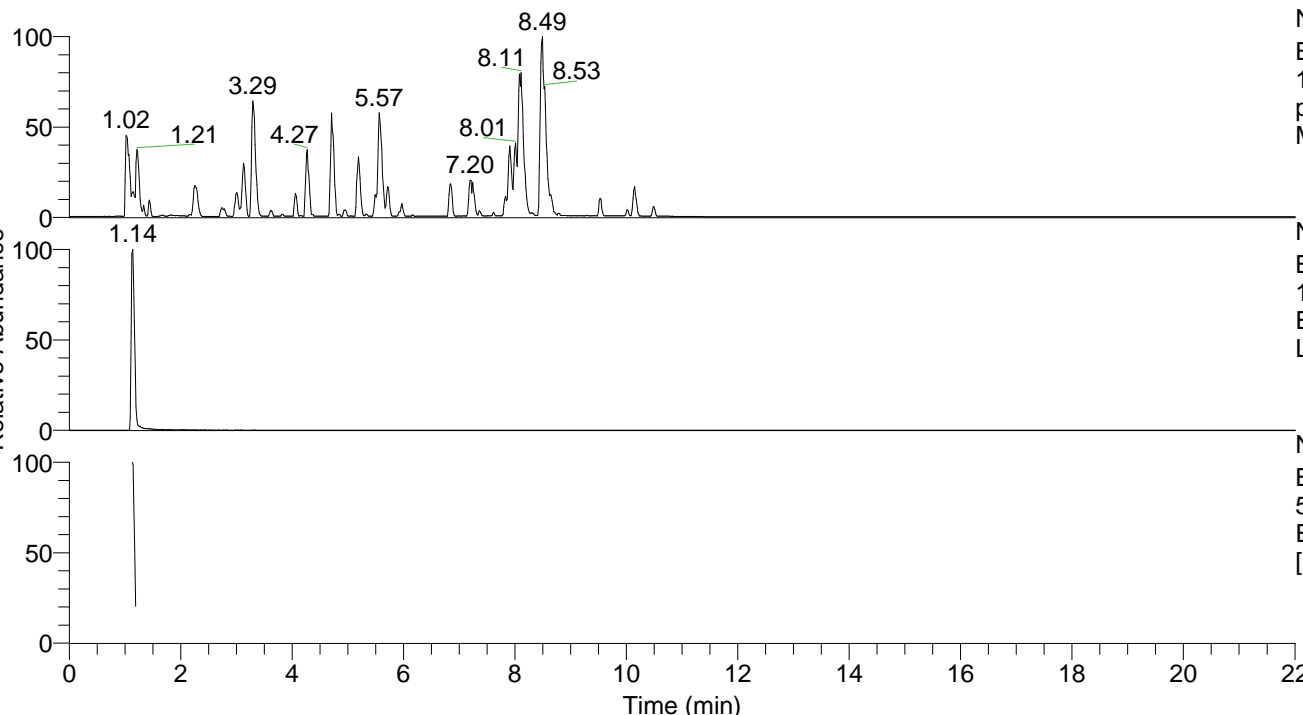


RT: 0.00 - 22.01



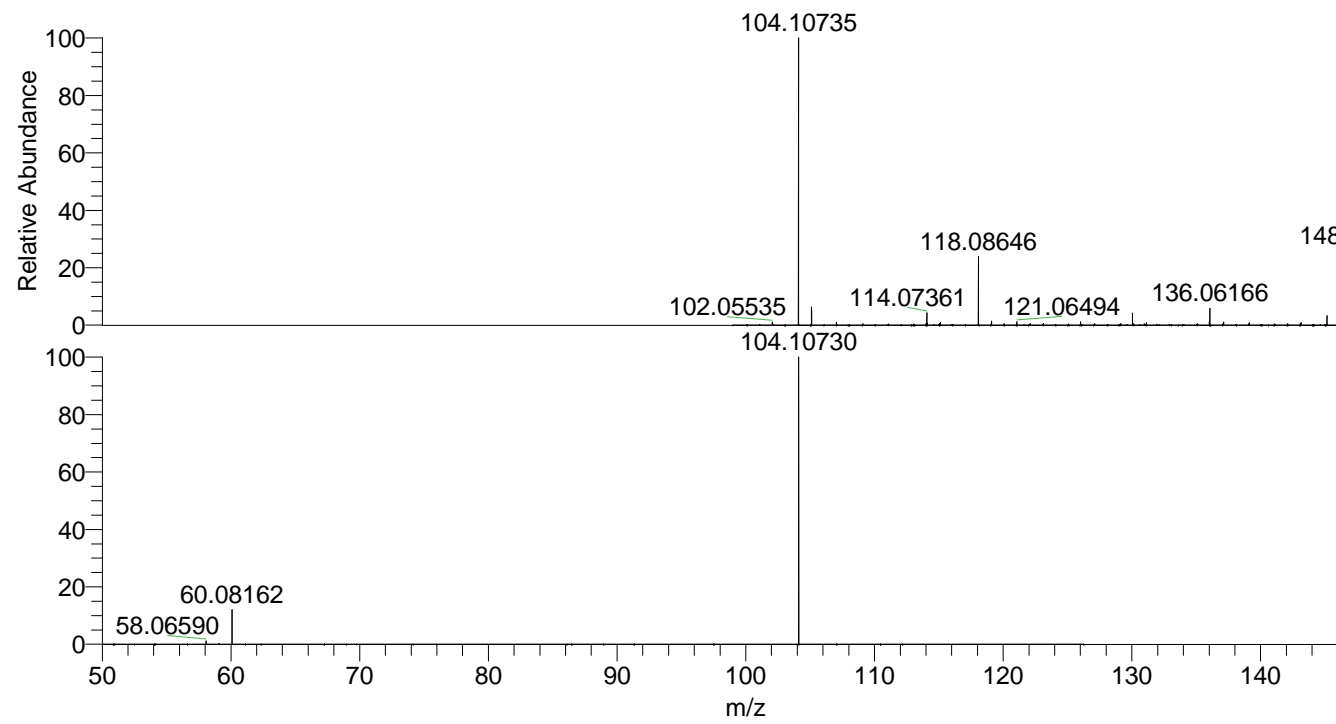
NL: 6.76E7  
 Base Peak m/z=  
 100.00000-1500.00000 F: FTMS +  
 p ESI Full ms [100.00-1500.00]  
 MS Lcornutus

NL: 4.47E6  
 Base Peak m/z=  
 104.10701-104.10805 F: FTMS + p  
 ESI Full ms [100.00-1500.00] MS  
 Lcornutus

NL: 9.65E6  
 Base Peak m/z=  
 50.00000-1500.00000 F: FTMS + p  
 ESI d Full ms2 104.11@hcd35.00  
 [50.00-125.00] MS Lcornutus

Lcornutus#459-471 RT: 1.15-1.18 AV: 3  
 F: FTMS + p ESI d Full ms2 104.11@h ...  
 m/z= 50.00000-1000.00000

m/z	Intensity	Relative
58.06590	76338.8	1.11
60.08162	820356.8	11.97
104.10730	6851777.5	100.00



NL: 4.47E6  
 Lcornutus#457 RT: 1.14  
 AV: 1 T: FTMS + p ESI  
 Full lock ms  
 [100.00-1500.00]

NL: 6.68E6  
 Lcornutus#457-474 RT:  
 1.15-1.18 AV: 3 F: FTMS  
 + p ESI d Full ms2  
 104.11@hcd35.00  
 [50.00-125.00]