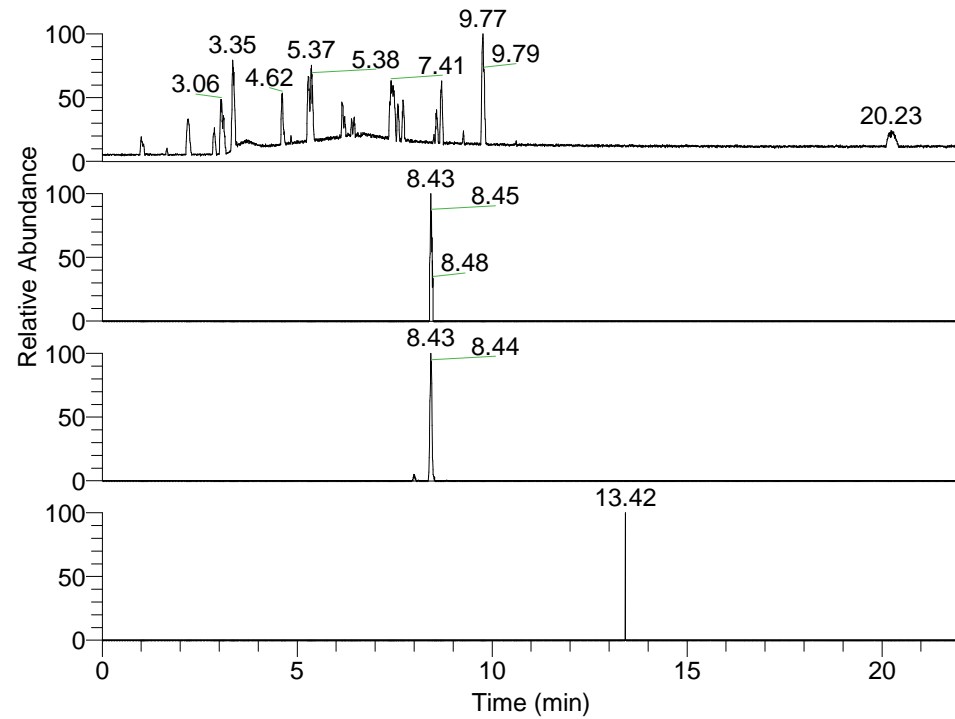


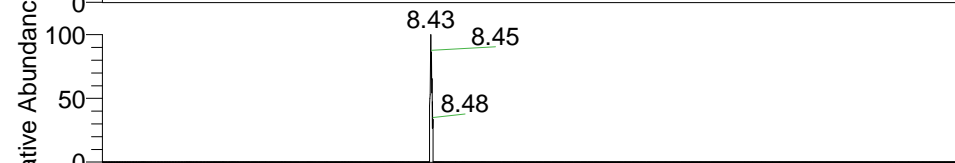
RT: 0.00 - 22.01



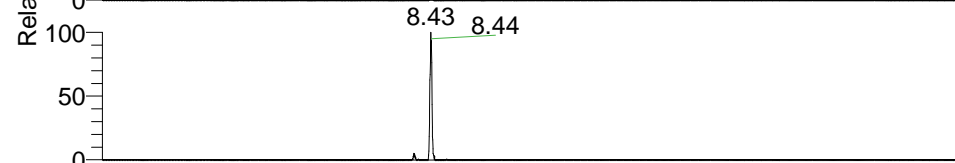
NL: 1.37E8
 Base Peak m/z=
 100.00000-1500.00000 F: FTMS + p
 ESI Full ms [100.00-1500.00] MS
 Hololenasp_HDX

Hololenasp_HDX#1362 RT: 8.43
 T: FTMS + p ESI Full ms [100.00-1500.00]
 m/z= 552.00000-553.00000

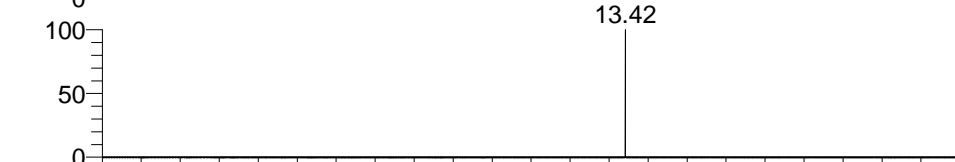
m/z	Intensity	Relative	Delta (ppm)	Composition
552.48627	24184.0	100.00	-0.71	C ₃₀ H ₅₀ 2H ₆ O ₂ N ₇
			2.09	C ₃₀ H ₄₈ 2H ₇ O ₂ N ₇
			-3.52	C ₃₀ H ₅₂ 2H ₅ O ₂ N ₇
			4.89	C ₃₀ H ₄₆ 2H ₈ O ₂ N ₇



NL: 2.42E4
 Base Peak m/z= 552.48445-552.48997
 F: FTMS + p ESI Full ms
 [100.00-1500.00] MS Hololenasp_HDX

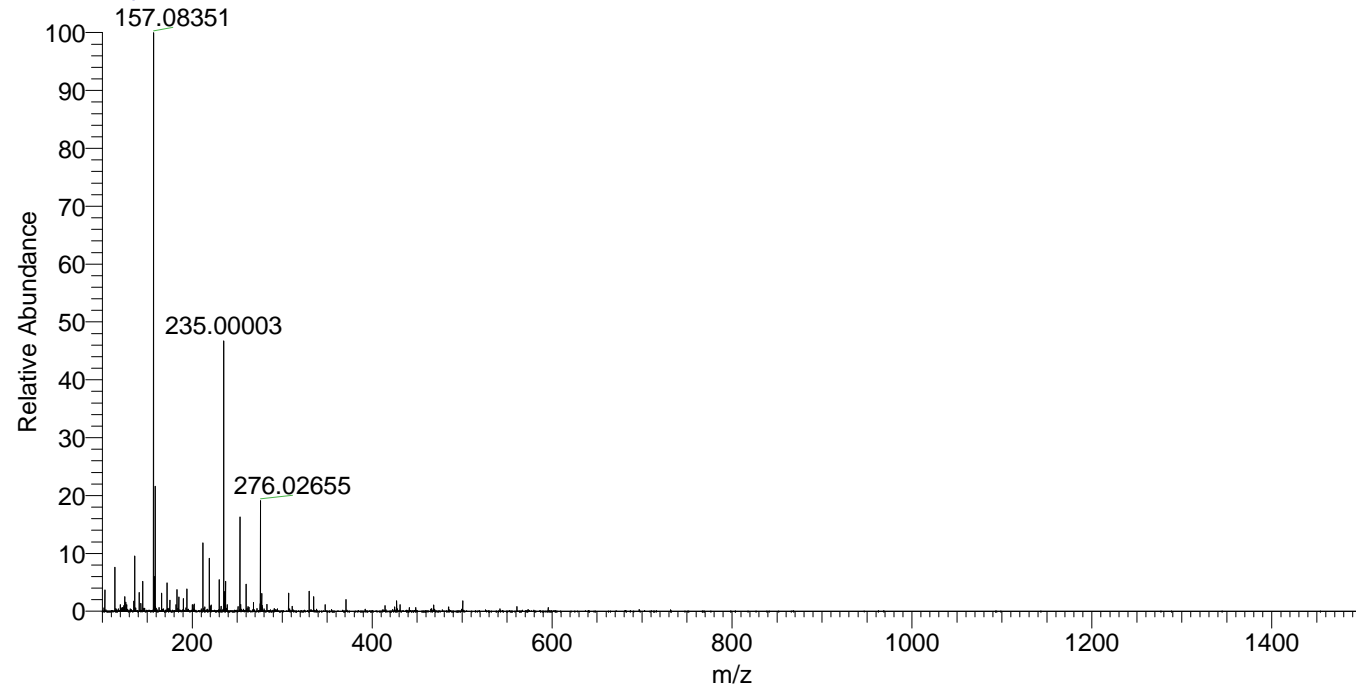


NL: 6.71E5
 Base Peak m/z= 277.24927-277.25205
 F: FTMS + p ESI Full ms
 [100.00-1500.00] MS Hololenasp_HDX



NL: 2.76E3
 Base Peak m/z= 667.48301-667.48969
 F: FTMS + p ESI Full ms
 [100.00-1500.00] MS Hololenasp_HDX

Hololenasp_HDX #1362 RT: 8.43 AV: 1 NL: 2.09E7
 T: FTMS + p ESI Full ms [100.00-1500.00]



Hololenasp_HDX #1362 RT: 8.43 AV: 1 NL: 1.73E5
 T: FTMS + p ESI Full ms [100.00-1500.00]

