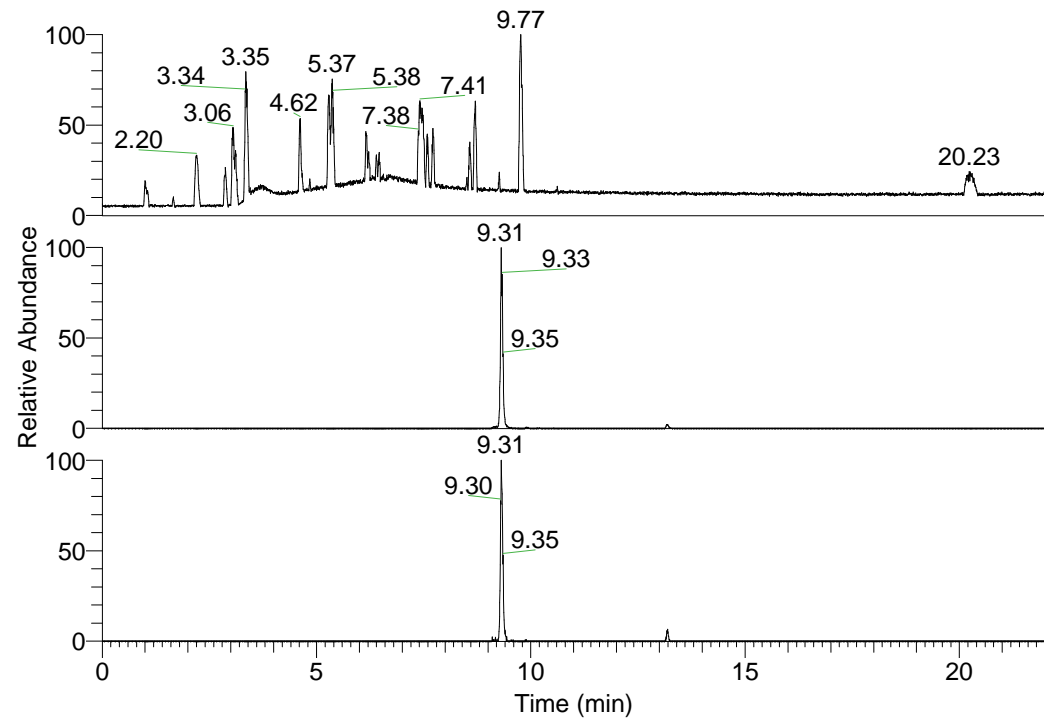


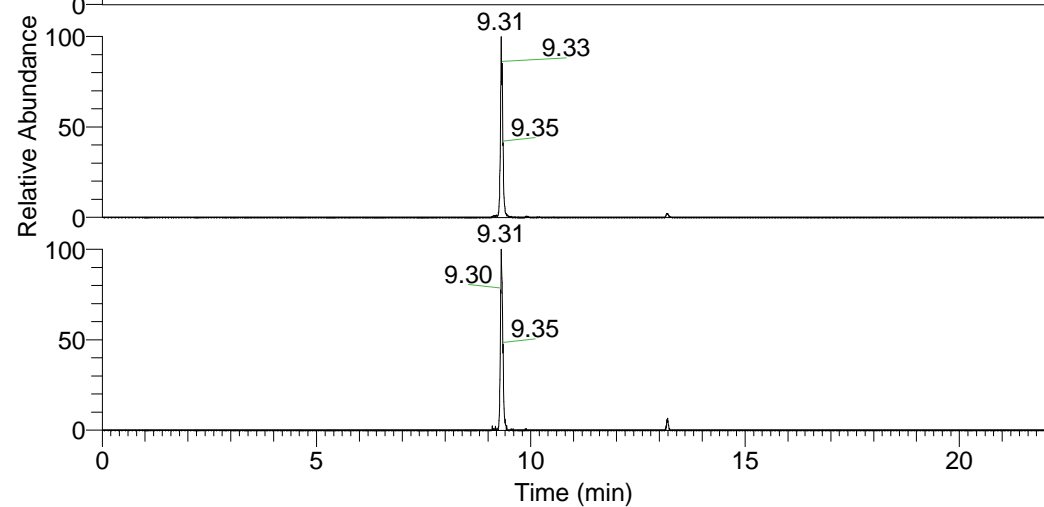
RT: 0.00 - 22.01



NL: 1.37E8
 Base Peak m/z=
 100.00000-1500.00000 F:
 FTMS + p ESI Full ms
 [100.00-1500.00] MS
 Hololenasp_HDX

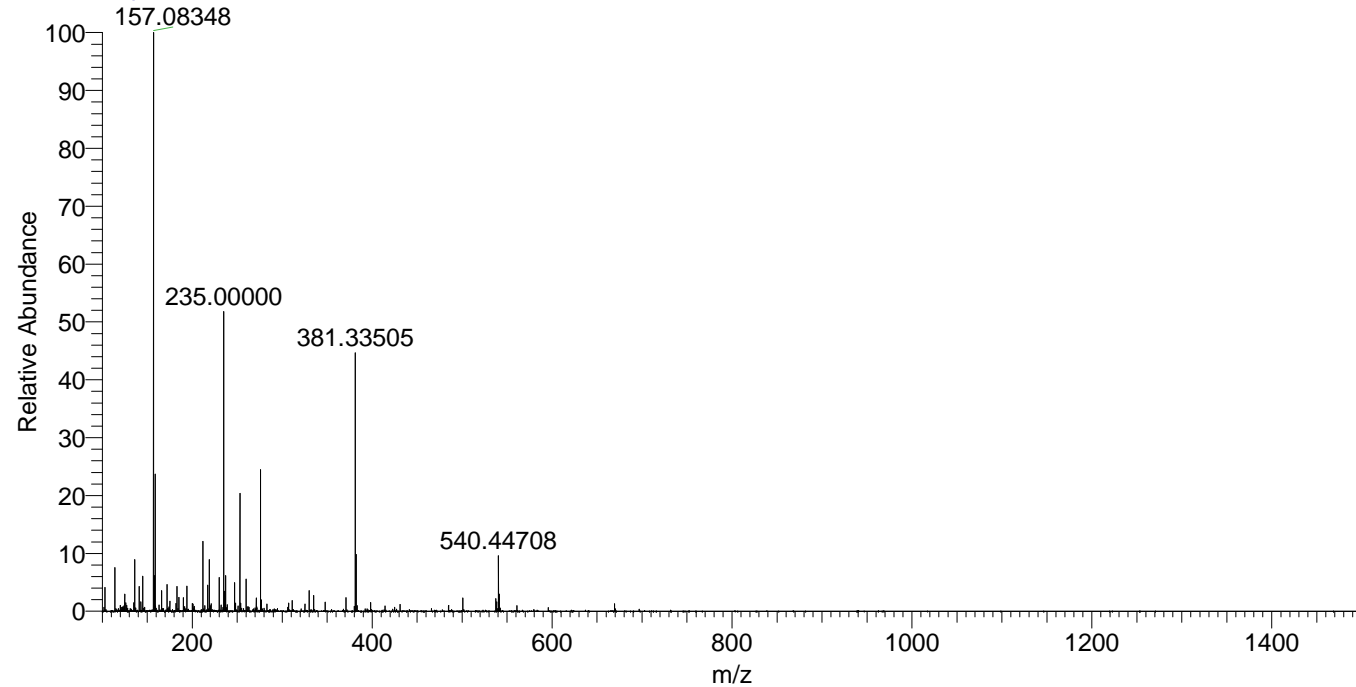
Hololenasp_HDX#1510 RT: 9.31
 T: FTMS + p ESI Full ms [100.00-1500.00]
 m/z= 540.00000-541.00000

m/z	Intensity	Relative	Delta (ppm)	Composition
540.44708	1839642.8	100.00	-0.18	C ₂₈ H ₄₂ ² H ₈ O ₃ N ₇
			2.69	C ₂₈ H ₄₀ ² H ₉ O ₃ N ₇
			-3.04	C ₂₈ H ₄₄ ² H ₇ O ₃ N ₇



NL: 1.84E6
 Base Peak m/z=
 540.44503-540.45043 F: FTMS
 + p ESI Full ms
 [100.00-1500.00] MS
 Hololenasp_HDX

Hololenasp_HDX #1510 RT: 9.31 AV: 1 NL: 1.92E7
 T: FTMS + p ESI Full ms [100.00-1500.00]



Hololenasp_HDX #1510 RT: 9.31 AV: 1 NL: 1.84E6
 T: FTMS + p ESI Full ms [100.00-1500.00]

