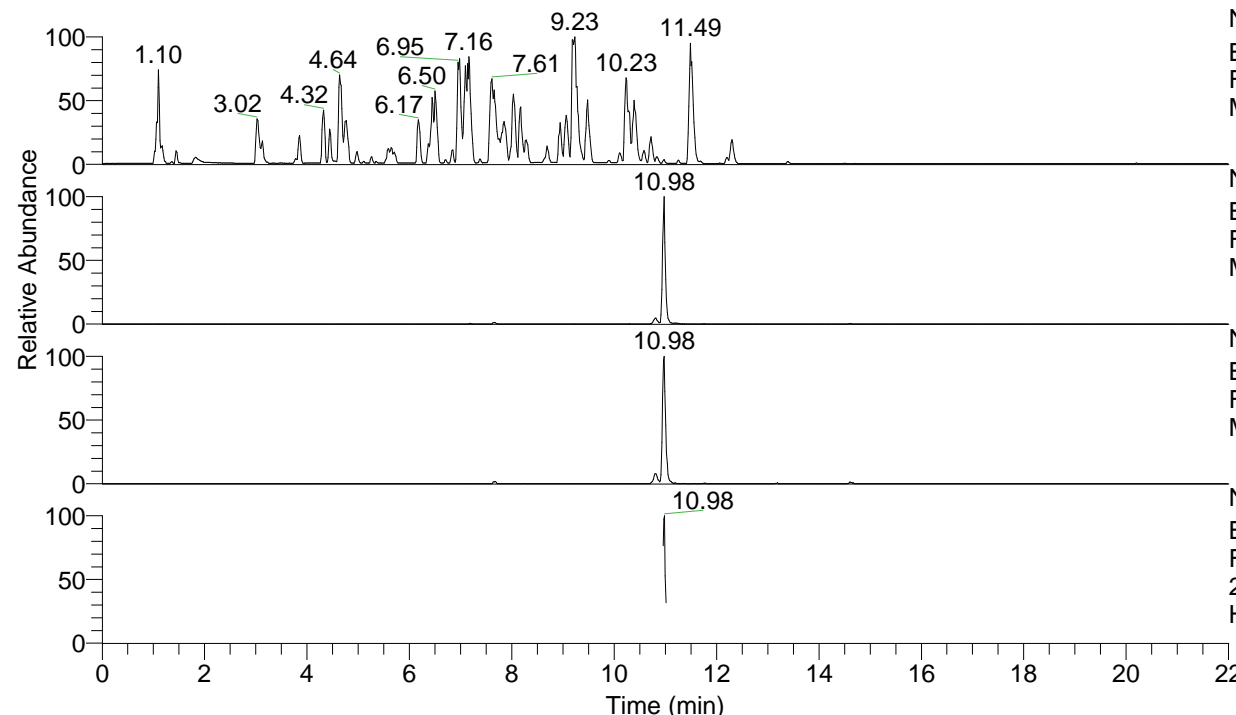


RT: 0.00 - 22.00



NL: 4.98E7
 Base Peak m/z= 100.00000-1500.00000 F:
 FTMS + p ESI Full ms [100.00-1500.00]
 MS Hololenasp

NL: 1.99E6
 Base Peak m/z= 532.39485-532.40017 F:
 FTMS + p ESI Full ms [100.00-1500.00]
 MS Hololenasp

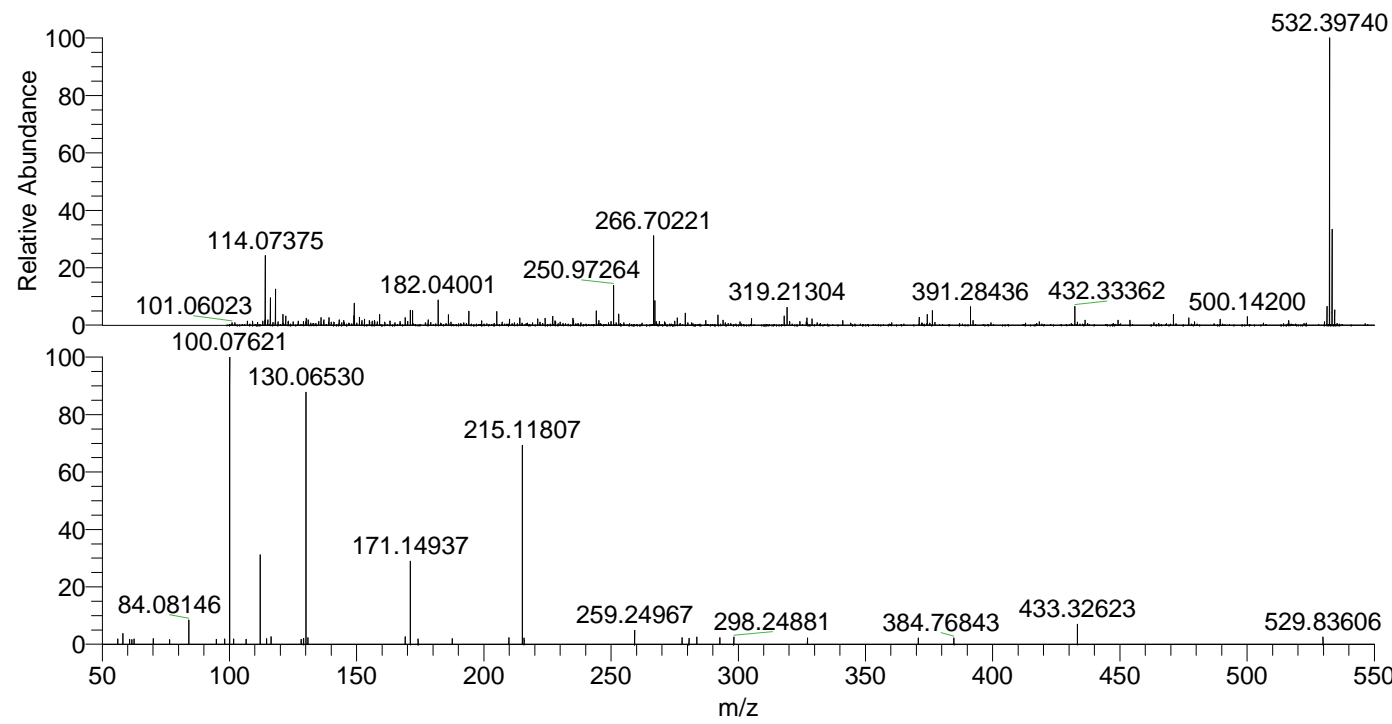
NL: 6.10E5
 Base Peak m/z= 266.70134-266.70400 F:
 FTMS + p ESI Full ms [100.00-1500.00]
 MS Hololenasp

NL: 6.48E4
 Base Peak m/z= 50.00000-1500.00000 F:
 FTMS + p ESI d Full ms2
 266.70@hcd35.00 [50.00-560.00] MS
 Hololenasp

Hololenasp#4396-4407 RT: 10.97-11.00

F: FTMS + p ESI d Full ms2 266.70 ...

| m/z | Intensity | Relative |
|-----------|-----------|----------|
| 56.05624 | 921.1 | 1.83 |
| 58.06606 | 1880.1 | 3.73 |
| 60.71133 | 859.2 | 1.70 |
| 61.64563 | 836.6 | 1.66 |
| 62.53200 | 935.3 | 1.86 |
| 70.06605 | 983.8 | 1.95 |
| 76.46543 | 826.8 | 1.64 |
| 84.08146 | 4194.6 | 8.32 |
| 94.89908 | 869.0 | 1.72 |
| 98.09708 | 971.8 | 1.93 |
| 100.07621 | 50411.3 | 100.00 |
| 101.67042 | 921.6 | 1.83 |
| 106.50923 | 900.3 | 1.79 |
| 112.11264 | 15824.3 | 31.39 |
| 114.64092 | 1034.2 | 2.05 |
| 116.32511 | 1309.0 | 2.60 |
| 128.17257 | 866.6 | 1.72 |
| 129.13877 | 1056.5 | 2.10 |
| 130.06530 | 44391.2 | 88.06 |
| 130.80005 | 1122.5 | 2.23 |
| 169.13272 | 1301.5 | 2.58 |
| 171.14937 | 14488.8 | 28.74 |
| 174.17655 | 950.2 | 1.88 |
| 187.55700 | 958.7 | 1.90 |
| 209.88653 | 1146.5 | 2.27 |
| 215.11807 | 35920.6 | 71.26 |
| 215.82575 | 1102.8 | 2.19 |
| 259.24967 | 2511.3 | 4.98 |
| 277.92711 | 1153.1 | 2.29 |
| 280.63563 | 1051.6 | 2.09 |
| 283.71306 | 1284.1 | 2.55 |
| 292.77152 | 1162.2 | 2.31 |
| 298.24881 | 1250.5 | 2.48 |
| 327.20825 | 1094.2 | 2.17 |
| 370.76569 | 1096.3 | 2.17 |
| 384.76843 | 1113.9 | 2.21 |
| 433.32623 | 3571.8 | 7.09 |
| 529.83606 | 1243.0 | 2.47 |



NL: 1.91E6
 Hololenasp#4399 RT:
 10.98 AV: 1 T: FTMS + p
 ESI Full lock ms
 [100.00-1500.00]

NL: 5.01E4
 Hololenasp#4391-4411
 RT: 10.97-11.00 AV: 3 F:
 FTMS + p ESI d Full ms2
 266.70@hcd35.00
 [50.00-560.00]