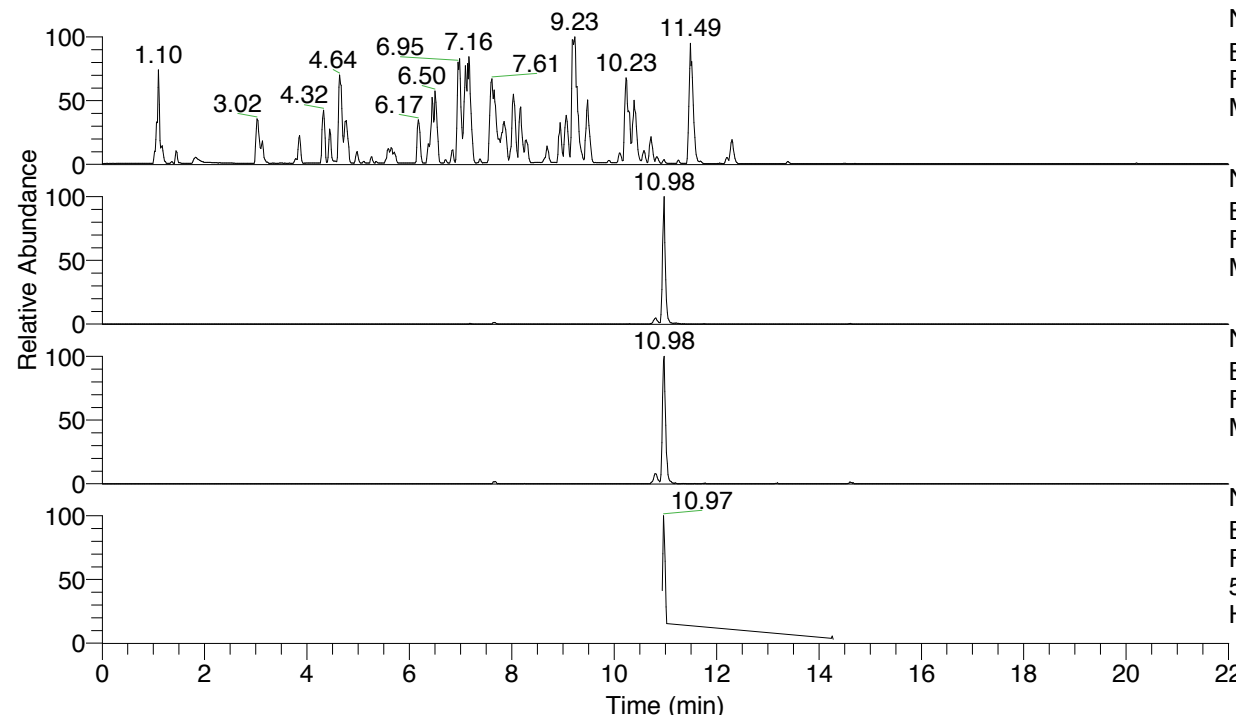


RT: 0.00 - 22.00



NL: 4.98E7
 Base Peak m/z= 100.00000-1500.00000 F:
 FTMS + p ESI Full ms [100.00-1500.00]
 MS Hololenasp

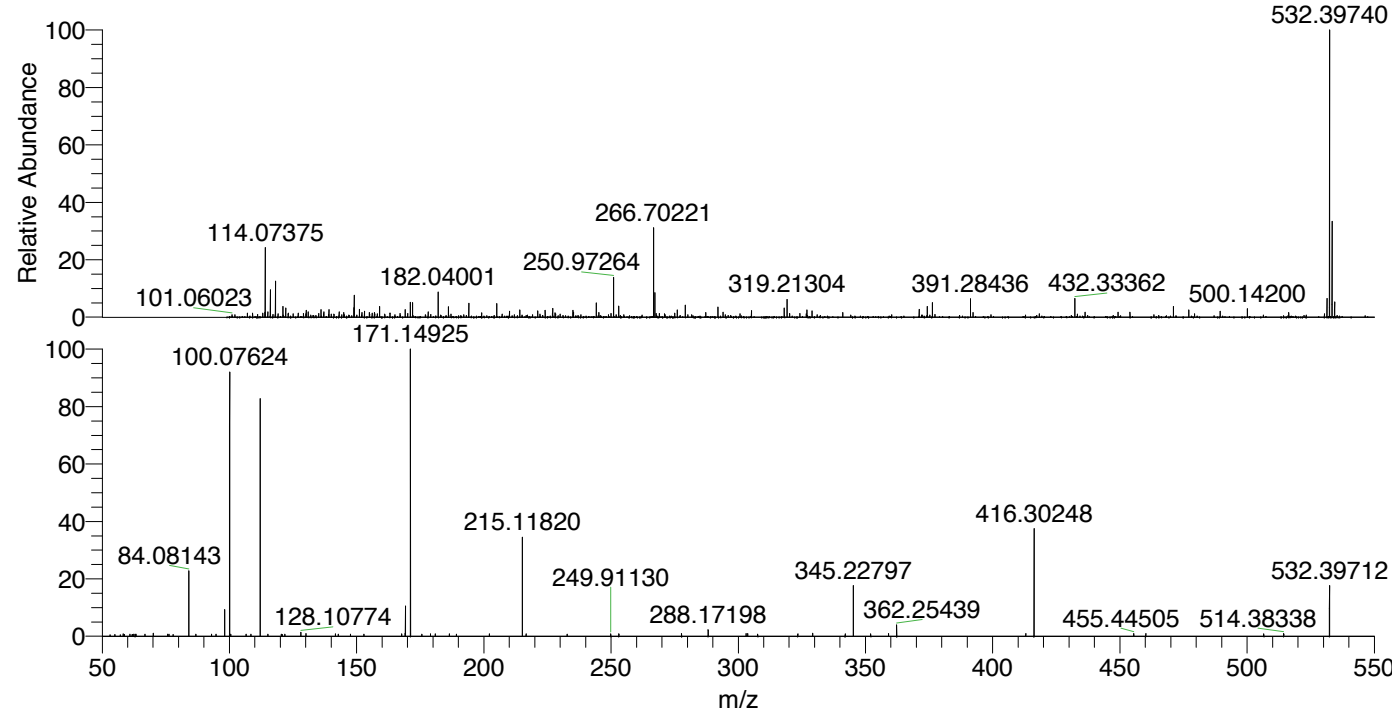
NL: 1.99E6
 Base Peak m/z= 532.39485-532.40017 F:
 FTMS + p ESI Full ms [100.00-1500.00]
 MS Hololenasp

NL: 6.10E5
 Base Peak m/z= 266.70134-266.70400 F:
 FTMS + p ESI Full ms [100.00-1500.00]
 MS Hololenasp

NL: 1.82E5
 Base Peak m/z= 50.00000-1500.00000 F:
 FTMS + p ESI d Full ms2
 532.31@hcd35.00 [50.00-560.00] MS
 Hololenasp

Hololenasp#4384-4412 RT: 10.94-11.01
 F: FTMS + p ESI d Full ms2 532.31 ...
 m/z= 50.00000-1000.00000

m/z	Intensity	Relative
58.23889	815.9	0.75
70.06561	1079.2	0.99
77.99698	772.0	0.71
84.08142	24031.7	22.16
86.75437	774.4	0.71
94.69275	791.8	0.73
98.09714	9455.4	8.72
100.07624	99345.5	91.59
108.39655	756.9	0.70
112.11255	87662.0	80.82
112.12007	1195.0	1.10
115.12318	780.6	0.72
120.35128	756.4	0.70
121.73636	788.1	0.73
128.10775	1488.5	1.37
130.06618	993.2	0.92
132.19591	758.0	0.70
141.61166	891.4	0.82
167.74636	878.4	0.81
169.13336	1097.9	1.01
169.16997	10648.9	9.82
171.14927	108464.6	100.00
175.67759	772.0	0.71
178.98972	806.2	0.74
180.90279	862.4	0.80
186.44030	839.0	0.77
202.19278	871.5	0.80
215.11823	36640.1	33.78
216.60176	851.0	0.78
232.76676	776.3	0.72
249.91132	885.0	0.82
253.06889	830.7	0.77
272.70582	916.5	0.84
277.71341	913.2	0.84
288.17198	2257.9	2.08
288.64323	918.6	0.85
303.11815	913.3	0.84
303.70211	937.1	0.86
307.64839	749.6	0.69
323.40656	818.4	0.75
329.23383	1072.4	0.99
342.04975	867.4	0.80
345.22789	17557.2	16.19
352.05203	829.1	0.76
359.07204	904.3	0.83
362.25507	4062.1	3.75
390.21821	832.9	0.77
413.02803	991.0	0.91
416.30252	39783.5	36.68
454.44654	873.7	0.81
455.44503	994.2	0.92
460.19736	895.4	0.83
506.53697	808.9	0.75
514.38346	1004.7	0.93
532.39709	17899.5	16.50



NL: 1.91E6
 Hololenasp#4399 RT:
 10.98 AV: 1 T: FTMS + p
 ESI Full lock ms
 [100.00-1500.00]

NL: 1.21E5
 Hololenasp#4383-4410
 RT: 10.94-11.00 AV: 5 F:
 FTMS + p ESI d Full ms2
 532.31@hcd35.00
 [50.00-560.00]

Hololenasp#4384-4412 RT: 10.94-11.01 AV: 6

F: FTMS + p ESI d Full ms2 532.31@hcd35.00 [50.00-560.00]

m/z= 50.00000-1000.00000

m/z	Intensity	Relative
53.21893	554.3	0.51
53.43435	591.5	0.55
55.00377	601.8	0.55
56.25503	611.9	0.56
58.23889	815.9	0.75
58.69764	671.3	0.62
60.87420	718.5	0.66
61.75407	623.2	0.57
61.91128	657.5	0.61
62.36304	683.9	0.63
62.95932	719.0	0.66
63.28070	743.5	0.69
66.81976	737.0	0.68
66.83660	667.5	0.62
70.06561	1079.2	0.99
73.36959	636.1	0.59
75.72530	727.1	0.67
76.23772	662.8	0.61
76.26549	686.3	0.63
77.87236	607.8	0.56
77.99698	772.0	0.71
78.05248	702.7	0.65
81.37719	697.6	0.64
84.08142	24031.7	22.16
86.75437	774.4	0.71
92.95524	691.8	0.64
94.69275	791.8	0.73
98.09714	9455.4	8.72
100.07624	99345.5	91.59
100.51534	745.4	0.69
106.55507	701.1	0.65
108.39655	756.9	0.70
112.11255	87662.0	80.82
112.12007	1195.0	1.10
115.12318	780.6	0.72
120.35128	756.4	0.70
120.79438	681.6	0.63
121.73636	788.1	0.73
128.10775	1488.5	1.37

Hololenasp#4384-4412 RT: 10.94-11.01 AV: 6

F: FTMS + p ESI d Full ms2 532.31@hcd35.00 [50.00-560.00]

m/z= 50.00000-1000.00000

m/z	Intensity	Relative
130.06618	993.2	0.92
132.19591	758.0	0.70
141.61166	891.4	0.82
142.79810	705.0	0.65
147.60975	745.3	0.69
152.88500	720.3	0.66
167.74636	878.4	0.81
169.13336	1097.9	1.01
169.16997	10648.9	9.82
171.14927	108464.6	100.00
175.67759	772.0	0.71
178.98972	806.2	0.74
180.90279	862.4	0.80
186.44030	839.0	0.77
189.25254	692.7	0.64
202.19278	871.5	0.80
215.11823	36640.1	33.78
216.60176	851.0	0.78
232.76676	776.3	0.72
249.91132	885.0	0.82
253.06889	830.7	0.77
272.70582	916.5	0.84
277.71341	913.2	0.84
288.17198	2257.9	2.08
288.64323	918.6	0.85
303.11815	913.3	0.84
303.70211	937.1	0.86
307.64839	749.6	0.69
323.40656	818.4	0.75
329.23383	1072.4	0.99
342.04975	867.4	0.80
345.22789	17557.2	16.19
352.05203	829.1	0.76
353.70766	728.2	0.67
359.07204	904.3	0.83
362.25507	4062.1	3.75
390.21821	832.9	0.77
413.02803	991.0	0.91
416.30252	39783.5	36.68

Hololenasp#4384-4412 RT: 10.94-11.01 AV: 6

F: FTMS + p ESI d Full ms2 532.31@hcd35.00 [50.00-560.00]

m/z= 50.00000-1000.00000

m/z	Intensity	Relative
454.44654	873.7	0.81
455.44503	994.2	0.92
460.19736	895.4	0.83
506.53697	808.9	0.75
514.38346	1004.7	0.93
532.39709	17899.5	16.50