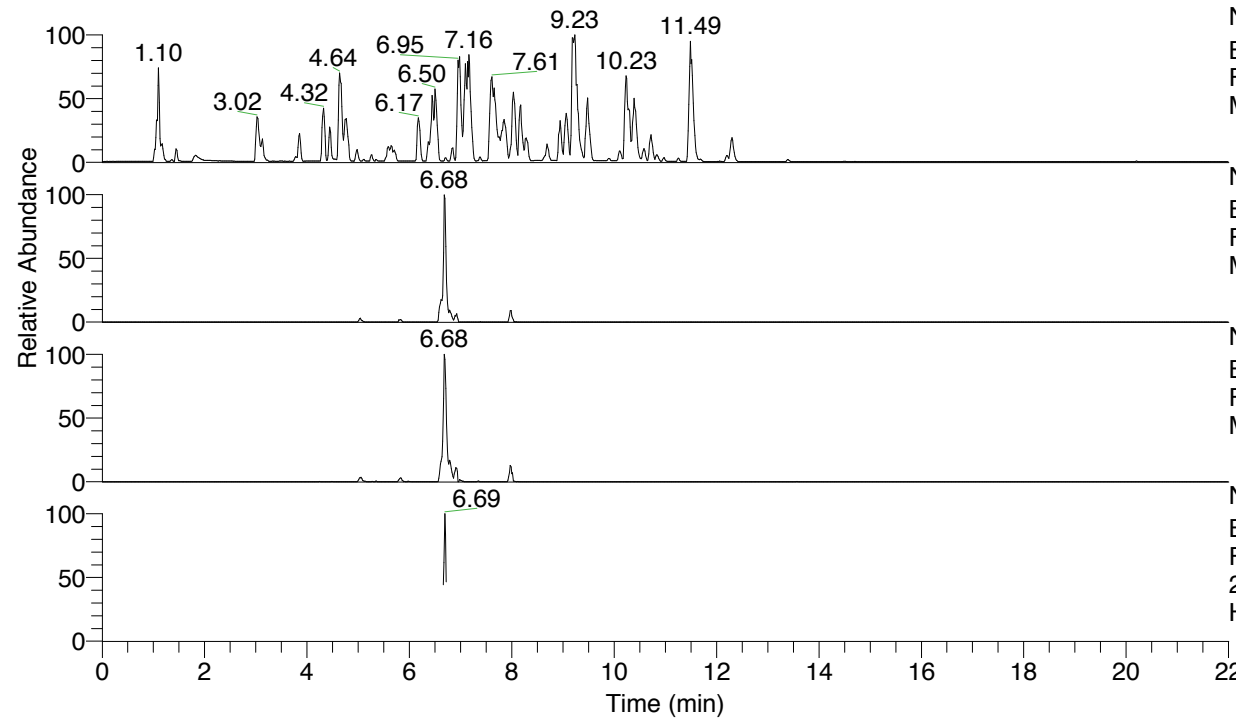


RT: 0.00 - 22.00



NL: 4.98E7
 Base Peak m/z= 100.00000-1500.00000 F:
 FTMS + p ESI Full ms [100.00-1500.00]
 MS Hololenasp

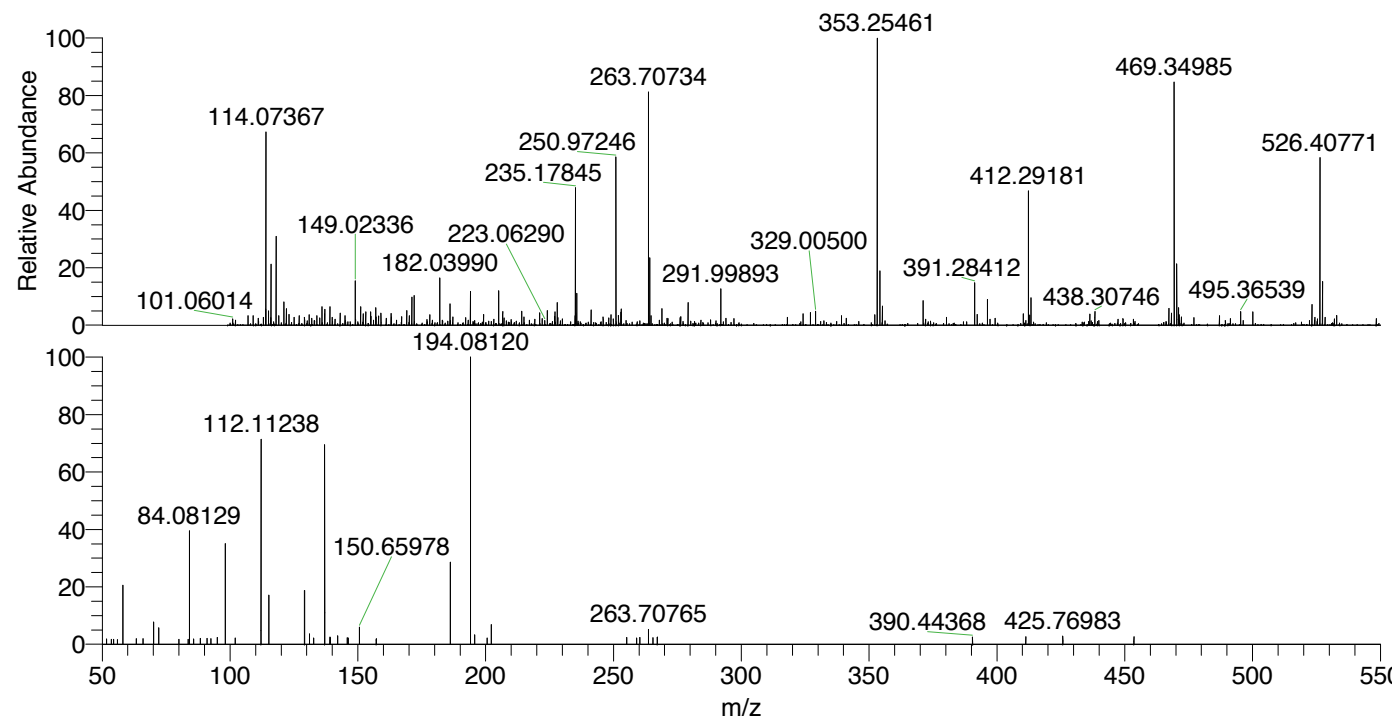
NL: 4.90E5
 Base Peak m/z= 526.40545-526.41071 F:
 FTMS + p ESI Full ms [100.00-1500.00]
 MS Hololenasp

NL: 6.86E5
 Base Peak m/z= 263.70663-263.70927 F:
 FTMS + p ESI Full ms [100.00-1500.00]
 MS Hololenasp

NL: 6.23E4
 Base Peak m/z= 50.00000-1500.00000 F:
 FTMS + p ESI d Full ms2
 263.71@hcd35.00 [50.00-555.00] MS
 Hololenasp

Hololenasp#2658-2674 RT: 6.66-6.70
 F: FTMS + p ESI d Full ms2 263.71 ...
 m/z= 50.00000-1000.00000

m/z	Intensity	Relative
51.64818	653.0	1.51
52.82430	636.1	1.47
58.06600	8431.4	19.48
63.32317	718.3	1.66
66.02123	715.2	1.65
70.06590	3536.4	8.17
72.08171	2107.2	4.87
75.94160	662.9	1.53
84.08128	15802.7	36.51
85.69795	648.7	1.50
88.35260	759.1	1.75
88.37206	677.0	1.56
91.01726	731.1	1.69
92.52922	699.0	1.62
95.06459	846.1	1.95
98.09684	14191.2	32.79
102.04576	802.5	1.85
103.59565	740.0	1.71
112.11239	31550.3	72.90
112.31844	824.6	1.91
115.12343	7545.5	17.43
120.35269	847.4	1.96
121.02837	1118.3	2.58
129.13916	7017.2	16.21
131.11800	1991.7	4.60
132.74127	772.9	1.79
137.02332	29188.0	67.44
139.11457	889.0	2.05
139.18984	805.0	1.86
142.14652	1086.4	2.51
145.87622	841.5	1.94
146.22103	817.3	1.89
150.65978	2154.6	4.98
157.18950	717.9	1.66
186.19685	11298.3	26.11
194.08123	43279.4	100.00
195.70016	1185.4	2.74
196.60236	692.4	1.60
200.57212	817.9	1.89
202.19133	2458.6	5.68
231.13367	773.7	1.79
243.23994	874.4	2.02
255.19492	848.9	1.96
259.01882	762.2	1.76
260.28209	873.2	2.02
263.70765	1856.4	4.29
265.44347	830.5	1.92
267.13279	910.6	2.10
390.44368	898.7	2.08
411.30672	939.6	2.17
425.76983	1016.9	2.35
453.59589	943.6	2.18
456.90940	827.5	1.91
518.88012	796.6	1.84
551.77387	848.4	1.96



NL: 8.40E5
 Hololenasp#2665 RT:
 6.68 AV: 1 T: FTMS + p
 ESI Full lock ms
 [100.00-1500.00]

NL: 4.79E4
 Hololenasp#2660-2678
 RT: 6.67-6.70 AV: 3 F:
 FTMS + p ESI d Full ms2
 263.71@hcd35.00
 [50.00-555.00]

Hololenasp#2658-2681 RT: 6.66-6.72 AV: 5

F: FTMS + p ESI d Full ms2 263.71@hcd35.00 [50.00-555.00]

m/z= 50.00000-1000.00000

m/z	Intensity	Relative
51.64818	517.8	1.30
51.86960	468.9	1.18
52.82429	505.2	1.27
53.28507	474.5	1.19
53.53220	477.9	1.20
54.39820	504.8	1.27
54.45428	453.9	1.14
55.98622	449.6	1.13
56.71296	445.7	1.12
58.06598	7551.5	18.93
60.85026	468.5	1.17
63.32317	580.3	1.45
66.02123	577.2	1.45
67.07552	539.2	1.35
70.06589	3400.5	8.53
72.08171	1696.9	4.25
75.94161	532.9	1.34
79.95911	496.8	1.25
83.66368	506.2	1.27
84.08129	15316.7	38.40
85.69795	521.3	1.31
88.35260	608.1	1.52
88.37206	543.1	1.36
91.01726	586.6	1.47
92.52922	561.2	1.41
95.06459	677.7	1.70
98.09683	12634.8	31.68
102.04577	639.0	1.60
103.59566	591.7	1.48
112.11243	30531.5	76.54
112.31844	657.1	1.65
115.12345	6027.7	15.11
118.42623	593.5	1.49
120.35270	675.7	1.69
121.02836	890.6	2.23
129.13919	6365.0	15.96
130.45306	623.4	1.56
130.88469	582.7	1.46
131.11800	1586.1	3.98

Hololenasp#2658-2681 RT: 6.66-6.72 AV: 5

F: FTMS + p ESI d Full ms2 263.71@hcd35.00 [50.00-555.00]

m/z= 50.00000-1000.00000

m/z	Intensity	Relative
132.74127	615.2	1.54
137.02329	27256.0	68.33
139.11456	707.4	1.77
139.18983	639.6	1.60
141.63871	645.5	1.62
142.14653	864.4	2.17
145.87624	669.0	1.68
146.22105	649.5	1.63
150.65977	1713.4	4.30
157.18951	570.8	1.43
157.89066	596.1	1.49
162.82590	633.9	1.59
186.19682	9725.9	24.38
194.08122	39887.5	100.00
195.70068	1889.8	4.74
196.44835	610.0	1.53
196.60236	552.0	1.38
200.57215	651.8	1.63
202.19132	1958.6	4.91
231.13366	616.1	1.54
243.23992	695.4	1.74
255.19491	673.5	1.69
259.01881	605.8	1.52
260.28210	692.8	1.74
263.70763	1475.3	3.70
265.44344	660.4	1.66
267.13278	724.1	1.82
275.83083	704.8	1.77
303.63172	662.8	1.66
325.56269	641.8	1.61
390.44362	712.6	1.79
411.30665	753.7	1.89
425.76974	822.0	2.06
453.59586	760.0	1.91
456.90929	668.2	1.68
469.54769	772.4	1.94
518.88007	641.6	1.61
551.77382	682.8	1.71