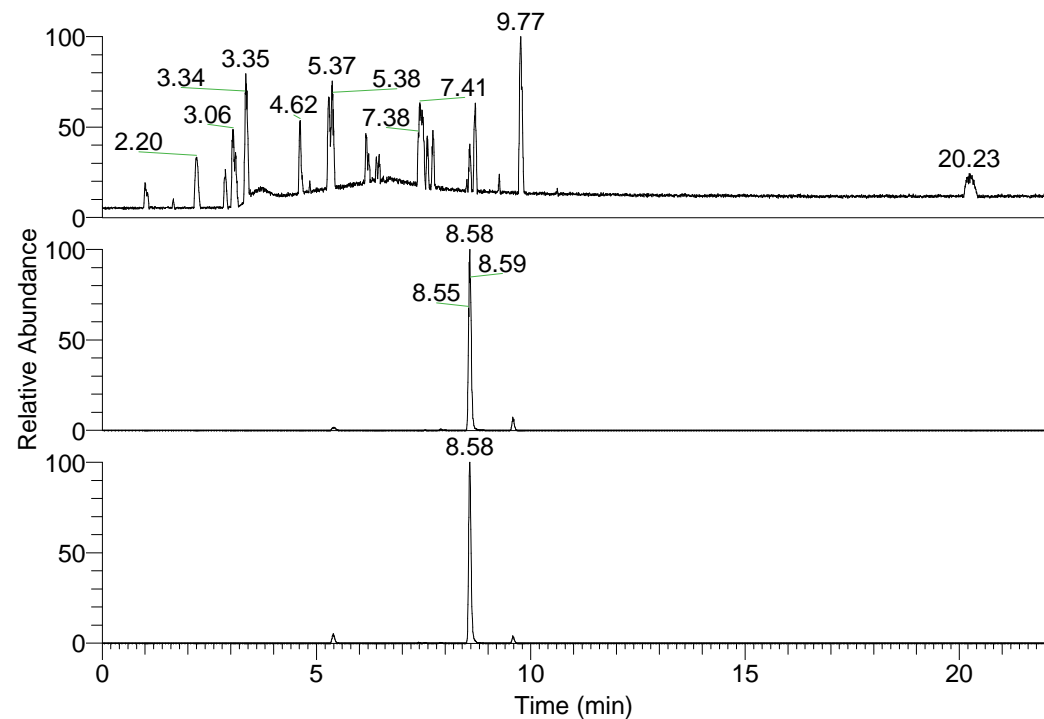


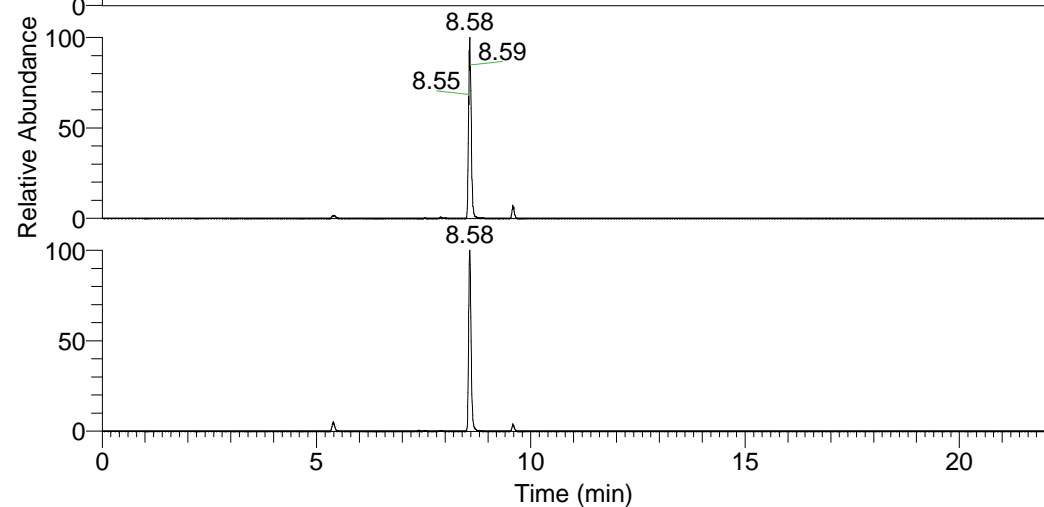
RT: 0.00 - 22.01



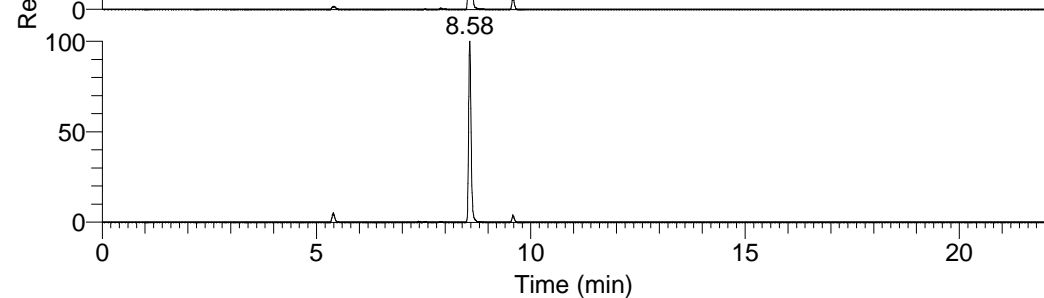
NL: 1.37E8  
 Base Peak m/z=  
 100.00000-1500.00000 F:  
 FTMS + p ESI Full ms  
 [100.00-1500.00] MS  
 Hololenasp\_HDX

Hololenasp\_HDX#1554 RT: 9.58  
 T: FTMS + p ESI Full ms [100.00-1500.00]  
 m/z= 515.00000-516.00000

m/z	Intensity	Relative	Delta (ppm)	Composition
515.43774	4101604.8	100.00	-0.12	C <sub>26</sub> H <sub>39</sub> <sup>2</sup> H <sub>9</sub> O <sub>3</sub> N <sub>7</sub>
			2.88	C <sub>26</sub> H <sub>37</sub> <sup>2</sup> H <sub>10</sub> O <sub>3</sub> N <sub>7</sub>
			-3.12	C <sub>26</sub> H <sub>41</sub> <sup>2</sup> H <sub>8</sub> O <sub>3</sub> N <sub>7</sub>

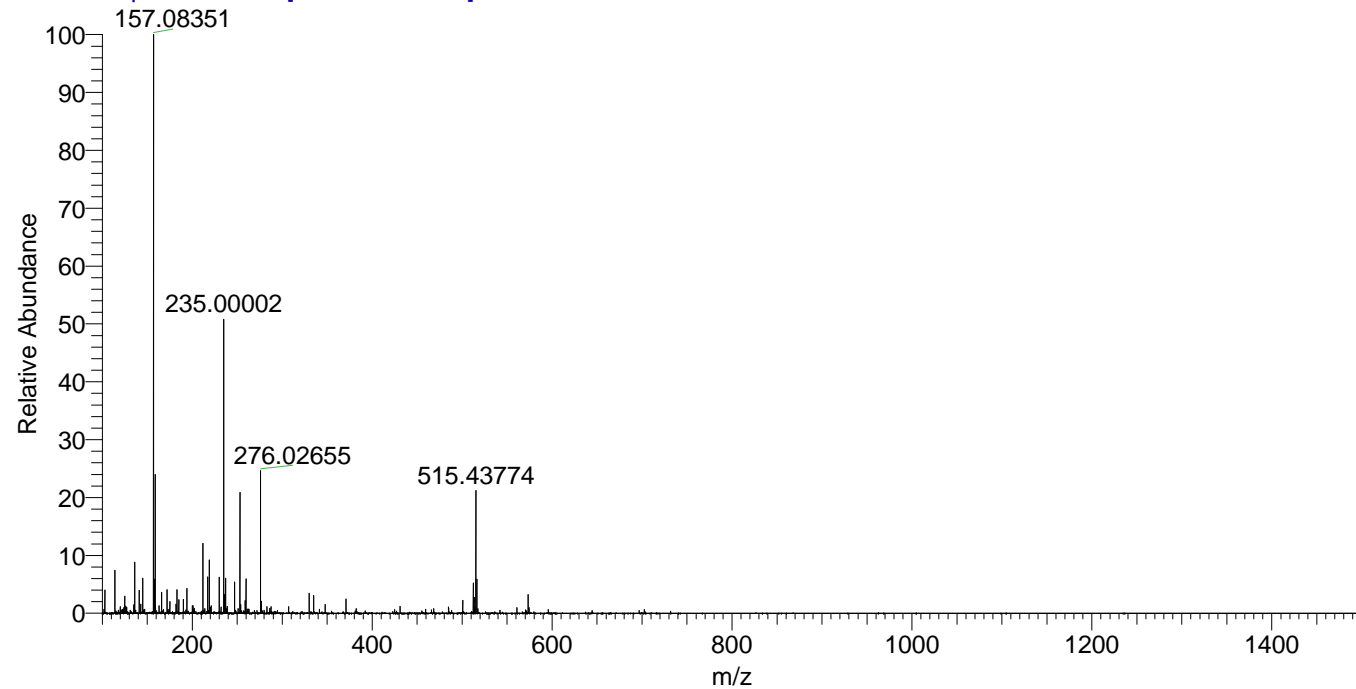


NL: 5.57E7  
 Base Peak m/z=  
 515.43578-515.44094 F: FTMS  
 + p ESI Full ms  
 [100.00-1500.00] MS  
 Hololenasp\_HDX



NL: 1.03E7  
 Base Peak m/z=  
 258.72494-258.72752 F: FTMS  
 + p ESI Full ms  
 [100.00-1500.00] MS  
 Hololenasp\_HDX

Hololenasp\_HDX #1554 RT: 9.58 AV: 1 NL: 1.92E7  
 T: FTMS + p ESI Full ms [100.00-1500.00]



Hololenasp\_HDX #1554 RT: 9.58 AV: 1 NL: 4.06E6  
 T: FTMS + p ESI Full ms [100.00-1500.00]

