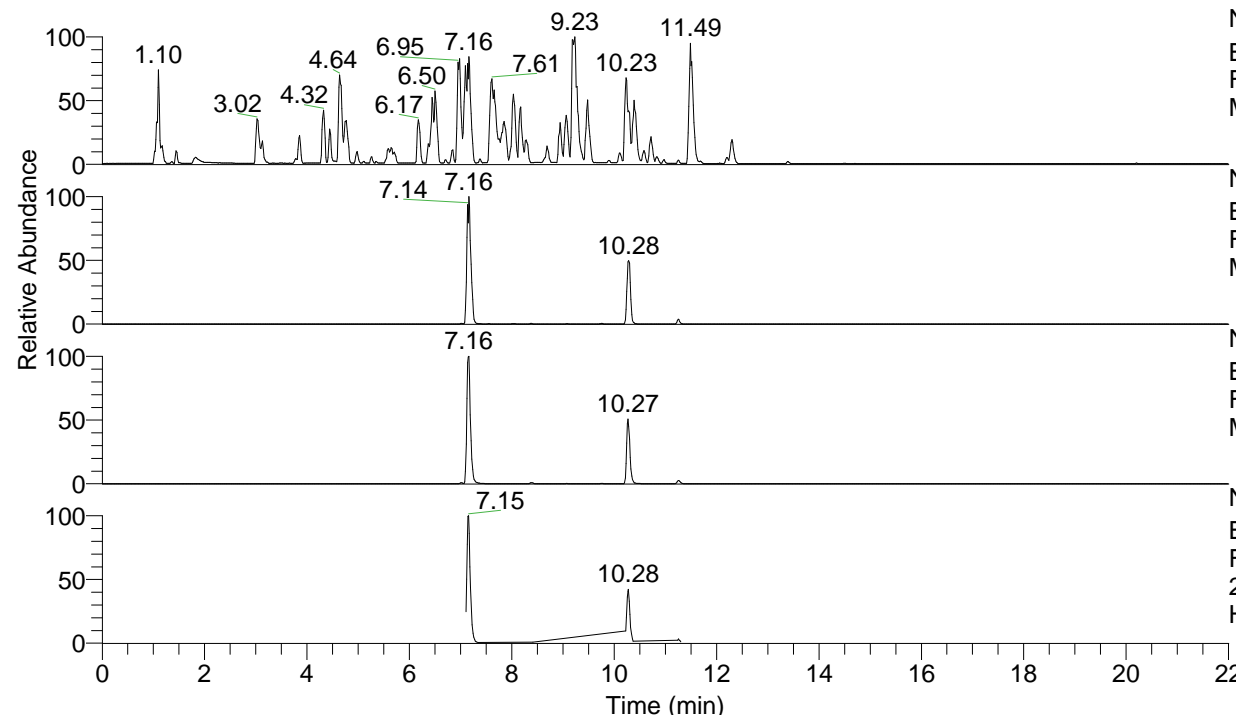


RT: 0.00 - 22.00



NL: 4.98E7
 Base Peak m/z = 100.00000-1500.00000 F:
 FTMS + p ESI Full ms [100.00-1500.00]
 MS Hololenasp

NL: 4.21E7
 Base Peak m/z = 506.37933-506.38439 F:
 FTMS + p ESI Full ms [100.00-1500.00]
 MS Hololenasp

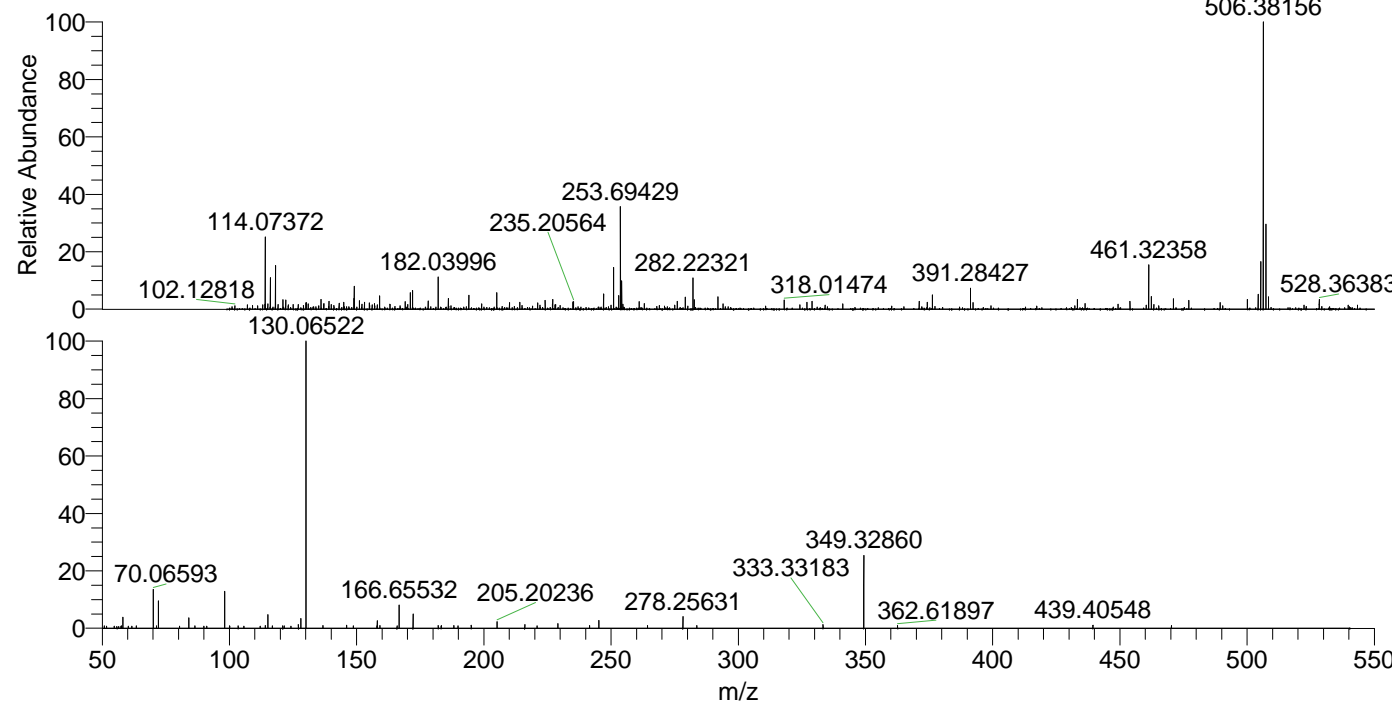
NL: 2.15E7
 Base Peak m/z = 253.69357-253.69611 F:
 FTMS + p ESI Full ms [100.00-1500.00]
 MS Hololenasp

NL: 3.33E6
 Base Peak m/z = 50.00000-1500.00000 F:
 FTMS + p ESI d Full ms2
 253.69@hcd35.00 [50.00-535.00] MS
 Hololenasp

Hololenasp#4504-4521 RT: 11.24-11.28

F: FTMS + p ESI d Full ms2 253.69 ...
 m/z = 50.00000-1000.00000

m/z	Intensity	Relative
50.84653	653.4	0.79
57.56855	653.4	0.79
58.06600	3156.0	3.80
61.60116	643.9	0.78
63.44916	713.8	0.86
70.06593	11205.7	13.50
71.29502	711.6	0.86
72.08149	7940.8	9.57
84.08152	3007.6	3.62
86.38904	717.4	0.86
89.97495	638.0	0.77
98.09708	11058.6	13.32
100.07574	700.5	0.84
103.47046	706.9	0.85
105.66754	649.6	0.78
112.05020	631.6	0.76
114.09102	782.1	0.94
115.12345	4025.4	4.85
116.92559	694.5	0.84
120.95810	657.6	0.79
121.54326	669.2	0.81
124.16948	648.2	0.78
127.09331	763.4	0.92
127.12252	1092.1	1.32
128.10764	2816.4	3.39
130.06522	83006.9	100.00
136.73343	820.5	0.99
146.06036	858.1	1.03
148.65779	725.9	0.87
158.06049	681.2	0.82
158.14159	2183.5	2.63
159.18632	804.4	0.97
165.88812	758.0	0.91
166.65532	6796.9	8.19
172.18063	4182.1	5.04
182.10400	749.8	0.90
183.24277	835.4	1.01
188.17553	829.1	1.00
189.88846	716.9	0.86
195.06255	874.9	1.05
205.20236	1958.9	2.36
216.09321	854.0	1.03
216.14364	1014.7	1.22
220.90946	734.3	0.88
229.13424	1314.8	1.58
241.59082	849.5	1.02
245.23348	2350.4	2.83
264.33279	794.0	0.96
278.25631	3443.8	4.15
283.67355	764.3	0.92
333.33183	1038.6	1.25
349.32860	21403.0	25.78
362.61897	816.5	0.98
439.40548	863.3	1.04
470.29772	813.8	0.98



NL: 1.57E6
 Hololenasp#4507 RT:
 11.25 AV: 1 T: FTMS + p
 ESI Full lock ms
 [100.00-1500.00]

NL: 8.27E4
 Hololenasp#4501-4523
 RT: 11.24-11.28 AV: 4 F:
 FTMS + p ESI d Full ms2
 253.69@hcd35.00
 [50.00-535.00]