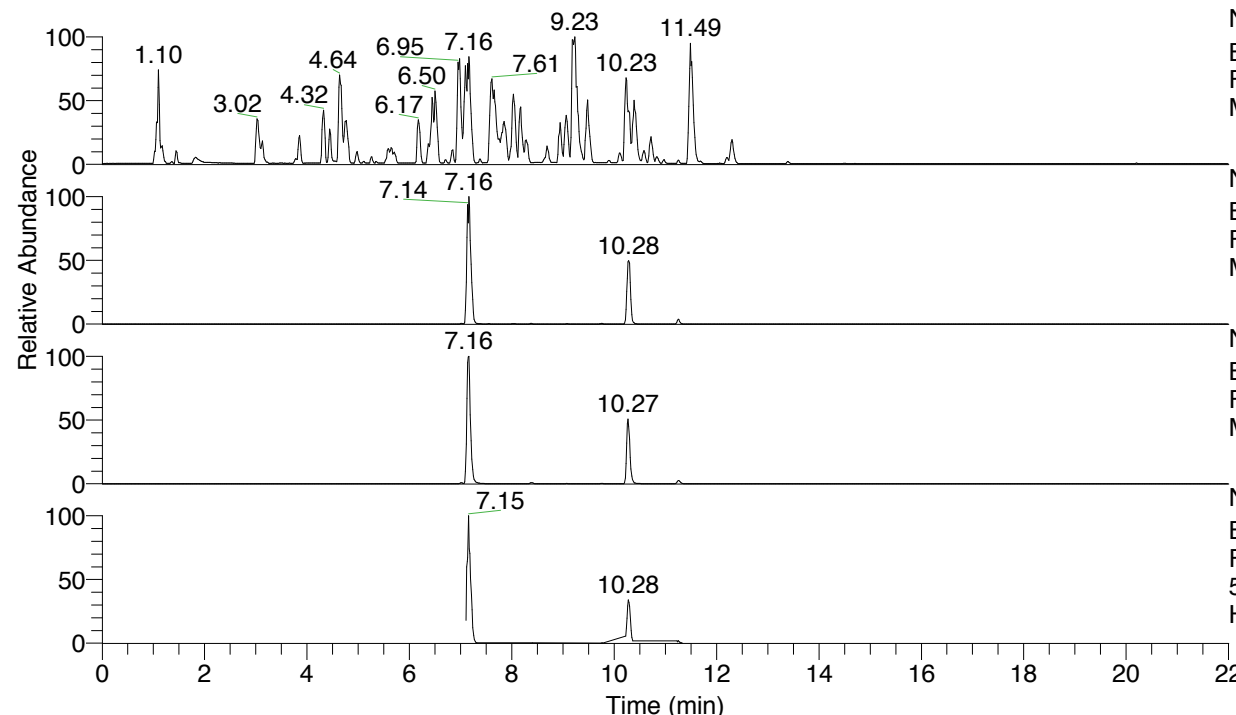


RT: 0.00 - 22.00



NL: 4.98E7  
 Base Peak m/z= 100.00000-1500.00000 F:  
 FTMS + p ESI Full ms [100.00-1500.00]  
 MS Hololenasp

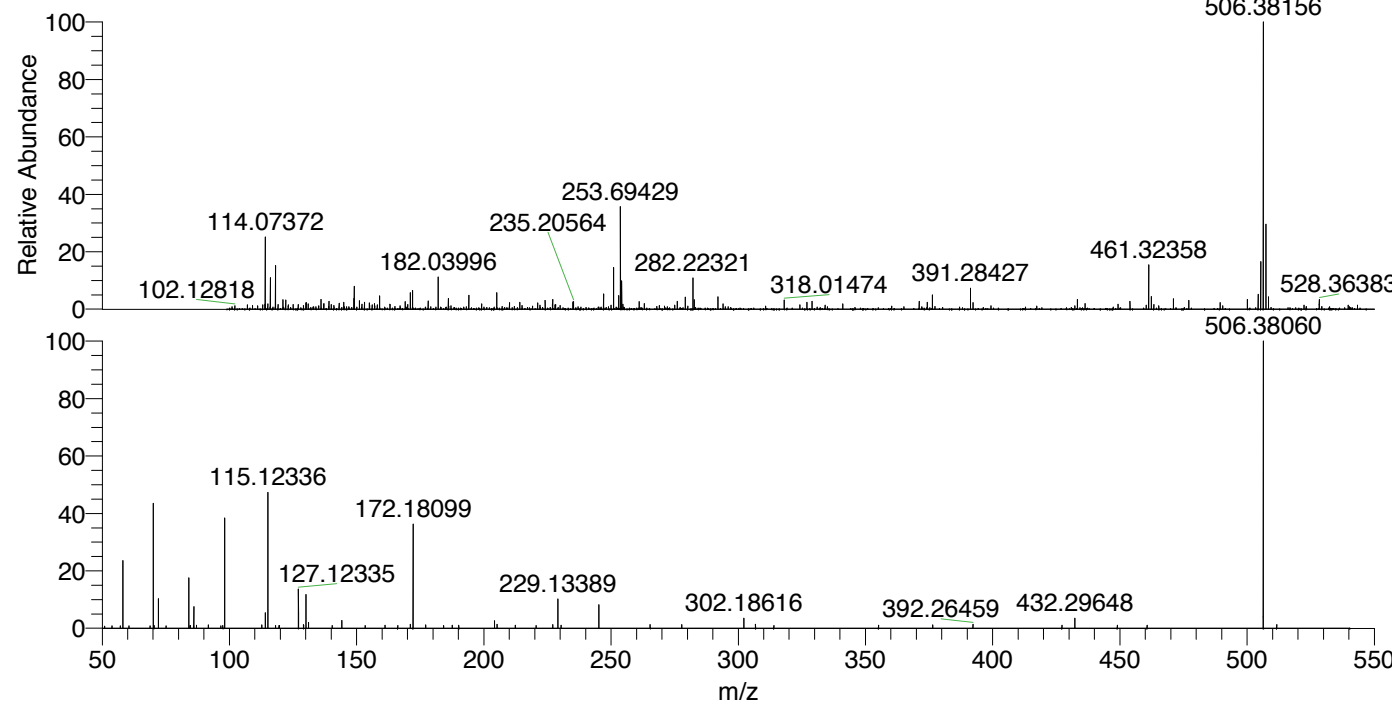
NL: 4.21E7  
 Base Peak m/z= 506.37933-506.38439 F:  
 FTMS + p ESI Full ms [100.00-1500.00]  
 MS Hololenasp

NL: 2.15E7  
 Base Peak m/z= 253.69357-253.69611 F:  
 FTMS + p ESI Full ms [100.00-1500.00]  
 MS Hololenasp

NL: 6.39E6  
 Base Peak m/z= 50.00000-1500.00000 F:  
 FTMS + p ESI d Full ms2  
 506.38@hcd35.00 [50.00-535.00] MS  
 Hololenasp

Hololenasp#4498-4520 RT: 11.23-11.28  
 F: FTMS + p ESI d Full ms2 506.38 ...  
 m/z= 50.00000-1000.00000

m/z	Intensity	Relative
58.06593	20370.3	23.66
70.06589	37760.6	43.86
70.38243	778.6	0.90
72.08154	9059.6	10.52
84.08137	15200.3	17.66
84.57999	779.2	0.91
84.60297	833.3	0.97
86.06064	6726.1	7.81
87.09220	951.0	1.10
91.75211	999.4	1.16
97.42877	817.3	0.95
98.09707	33362.6	38.76
112.75767	1058.3	1.23
114.09161	4738.5	5.50
115.12336	40916.5	47.53
118.16694	823.2	0.96
119.54479	823.2	0.96
119.67852	835.8	0.97
127.12335	11913.9	13.84
129.13866	1104.3	1.28
130.06558	10279.7	11.94
131.11864	1794.7	2.08
140.44610	844.5	0.98
144.14992	2393.9	2.78
153.39630	850.4	0.99
161.18003	899.3	1.04
166.13735	812.4	0.94
171.14990	1236.0	1.44
172.18099	31422.4	36.50
177.18577	1014.7	1.18
184.18025	830.6	0.96
187.62328	922.2	1.07
190.15493	938.6	1.09
204.19402	2221.4	2.58
205.20300	1227.8	1.43
212.38748	910.6	1.06
220.54215	839.8	0.98
227.11805	1145.4	1.33
229.13389	9065.5	10.53
230.38696	868.9	1.01
245.23363	7067.1	8.21
265.38075	1134.0	1.32
277.82565	1154.4	1.34
302.18616	3020.0	3.51
306.77836	1164.6	1.35
313.97826	872.7	1.01
355.12575	933.0	1.08
376.44915	1020.3	1.19
392.26459	1176.2	1.37
427.23891	950.9	1.10
432.29648	3085.2	3.58
448.99894	932.6	1.08
460.71267	930.6	1.08
506.38060	86085.8	100.00
511.65389	1132.2	1.32



NL: 1.57E6  
 Hololenasp#4507 RT:  
 11.25 AV: 1 T: FTMS + p  
 ESI Full lock ms  
 [100.00-1500.00]

NL: 8.61E4  
 Hololenasp#4496-4523  
 RT: 11.23-11.28 AV: 5 F:  
 FTMS + p ESI d Full ms2  
 506.38@hcd35.00  
 [50.00-535.00]

Hololenasp#4498-4520 RT: 11.23-11.28 AV: 5

F: FTMS + p ESI d Full ms2 506.38@hcd35.00 [50.00-535.00]

m/z= 50.00000-1000.00000

m/z	Intensity	Relative
50.88688	628.9	0.73
53.83120	711.3	0.83
57.15681	745.3	0.87
58.06593	20370.3	23.66
60.52152	726.5	0.84
68.82242	734.5	0.85
70.06589	37760.6	43.86
70.38243	778.6	0.90
72.08154	9059.6	10.52
75.10053	722.0	0.84
84.08137	15200.3	17.66
84.57999	779.2	0.91
84.60297	833.3	0.97
85.89309	753.3	0.88
86.06064	6726.1	7.81
87.09220	951.0	1.10
91.75211	999.4	1.16
96.63889	747.0	0.87
97.42877	817.3	0.95
98.09707	33362.6	38.76
112.75767	1058.3	1.23
114.09161	4738.5	5.50
115.12336	40916.5	47.53
118.16694	823.2	0.96
119.54479	823.2	0.96
119.67852	835.8	0.97
127.12335	11913.9	13.84
129.13866	1104.3	1.28
130.06558	10279.7	11.94
131.11864	1794.7	2.08
140.44610	844.5	0.98
144.14992	2393.9	2.78
153.39630	850.4	0.99
161.18003	899.3	1.04
166.13735	812.4	0.94
171.14990	1236.0	1.44
172.18099	31422.4	36.50
177.18577	1014.7	1.18
184.18025	830.6	0.96

Hololenasp#4498-4520 RT: 11.23-11.28 AV: 5

F: FTMS + p ESI d Full ms2 506.38@hcd35.00 [50.00-535.00]

m/z= 50.00000-1000.00000

m/z	Intensity	Relative
187.62328	922.2	1.07
190.15493	938.6	1.09
204.19402	2221.4	2.58
205.20300	1227.8	1.43
212.38748	910.6	1.06
220.54215	839.8	0.98
227.11805	1145.4	1.33
229.13389	9065.5	10.53
230.38696	868.9	1.01
245.23363	7067.1	8.21
265.38075	1134.0	1.32
277.82565	1154.4	1.34
302.18616	3020.0	3.51
306.77836	1164.6	1.35
313.97826	872.7	1.01
355.12575	933.0	1.08
376.44915	1020.3	1.19
392.26459	1176.2	1.37
427.23891	950.9	1.10
432.29648	3085.2	3.58
448.99894	932.6	1.08
460.71267	930.6	1.08
506.38060	86085.8	100.00
511.65389	1132.2	1.32