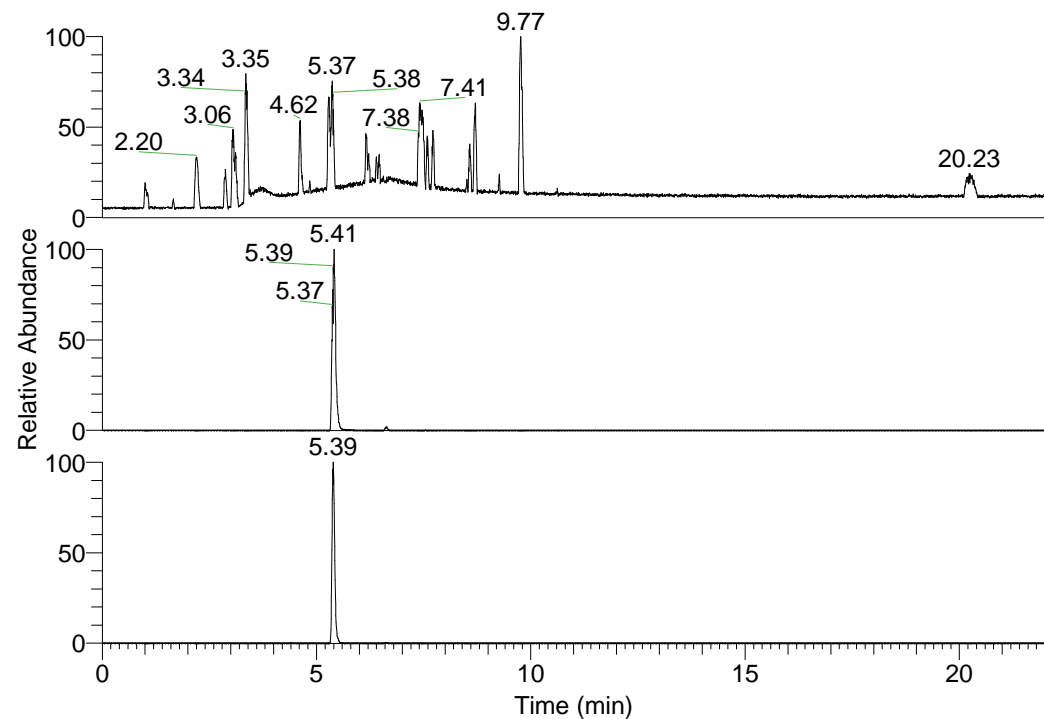


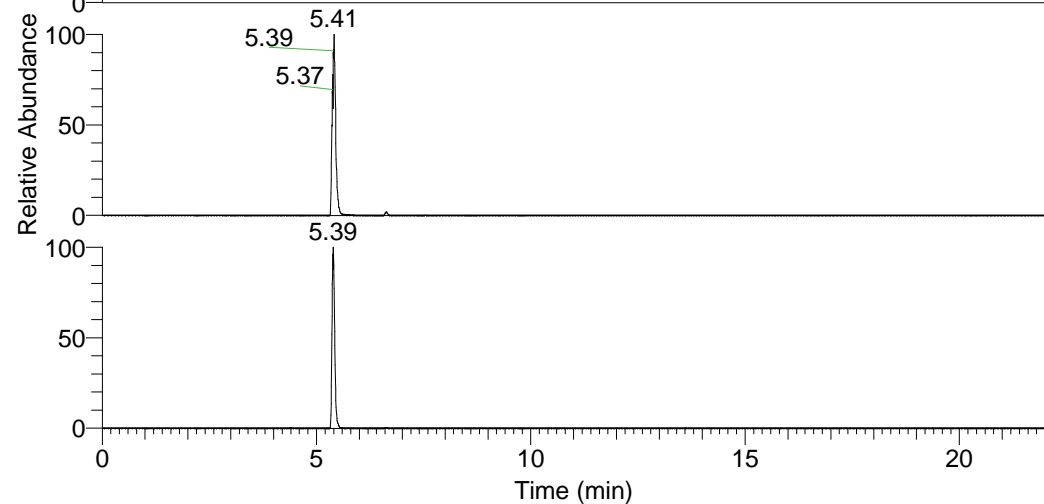
RT: 0.00 - 22.01



NL: 1.37E8  
Base Peak m/z=  
100.00000-1500.00000 F:  
FTMS + p ESI Full ms  
[100.00-1500.00] MS  
Hololenasp\_HDX

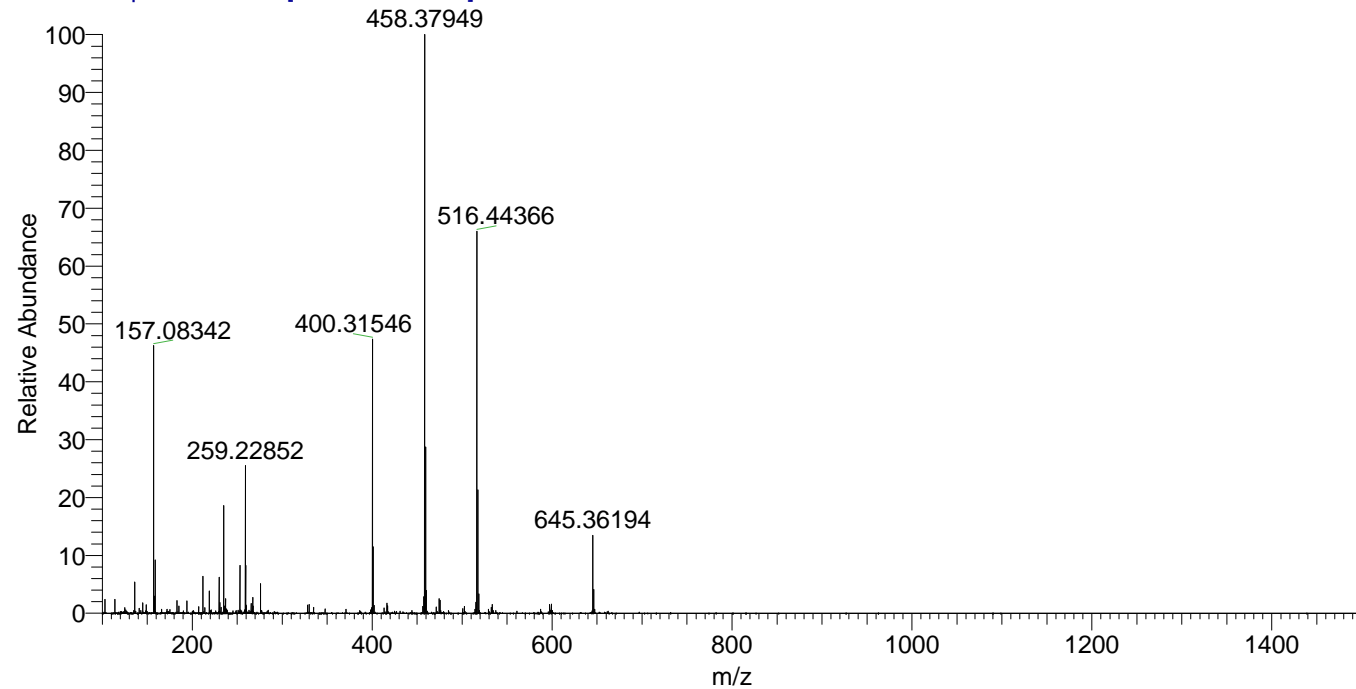
Hololenasp\_HDX#855 RT: 5.41  
T: FTMS + p ESI Full ms [100.00-1500.00]  
m/z= 516.00000-517.00000

m/z	Intensity	Relative	Delta (ppm)	Composition
516.44366	33455778.0	100.00	-0.81	C <sub>26</sub> H <sub>38</sub> <sup>2</sup> H <sub>10</sub> O <sub>3</sub> N <sub>7</sub>
			2.19	C <sub>26</sub> H <sub>36</sub> <sup>2</sup> H <sub>11</sub> O <sub>3</sub> N <sub>7</sub>
			-3.81	C <sub>26</sub> H <sub>40</sub> <sup>2</sup> H <sub>9</sub> O <sub>3</sub> N <sub>7</sub>



NL: 3.35E7  
Base Peak m/z=  
516.44205-516.44721 F: FTMS  
+ p ESI Full ms  
[100.00-1500.00] MS  
Hololenasp\_HDX

Hololenasp\_HDX #855 RT: 5.41 AV: 1 NL: 5.04E7  
T: FTMS + p ESI Full ms [100.00-1500.00]



Hololenasp\_HDX #855 RT: 5.41 AV: 1 NL: 3.33E7  
T: FTMS + p ESI Full ms [100.00-1500.00]

