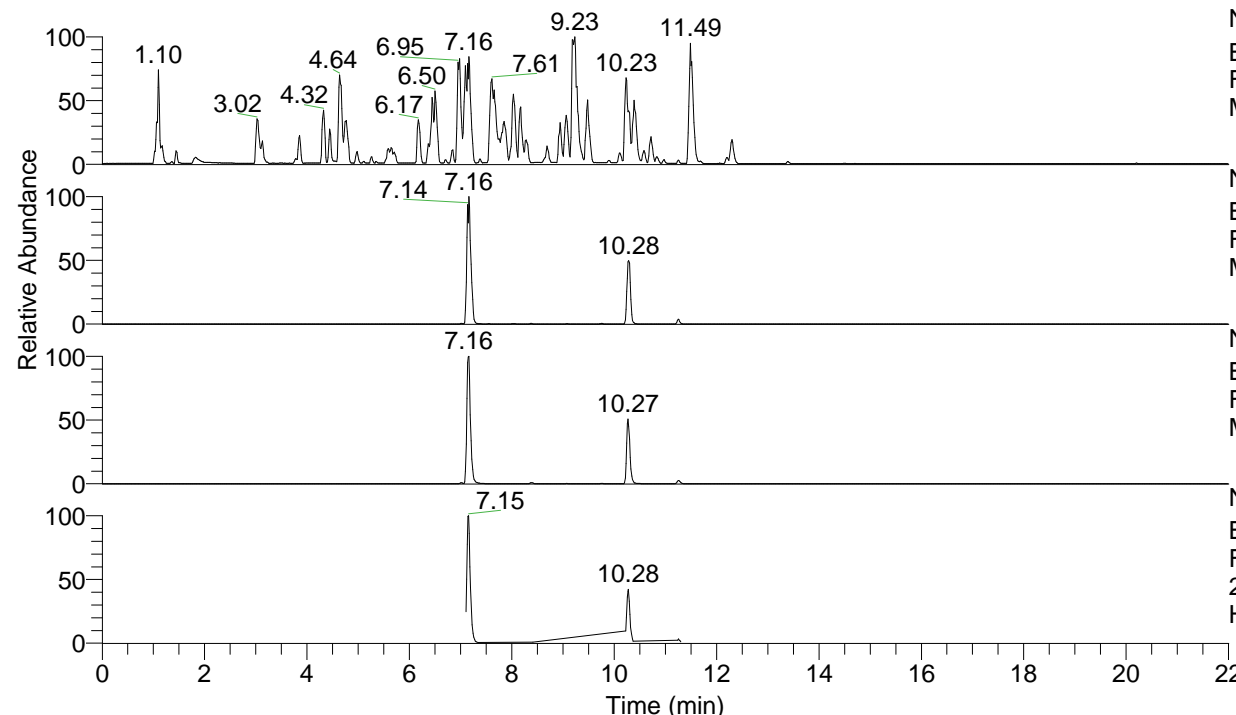


RT: 0.00 - 22.00



NL: 4.98E7  
 Base Peak m/z= 100.00000-1500.00000 F:  
 FTMS + p ESI Full ms [100.00-1500.00]  
 MS Hololenasp

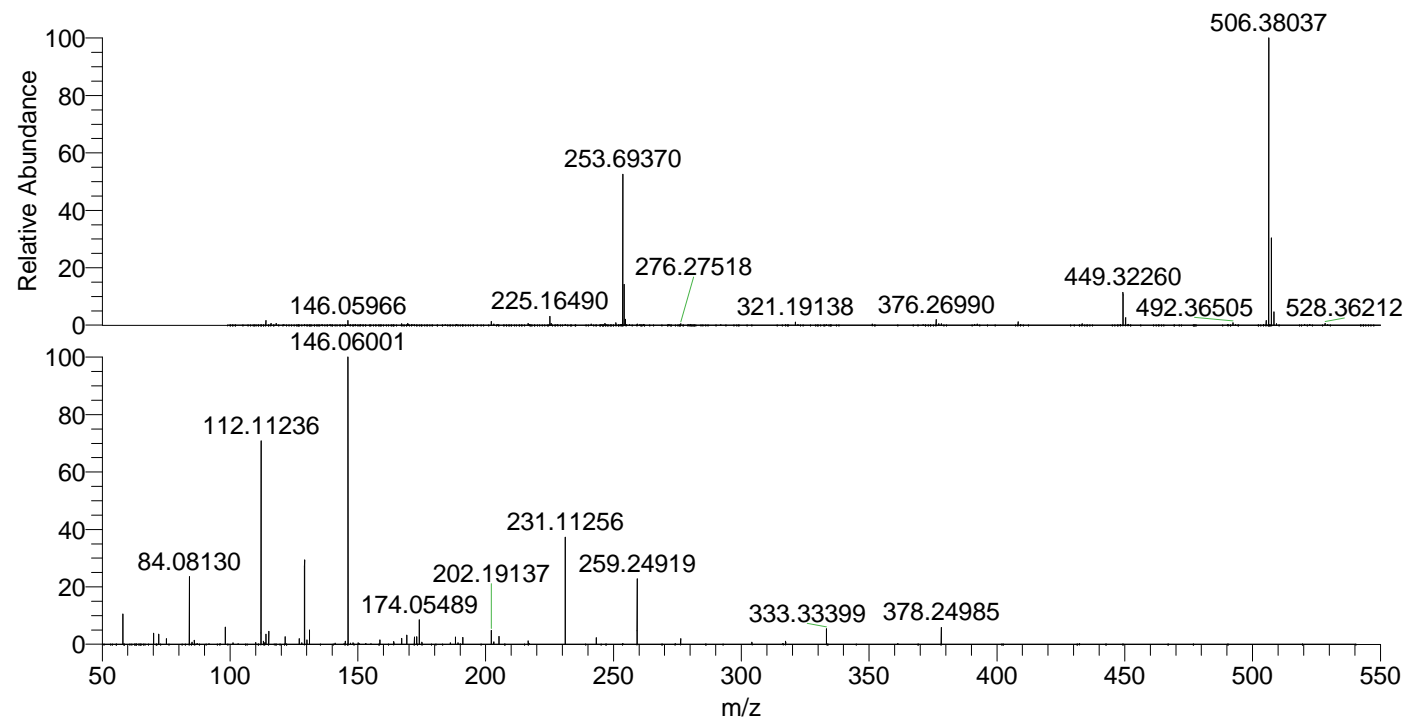
NL: 4.21E7  
 Base Peak m/z= 506.37933-506.38439 F:  
 FTMS + p ESI Full ms [100.00-1500.00]  
 MS Hololenasp

NL: 2.15E7  
 Base Peak m/z= 253.69357-253.69611 F:  
 FTMS + p ESI Full ms [100.00-1500.00]  
 MS Hololenasp

NL: 3.33E6  
 Base Peak m/z= 50.00000-1500.00000 F:  
 FTMS + p ESI d Full ms2  
 253.69@hcd35.00 [50.00-535.00] MS  
 Hololenasp

Hololenasp#2838-2883 RT: 7.11-7.21 AV: 9  
 F: FTMS + p ESI d Full ms2 253.69@h ...  
 m/z= 50.00000-1000.00000

m/z	Intensity	Relative
58.06592	208089.8	10.52
70.06587	77395.1	3.91
72.08148	72591.7	3.67
75.09232	38392.1	1.94
84.08131	469701.2	23.75
85.07657	14831.1	0.75
86.06062	27964.2	1.41
98.09691	119378.4	6.04
101.10783	10071.6	0.51
110.09688	12651.8	0.64
112.11237	1400443.6	70.82
113.10759	19768.0	1.00
113.61783	12852.5	0.65
114.09174	69861.2	3.53
115.12319	89139.0	4.51
121.61513	50495.6	2.55
127.12315	38440.9	1.94
128.10708	11224.9	0.57
129.13875	587186.8	29.69
130.12826	31554.8	1.60
131.11790	100164.2	5.07
145.05215	19670.5	0.99
146.06002	1977482.5	100.00
148.14456	10264.3	0.52
158.65726	31157.7	1.58
164.07053	18544.4	0.94
167.17052	42323.5	2.14
169.17005	64362.2	3.25
172.18094	50839.0	2.57
173.04734	50407.2	2.55
174.05490	171889.3	8.69
175.08634	13472.1	0.68
188.17578	48195.8	2.44
191.05759	47245.1	2.39
202.19141	99058.0	5.01
203.08168	10220.5	0.52
203.22304	17212.6	0.87
205.20243	54100.3	2.74
216.65213	23369.3	1.18
231.11258	752590.9	38.06
243.25431	46435.6	2.35
259.24921	452548.3	22.89
276.27585	38811.5	1.96
304.16500	14959.8	0.76
317.33839	21041.6	1.06
333.33398	107021.9	5.41
378.24981	116119.3	5.87



NL: 4.09E7  
 Hololenasp#2863 RT:  
 7.16 AV: 1 T: FTMS + p  
 ESI Full ms  
 [100.00-1500.00]

NL: 2.12E6  
 Hololenasp#2837-2877  
 RT: 7.11-7.20 AV: 8 F:  
 FTMS + p ESI d Full ms2  
 253.69@hcd35.00  
 [50.00-535.00]