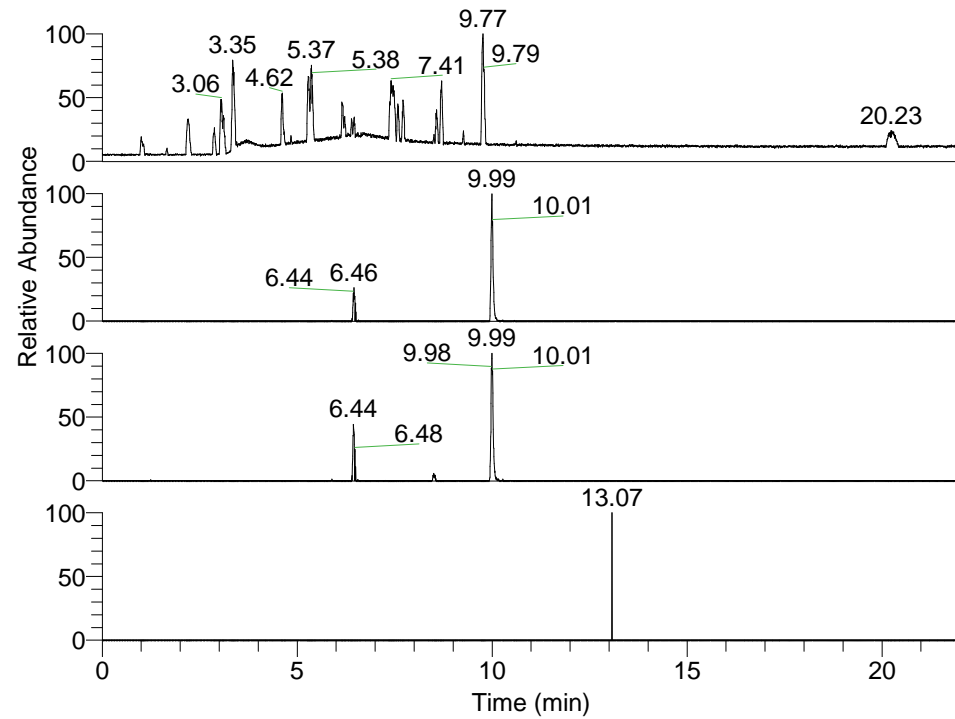
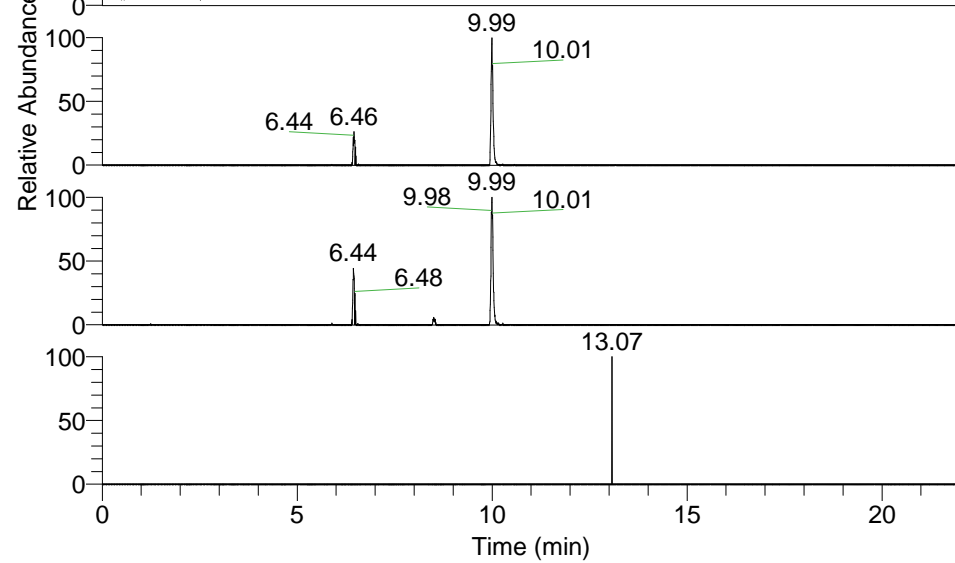


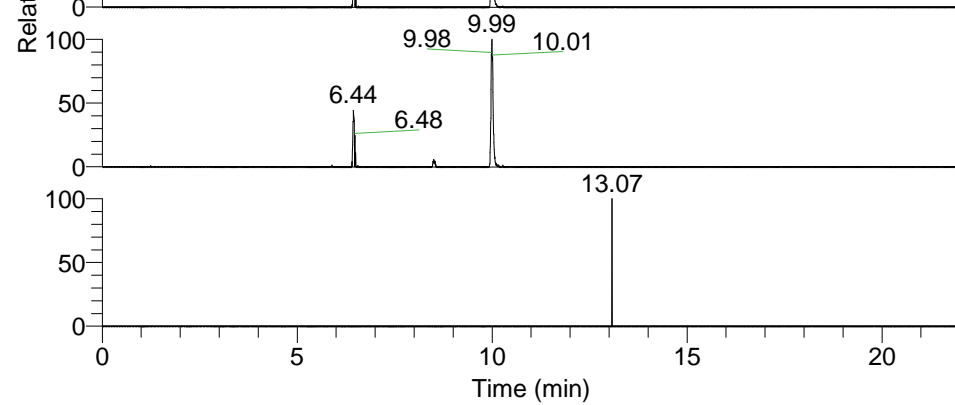
RT: 0.00 - 22.01



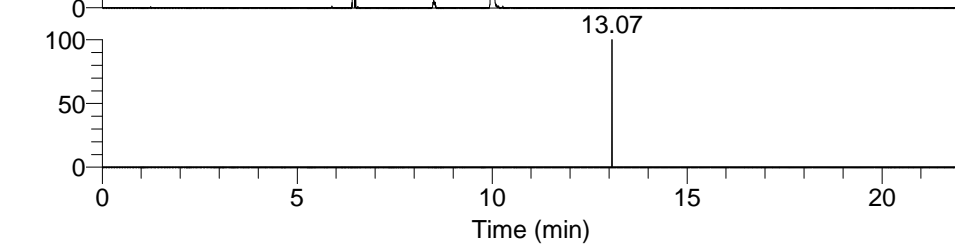
NL: 1.37E8  
 Base Peak m/z=  
 100.00000-1500.00000 F: FTMS + p  
 ESI Full ms [100.00-1500.00] MS  
 Hololenasp\_HDX



NL: 6.17E5  
 Base Peak m/z= 510.41545-510.42055  
 F: FTMS + p ESI Full ms  
 [100.00-1500.00] MS Hololenasp\_HDX



NL: 7.99E5  
 Base Peak m/z= 256.21477-256.21733  
 F: FTMS + p ESI Full ms  
 [100.00-1500.00] MS Hololenasp\_HDX

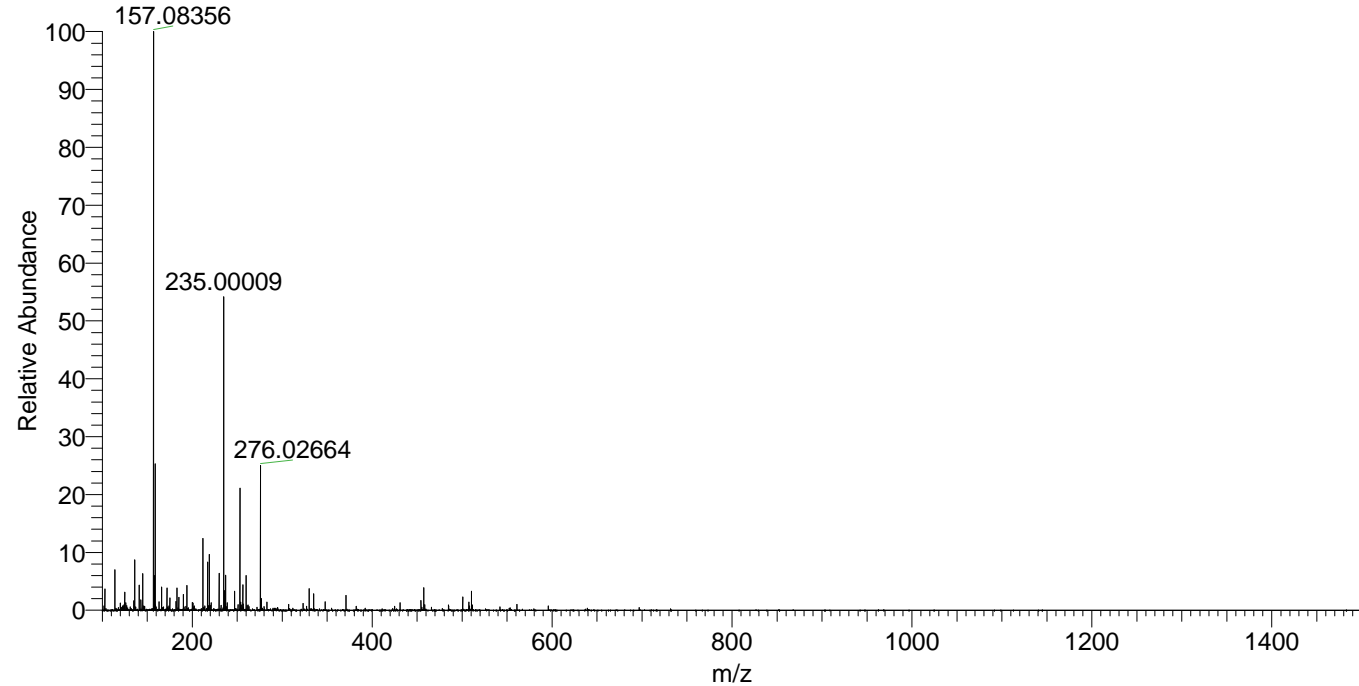


NL: 4.91E3  
 Base Peak m/z= 625.41401-625.42027  
 F: FTMS + p ESI Full ms  
 [100.00-1500.00] MS Hololenasp\_HDX

Hololenasp\_HDX#1623 RT: 9.99  
 T: FTMS + p ESI Full ms [100.00-1500.00]  
 m/z= 510.00000-511.00000

m/z	Intensity	Relative	Delta (ppm)	Composition
510.41763	617376.1	100.00	0.36	C <sub>27</sub> H <sub>44</sub> <sup>2</sup> H <sub>5</sub> O <sub>3</sub> N <sub>6</sub>
			-2.67	C <sub>27</sub> H <sub>46</sub> <sup>2</sup> H <sub>4</sub> O <sub>3</sub> N <sub>6</sub>
			3.39	C <sub>27</sub> H <sub>42</sub> <sup>2</sup> H <sub>6</sub> O <sub>3</sub> N <sub>6</sub>

Hololenasp\_HDX #1623 RT: 9.99 AV: 1 NL: 1.82E7  
 T: FTMS + p ESI Full ms [100.00-1500.00]



Hololenasp\_HDX #1623 RT: 9.99 AV: 1 NL: 6.00E5  
 T: FTMS + p ESI Full ms [100.00-1500.00]

