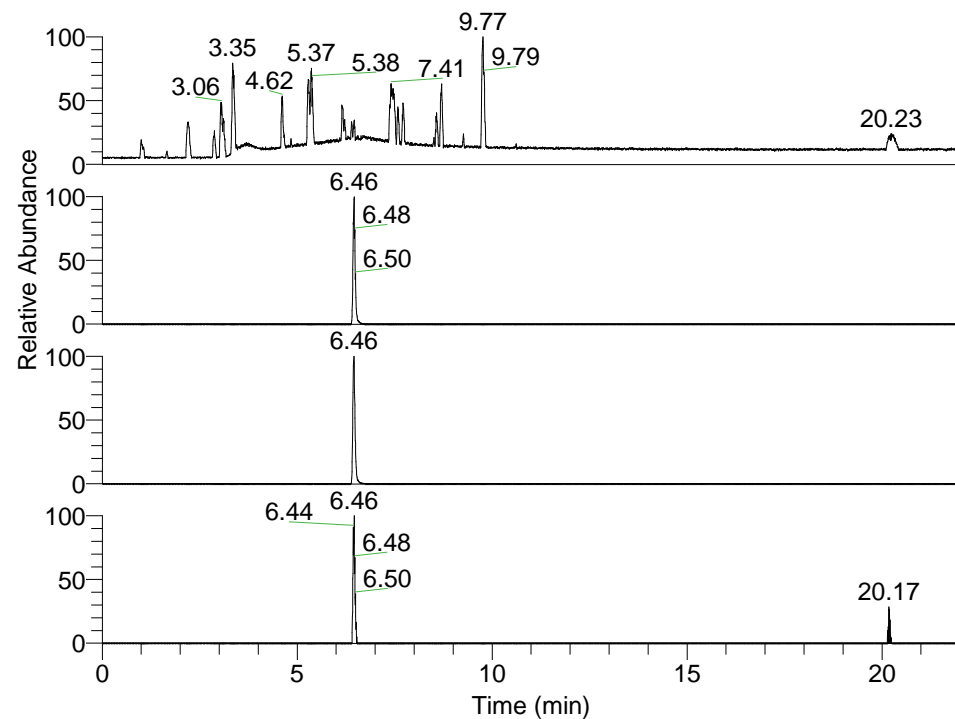


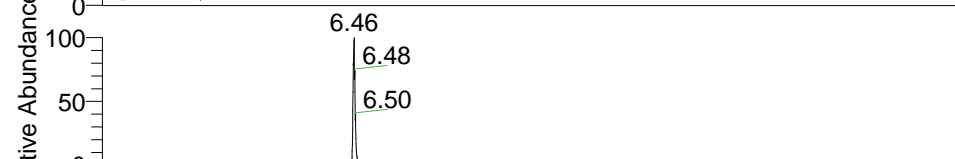
RT: 0.00 - 22.01



NL: 1.37E8
 Base Peak m/z=
 100.00000-1500.00000 F: FTMS + p
 ESI Full ms [100.00-1500.00] MS
 Hololenasp_HDX

Hololenasp_HDX#1032 RT: 6.46
 T: FTMS + p ESI Full ms [100.00-1500.00]
 m/z= 511.00000-512.00000

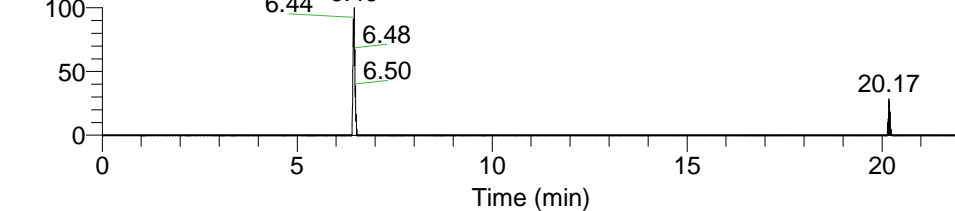
m/z	Intensity	Relative	Delta (ppm)	Composition
511.42380	6932572.5	100.00	0.14	C ₂₇ H ₄₃ ² H ₆ O ₃ N ₆
			-2.89	C ₂₇ H ₄₅ ² H ₅ O ₃ N ₆
			3.17	C ₂₇ H ₄₁ ² H ₇ O ₃ N ₆



NL: 6.93E6
 Base Peak m/z= 511.42172-511.42684
 F: FTMS + p ESI Full ms
 [100.00-1500.00] MS Hololenasp_HDX

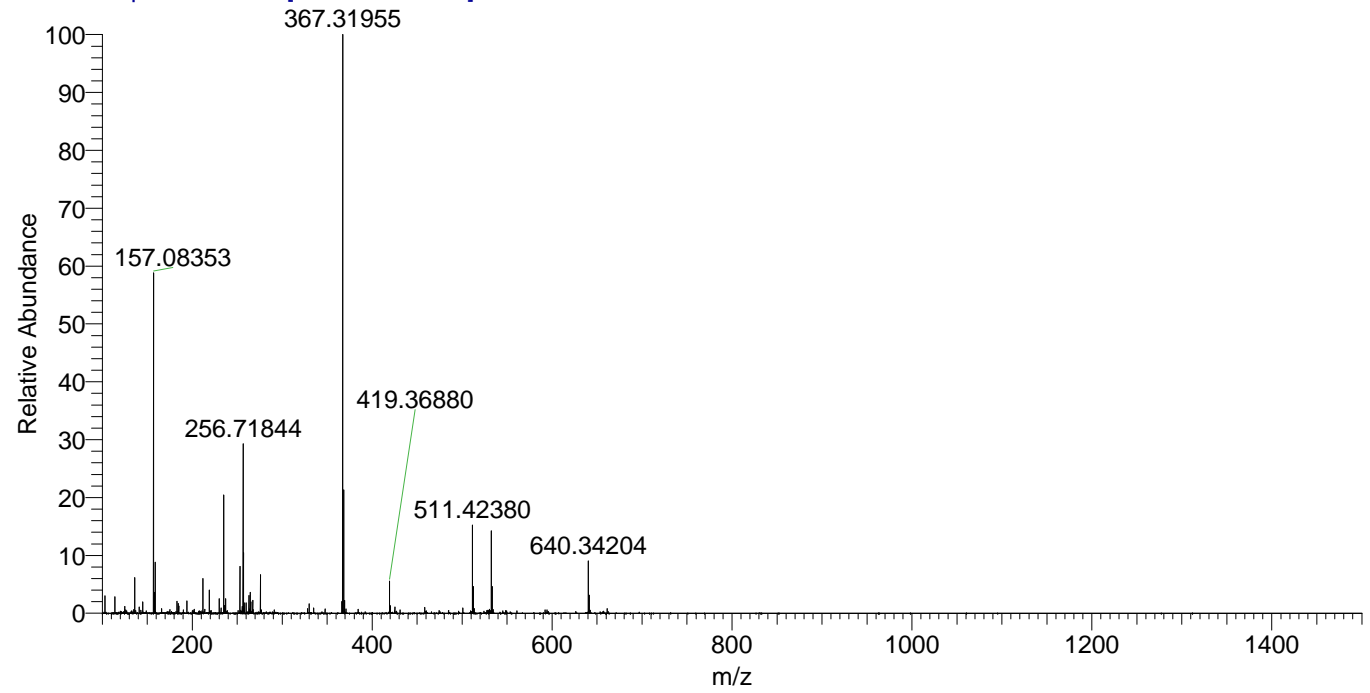


NL: 1.45E7
 Base Peak m/z= 256.71791-256.72047
 F: FTMS + p ESI Full ms
 [100.00-1500.00] MS Hololenasp_HDX



NL: 1.37E5
 Base Peak m/z= 626.42029-626.42655
 F: FTMS + p ESI Full ms
 [100.00-1500.00] MS Hololenasp_HDX

Hololenasp_HDX #1032 RT: 6.46 AV: 1 NL: 4.55E7
 T: FTMS + p ESI Full ms [100.00-1500.00]



Hololenasp_HDX #1032 RT: 6.46 AV: 1 NL: 6.93E6
 T: FTMS + p ESI Full ms [100.00-1500.00]

