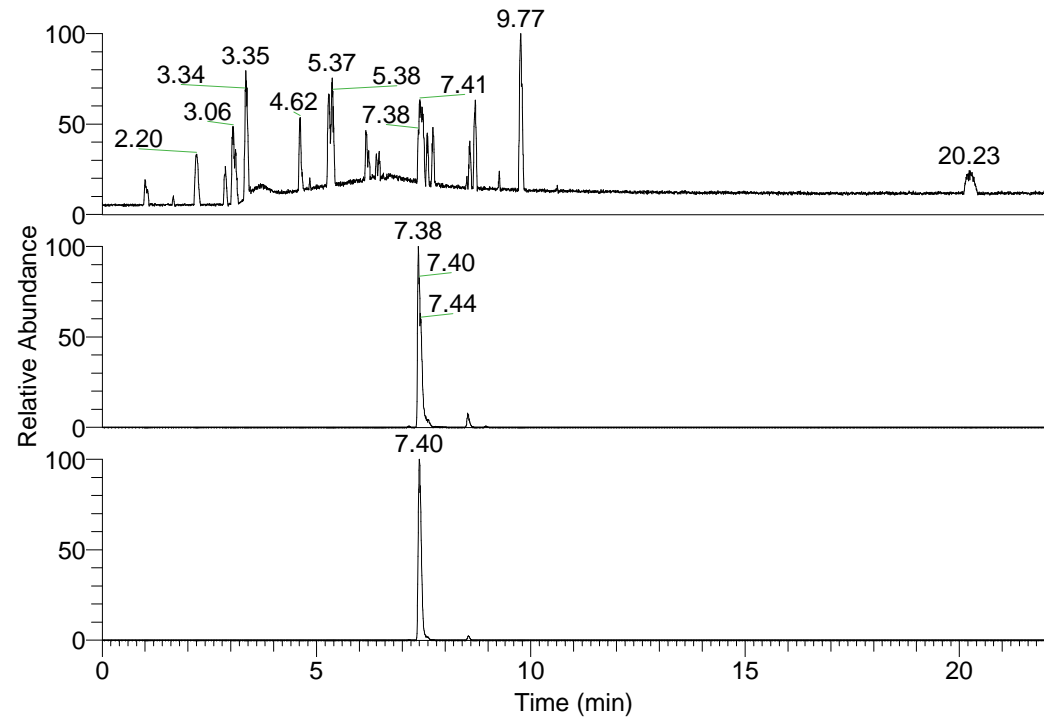


RT: 0.00 - 22.01



NL: 1.37E8
Base Peak m/z=
100.00000-1500.00000 F:
FTMS + p ESI Full ms
[100.00-1500.00] MS
Hololenasp_HDX

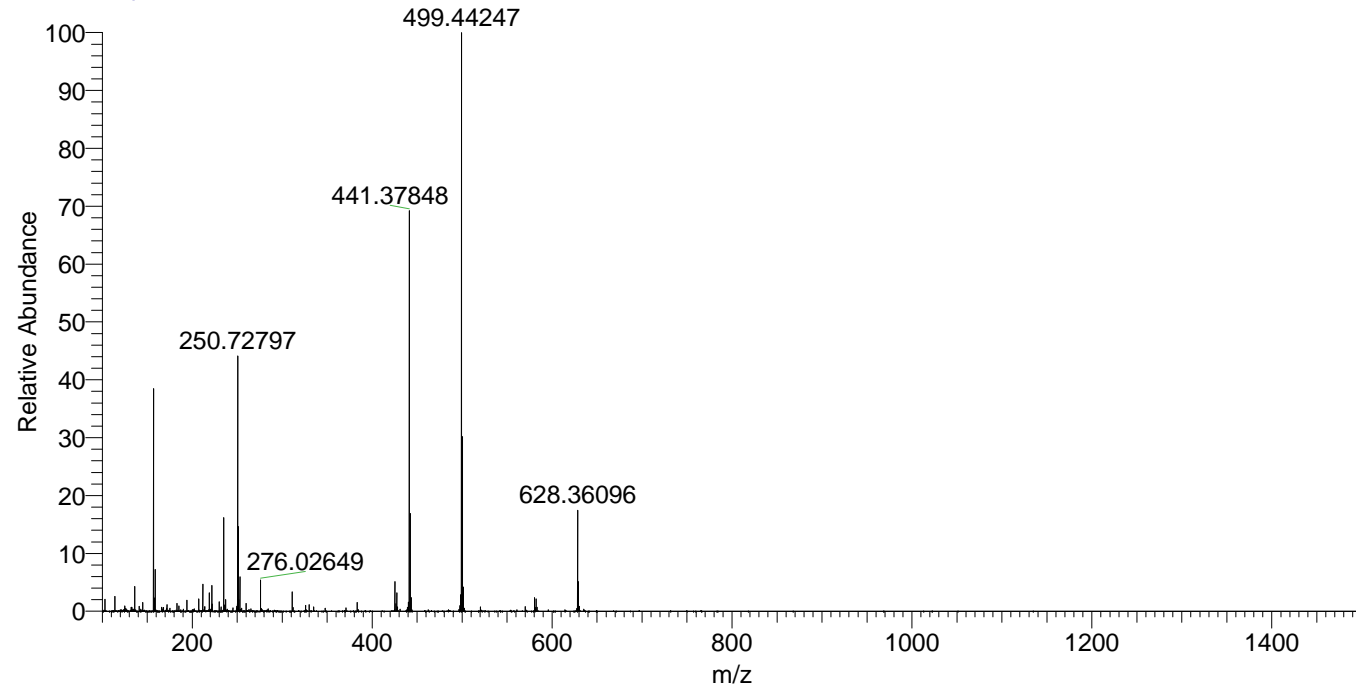
Hololenasp_HDX#1185 RT: 7.38
T: FTMS + p ESI Full ms [100.00-1500.00]
m/z= 499.00000-500.00000

| m/z | Intensity | Relative | Delta (ppm) | Composition |
|-----------|------------|----------|-------------|--|
| 499.44247 | 64015088.0 | 100.00 | -0.83 | C ₂₆ H ₃₉ ² H ₉ O ₂ N ₇ |
| | | | 2.27 | C ₂₆ H ₃₇ ² H ₁₀ O ₂ N ₇ |
| | | | -3.93 | C ₂₆ H ₄₁ ² H ₈ O ₂ N ₇ |

NL: 6.40E7
Base Peak m/z=
499.44094-499.44594 F: FTMS
+ p ESI Full ms
[100.00-1500.00] MS
Hololenasp_HDX

NL: 3.95E7
Base Peak m/z=
250.72752-250.73002 F: FTMS
+ p ESI Full ms
[100.00-1500.00] MS
Hololenasp_HDX

Hololenasp_HDX #1185 RT: 7.38 AV: 1 NL: 6.31E7
T: FTMS + p ESI Full ms [100.00-1500.00]



Hololenasp_HDX #1185 RT: 7.38 AV: 1 NL: 6.31E7
T: FTMS + p ESI Full ms [100.00-1500.00]

