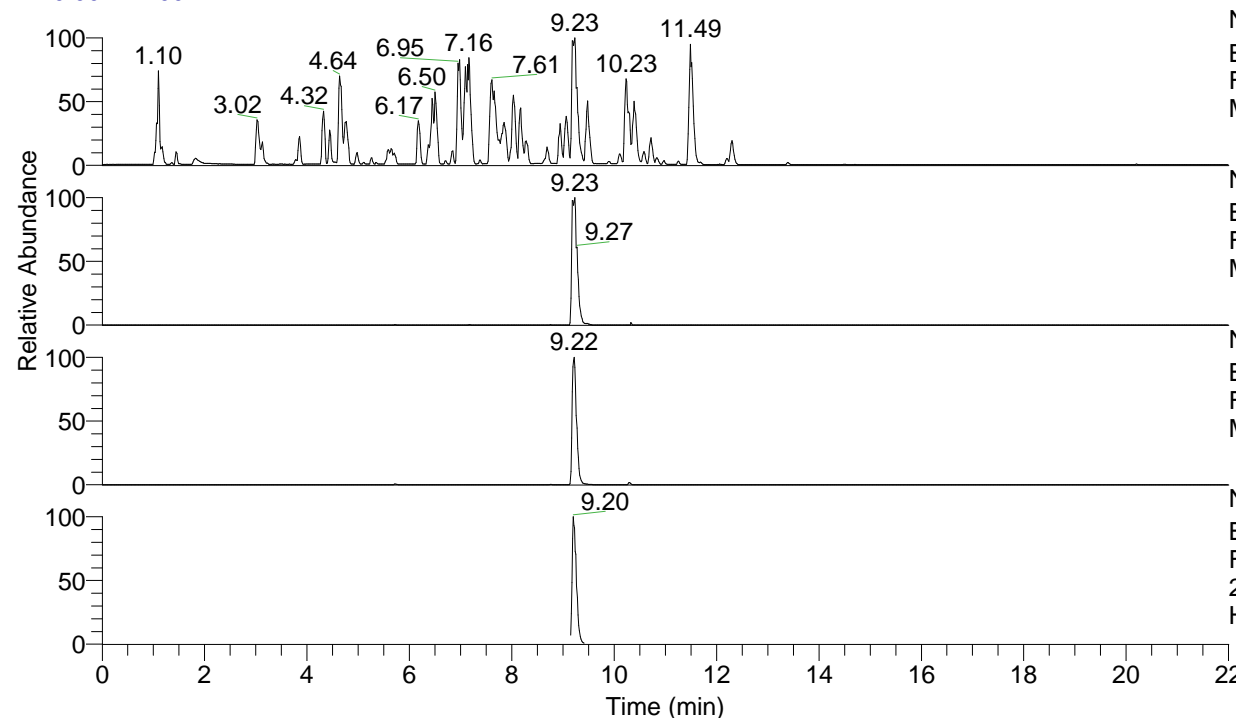


RT: 0.00 - 22.00



NL: 4.98E7  
 Base Peak m/z= 100.00000-1500.00000 F:  
 FTMS + p ESI Full ms [100.00-1500.00]  
 MS Hololenasp

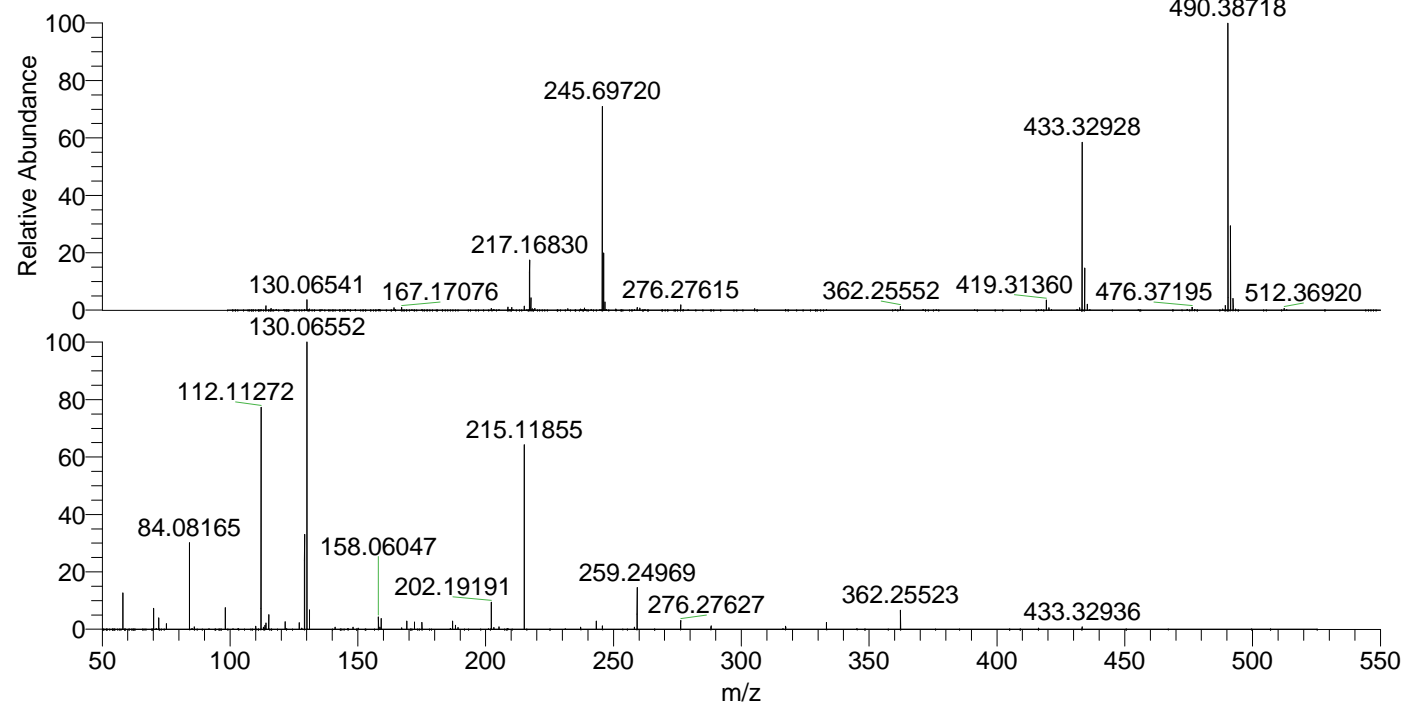
NL: 4.98E7  
 Base Peak m/z= 490.38450-490.38940 F:  
 FTMS + p ESI Full ms [100.00-1500.00]  
 MS Hololenasp

NL: 3.83E7  
 Base Peak m/z= 245.69616-245.69862 F:  
 FTMS + p ESI Full ms [100.00-1500.00]  
 MS Hololenasp

NL: 5.11E6  
 Base Peak m/z= 50.00000-1500.00000 F:  
 FTMS + p ESI d Full ms2  
 245.70@hcd35.00 [50.00-520.00] MS  
 Hololenasp

Hololenasp#3660-3718 RT: 9.15-9.28 AV:  
 F: FTMS + p ESI d Full ms2 245.70@h ...  
 m/z= 50.00000-1000.00000

m/z	Intensity	Relative
58.06612	352136.3	12.16
70.06603	215920.5	7.45
72.08170	117918.6	4.07
75.09261	61397.2	2.12
84.08161	911232.1	31.46
86.06096	24299.7	0.84
98.09727	236667.7	8.17
110.09710	29846.2	1.03
112.11277	2390406.5	82.53
113.10808	23214.8	0.80
113.61818	43587.0	1.50
114.09198	64544.1	2.23
115.12366	159033.6	5.49
121.61557	74787.5	2.58
127.12356	65482.8	2.26
129.13917	964405.3	33.30
130.06564	2896382.8	100.00
130.12879	67573.5	2.33
131.11836	196596.8	6.79
141.13942	20601.9	0.71
148.14500	19842.6	0.69
158.06057	121877.8	4.21
158.65774	19548.8	0.67
159.09222	110970.9	3.83
167.17096	15118.0	0.52
169.17071	81719.0	2.82
172.18149	77442.9	2.67
175.06369	74914.8	2.59
175.08711	18311.2	0.63
187.08723	83797.6	2.89
188.17665	40004.8	1.38
189.20804	22179.1	0.77
202.19187	271815.8	9.38
203.22346	20382.6	0.70
205.20280	27001.7	0.93
215.11864	1940589.3	67.00
237.18430	22837.3	0.79
243.25537	80099.1	2.77
245.69741	34274.9	1.18
258.16156	20215.8	0.70
259.25010	428682.1	14.80
276.27666	90093.5	3.11
288.17135	33130.4	1.14
317.33931	28597.8	0.99
333.33418	67502.1	2.33
362.25564	192361.9	6.64
433.32925	23593.8	0.81



NL: 4.98E7  
 Hololenasp#3697 RT:  
 9.23 AV: 1 T: FTMS + p  
 ESI Full ms  
 [100.00-1500.00]

NL: 3.37E6  
 Hololenasp#3664-3715  
 RT: 9.16-9.27 AV: 9 F:  
 FTMS + p ESI d Full ms2  
 245.70@hcd35.00  
 [50.00-520.00]