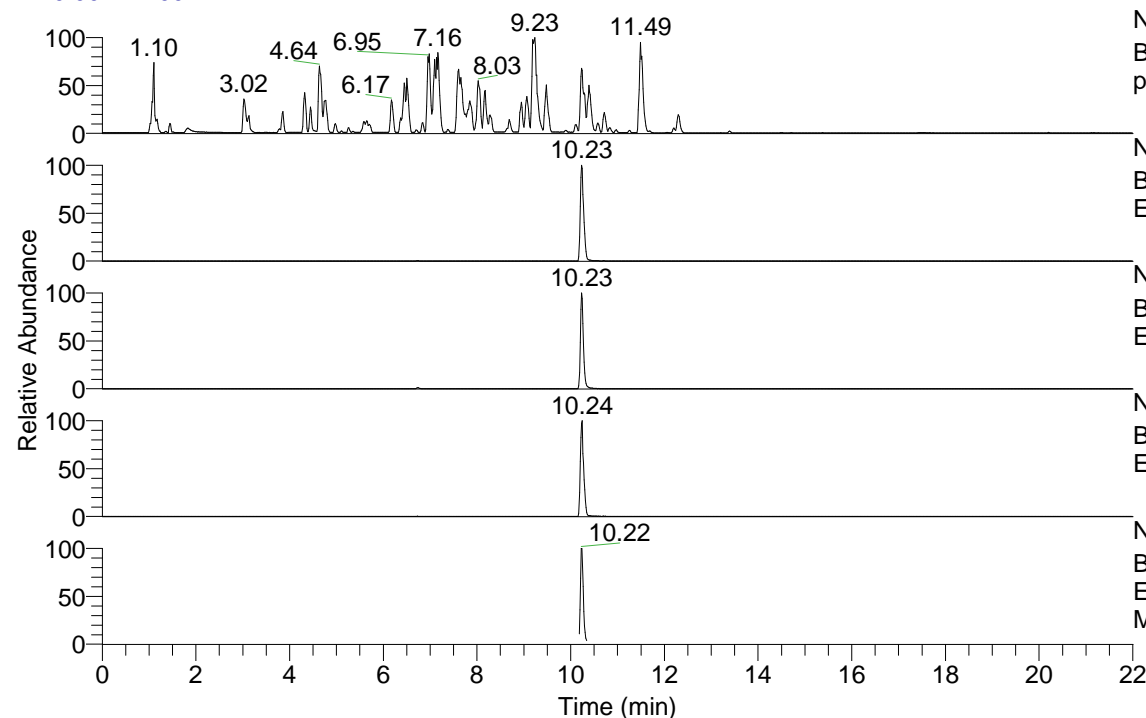


RT: 0.00 - 22.00



NL: 4.98E7
 Base Peak m/z= 100.00000-1500.00000 F: FTMS + p ESI Full ms [100.00-1500.00] MS Hololenasp

NL: 3.38E7
 Base Peak m/z= 489.38925-489.39415 F: FTMS + p ESI Full ms [100.00-1500.00] MS Hololenasp

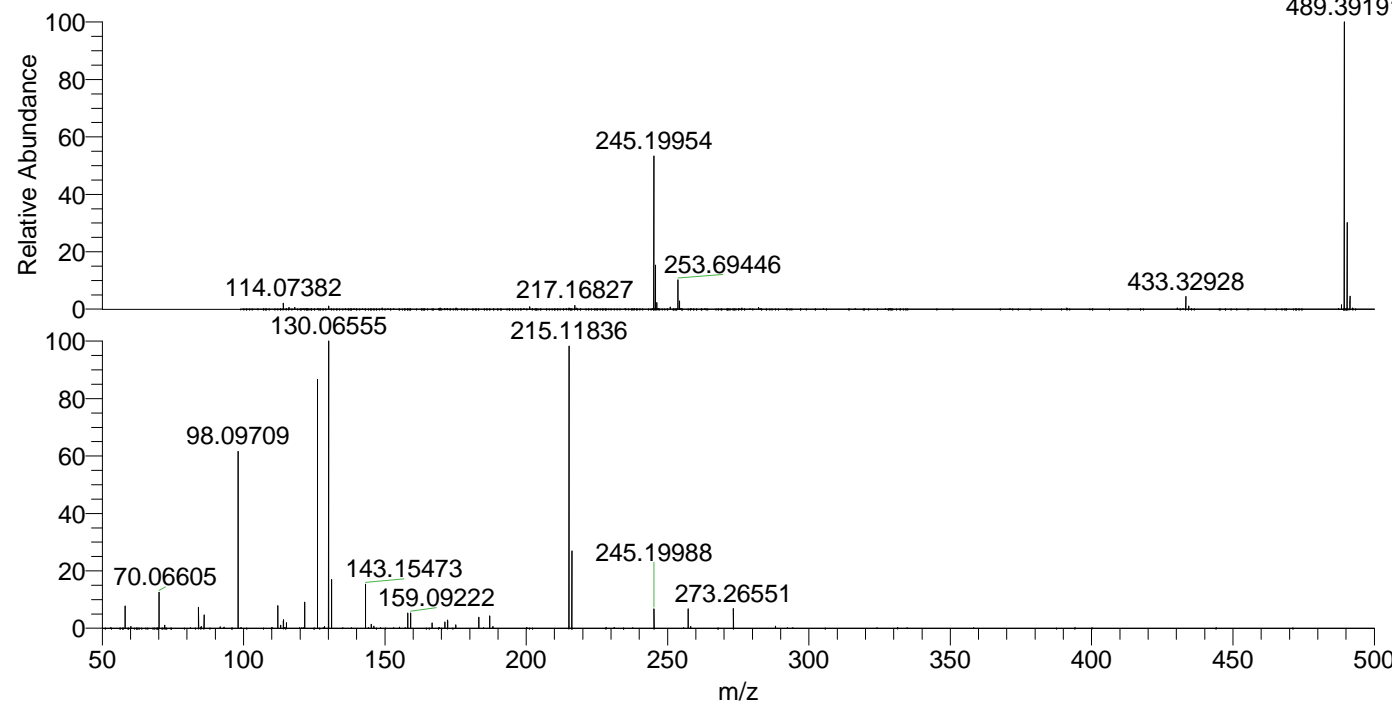
NL: 1.91E7
 Base Peak m/z= 245.19853-245.20099 F: FTMS + p ESI Full ms [100.00-1500.00] MS Hololenasp

NL: 1.45E6
 Base Peak m/z= 603.38154-603.38758 F: FTMS + p ESI Full ms [100.00-1500.00] MS Hololenasp

NL: 1.88E6
 Base Peak m/z= 50.00000-1500.00000 F: FTMS + p ESI d Full ms2 245.20@hcd35.00 [50.00-520.00] MS Hololenasp

Hololenasp#4084-4121 RT: 10.20-10.28
 F: FTMS + p ESI d Full ms2 245.20@h ...
 m/z= 50.00000-1000.00000

m/z	Intensity	Relative
58.06614	95202.6	7.72
60.08171	7835.8	0.64
70.06605	155231.8	12.59
72.08165	12460.6	1.01
84.08163	90299.4	7.32
85.07687	7204.5	0.58
86.06088	21761.0	1.76
86.09724	56590.5	4.59
98.09709	756429.3	61.35
112.11262	98104.4	7.96
113.10791	13151.7	1.07
114.09198	35826.5	2.91
115.12360	24091.3	1.95
121.63369	111849.3	9.07
126.12822	1069505.4	86.74
128.62372	7777.4	0.63
130.06555	1225241.8	99.37
131.11835	212028.3	17.20
143.15473	190266.6	15.43
145.17030	16716.5	1.36
146.06056	8612.0	0.70
158.06050	64549.2	5.23
159.09222	67099.1	5.44
166.67322	22136.1	1.80
171.18605	26109.7	2.12
172.18118	34709.4	2.81
175.06329	14415.3	1.17
175.08711	14664.5	1.19
183.18629	47819.4	3.88
187.08732	53776.5	4.36
188.17640	8104.4	0.66
215.11836	1233058.1	100.00
216.20762	330521.9	26.81
245.19988	83256.4	6.75
257.27036	84570.5	6.86
258.16103	7193.7	0.58
273.26551	84858.1	6.88
288.17120	9765.8	0.79



NL: 3.37E7
 Hololenasp#4099 RT: 10.23 AV: 1 T: FTMS + p ESI Full ms [100.00-1500.00]

NL: 1.23E6
 Hololenasp#4081-4123 RT: 10.20-10.28 AV: 7 F: FTMS + p ESI d Full ms2 245.20@hcd35.00 [50.00-520.00]