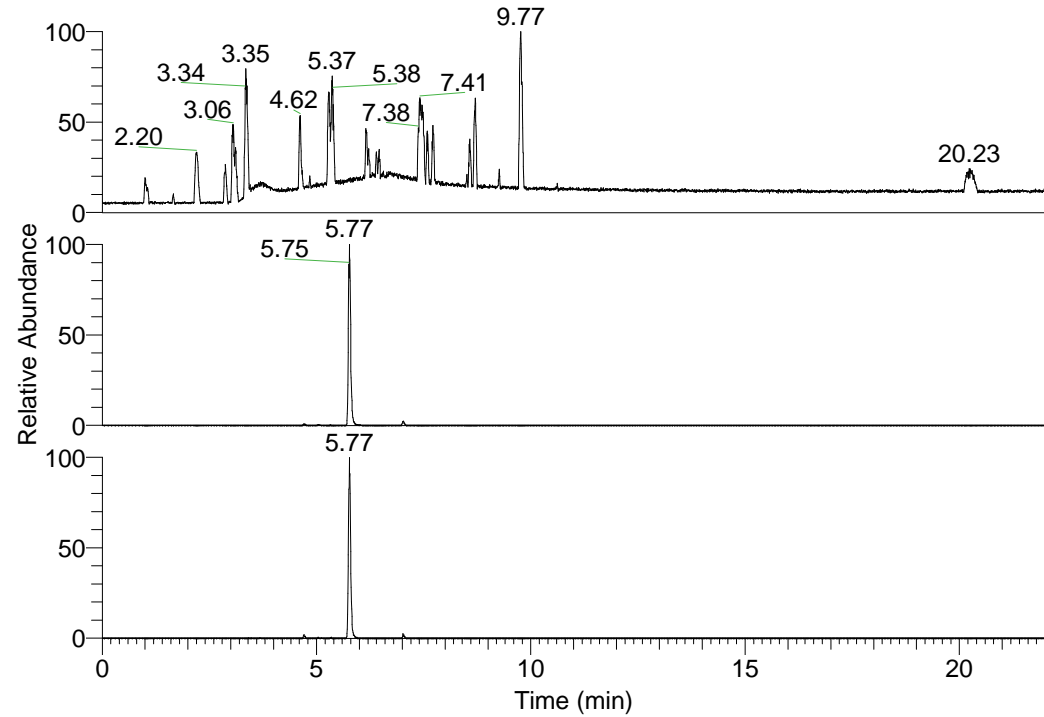


RT: 0.00 - 22.01



NL: 1.37E8  
Base Peak m/z=  
100.00000-1500.00000 F:  
FTMS + p ESI Full ms  
[100.00-1500.00] MS  
Hololenasp\_HDX

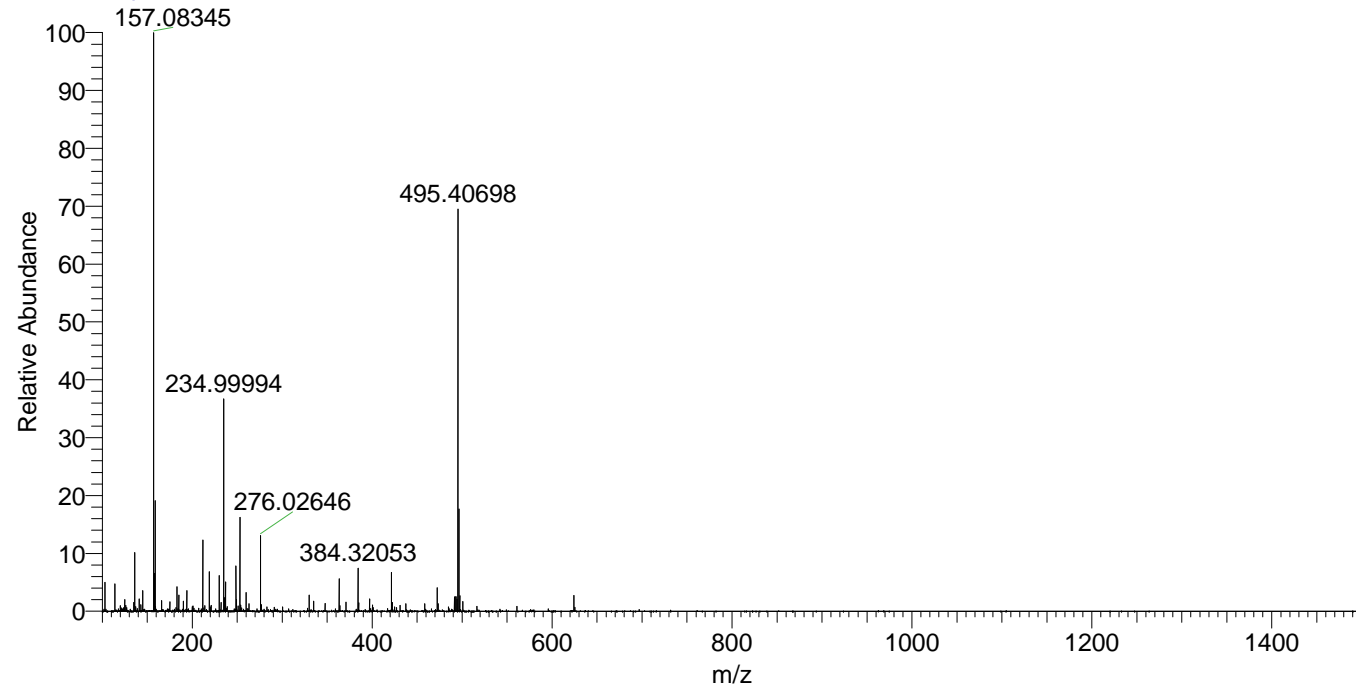
NL: 1.75E7  
Base Peak m/z=  
495.40543-495.41039 F: FTMS  
+ p ESI Full ms  
[100.00-1500.00] MS  
Hololenasp\_HDX

NL: 2.08E6  
Base Peak m/z=  
248.70977-248.71225 F: FTMS  
+ p ESI Full ms  
[100.00-1500.00] MS  
Hololenasp\_HDX

Hololenasp\_HDX#915 RT: 5.77  
T: FTMS + p ESI Full ms [100.00-1500.00]  
m/z= 495.00000-496.00000

m/z	Intensity	Relative	Delta (ppm)	Composition
495.40698	16343112.0	100.00	-0.77	C <sub>23</sub> H <sub>35</sub> <sup>2</sup> H <sub>10</sub> O <sub>5</sub> N <sub>6</sub>
			2.36	C <sub>23</sub> H <sub>33</sub> <sup>2</sup> H <sub>11</sub> O <sub>5</sub> N <sub>6</sub>
			-3.89	C <sub>23</sub> H <sub>37</sub> <sup>2</sup> H <sub>9</sub> O <sub>5</sub> N <sub>6</sub>

Hololenasp\_HDX #915 RT: 5.77 AV: 1 NL: 2.35E7  
T: FTMS + p ESI Full ms [100.00-1500.00]



Hololenasp\_HDX #915 RT: 5.77 AV: 1 NL: 1.63E7  
T: FTMS + p ESI Full ms [100.00-1500.00]

