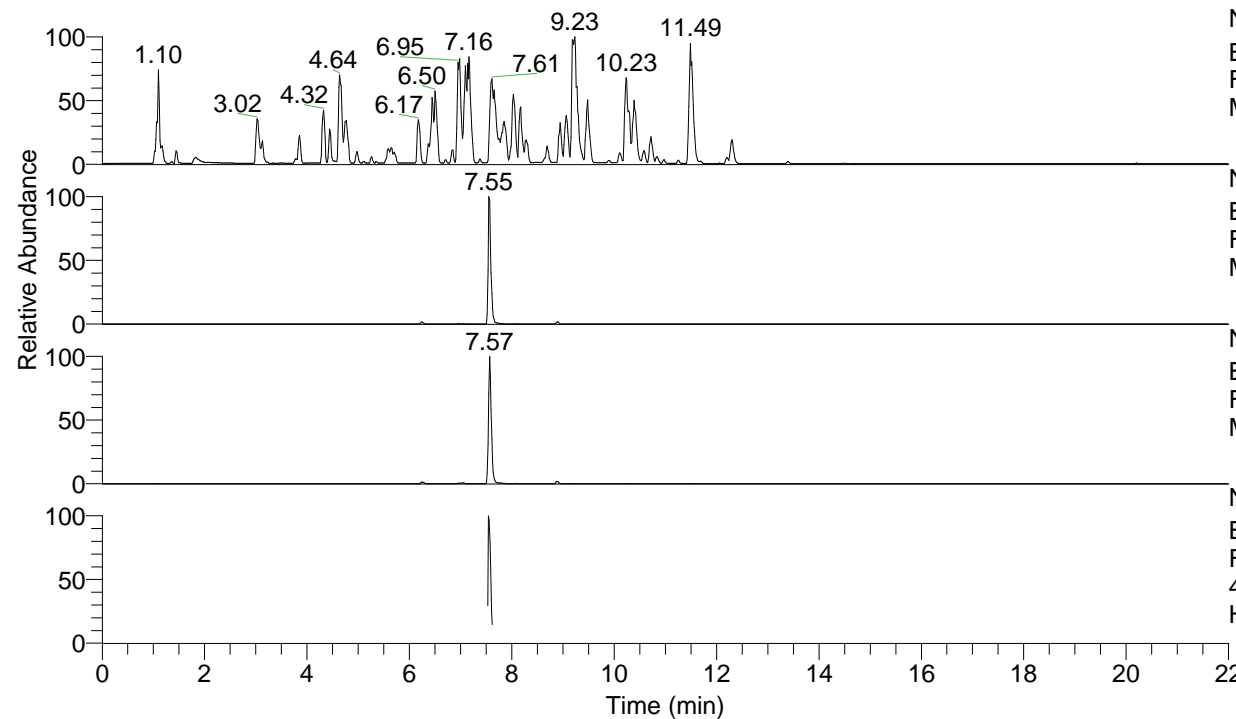


RT: 0.00 - 22.00



NL: 4.98E7
 Base Peak m/z= 100.00000-1500.00000 F:
 FTMS + p ESI Full ms [100.00-1500.00]
 MS Hololenasp

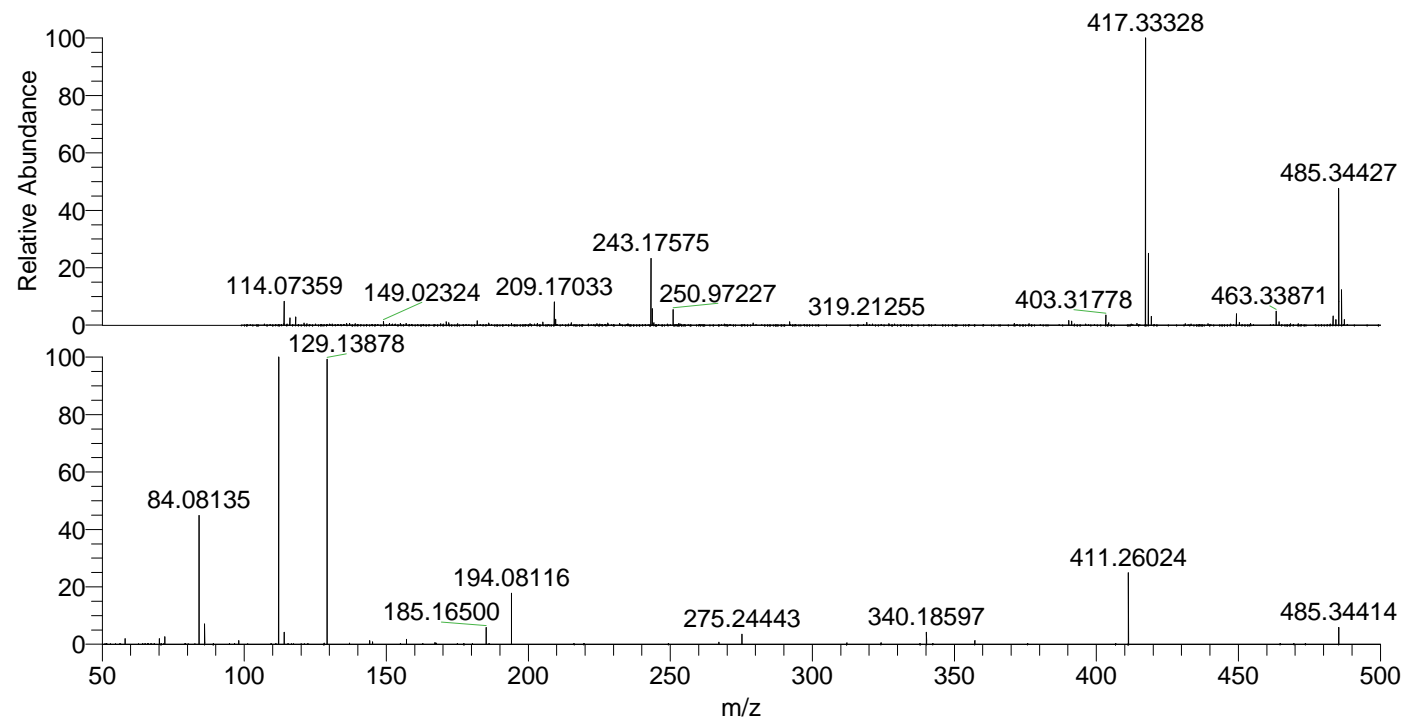
NL: 3.91E6
 Base Peak m/z= 485.34271-485.34757 F:
 FTMS + p ESI Full ms [100.00-1500.00]
 MS Hololenasp

NL: 2.81E6
 Base Peak m/z= 243.17526-243.17770 F:
 FTMS + p ESI Full ms [100.00-1500.00]
 MS Hololenasp

NL: 5.12E5
 Base Peak m/z= 50.00000-1500.00000 F:
 FTMS + p ESI d Full ms2
 485.34@hcd35.00 [50.00-515.00] MS
 Hololenasp

Hololenasp#3011-3033 RT: 7.53-7.59
 F: FTMS + p ESI d Full ms2 485.34 ...
 m/z= 50.00000-1000.00000

m/z	Intensity	Relative
58.06593	6976.7	2.00
70.06584	6722.6	1.93
72.08147	9272.2	2.66
84.08135	160302.9	46.04
86.06056	25450.8	7.31
98.09702	4579.6	1.32
112.11241	347864.8	99.90
114.09173	14701.4	4.22
129.13878	348215.0	100.00
144.12545	4555.9	1.31
145.13382	2734.7	0.79
157.13393	5992.2	1.72
167.15360	1980.4	0.57
185.16500	20823.6	5.98
194.08116	62625.9	17.98
267.13413	2620.5	0.75
275.24443	12519.3	3.60
312.15378	1903.5	0.55
340.18597	15286.7	4.39
357.21361	4352.6	1.25
411.26024	87412.7	25.10
485.34414	20931.1	6.01



NL: 8.20E6
 Hololenasp#3019 RT:
 7.55 AV: 1 T: FTMS + p
 ESI Full lock ms
 [100.00-1500.00]

NL: 3.48E5
 Hololenasp#3011-3038
 RT: 7.53-7.59 AV: 5 F:
 FTMS + p ESI d Full ms2
 485.34@hcd35.00
 [50.00-515.00]