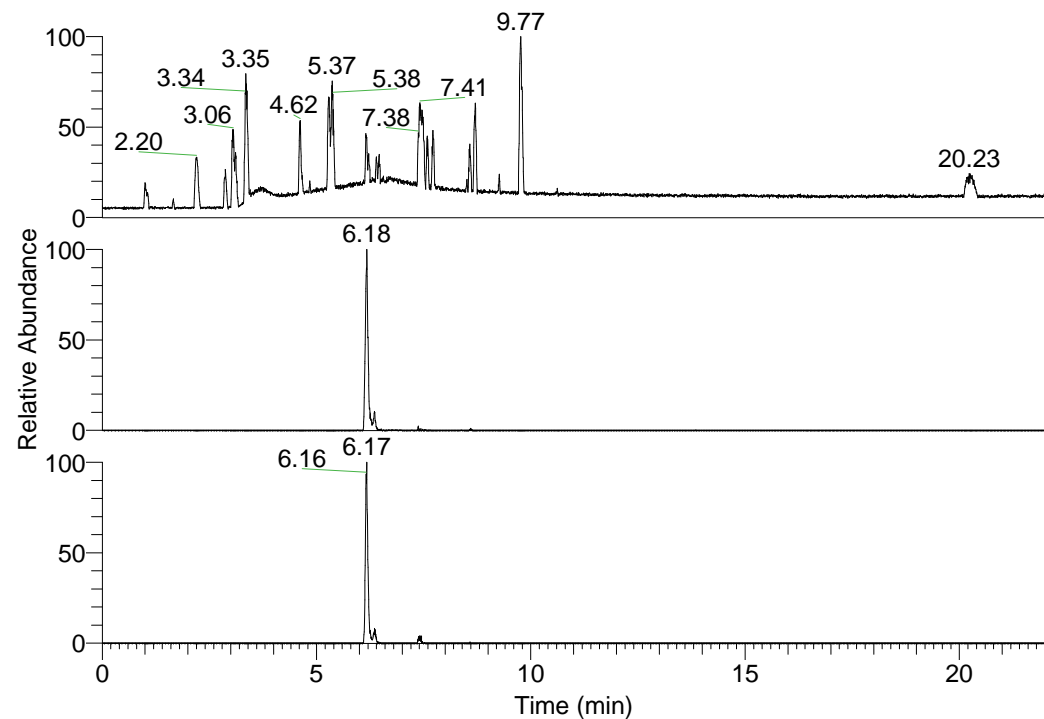


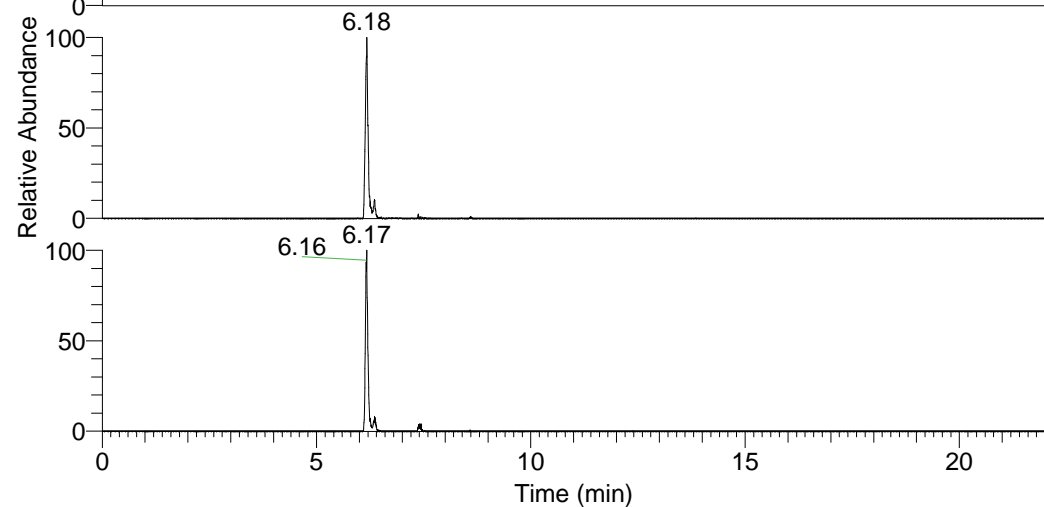
RT: 0.00 - 22.01



NL: 1.37E8
Base Peak m/z=
100.00000-1500.00000 F:
FTMS + p ESI Full ms
[100.00-1500.00] MS
Hololenasp_HDX

Hololenasp_HDX#983 RT: 6.18
T: FTMS + p ESI Full ms [100.00-1500.00]
m/z= 483.00000-484.00000

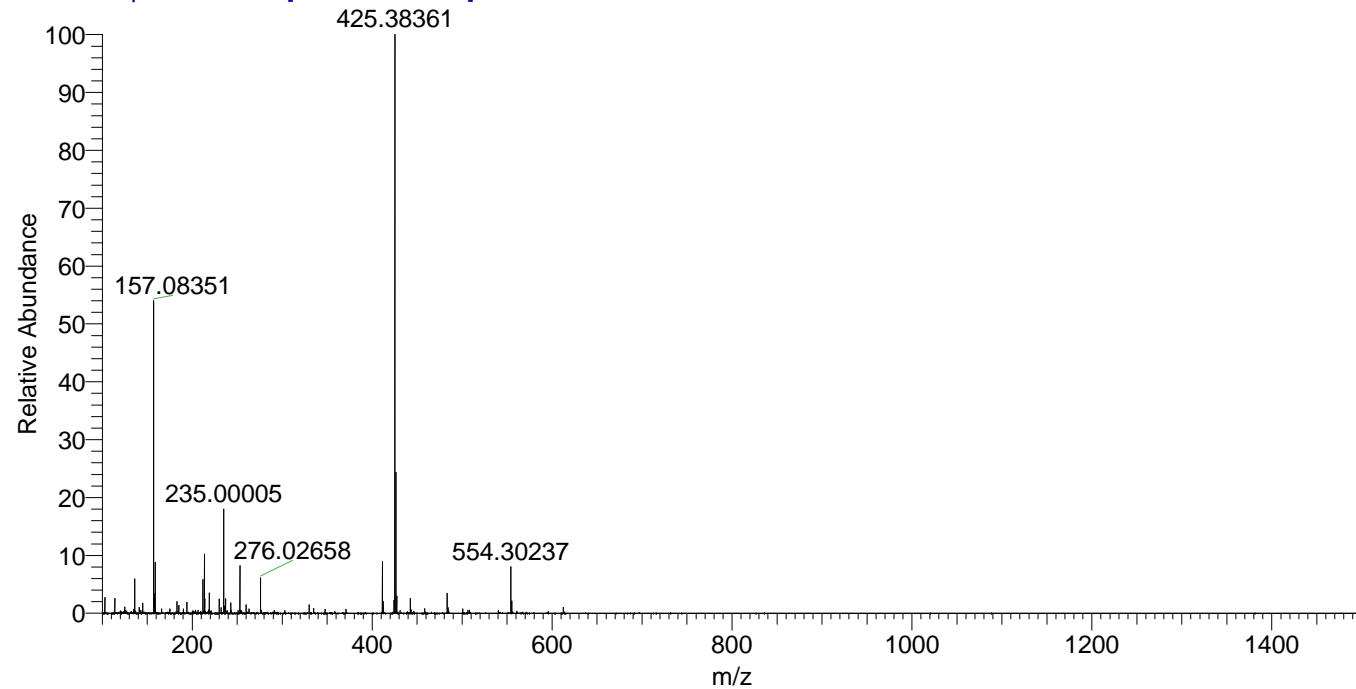
m/z	Intensity	Relative	Delta (ppm)	Composition
483.44788	1737914.6	100.00	-0.21	C ₂₆ H ₃₉ ² H ₉ ON ₇
			2.99	C ₂₆ H ₃₇ ² H ₁₀ ON ₇
			-3.41	C ₂₆ H ₄₁ ² H ₈ ON ₇



NL: 2.04E6
Base Peak m/z=
483.44611-483.45095 F: FTMS
+ p ESI Full ms
[100.00-1500.00] MS
Hololenasp_HDX

NL: 1.25E6
Base Peak m/z=
242.73010-242.73252 F: FTMS
+ p ESI Full ms
[100.00-1500.00] MS
Hololenasp_HDX

Hololenasp_HDX #983 RT: 6.18 AV: 1 NL: 4.89E7
T: FTMS + p ESI Full ms [100.00-1500.00]



Hololenasp_HDX #983 RT: 6.18 AV: 1 NL: 1.69E6
T: FTMS + p ESI Full ms [100.00-1500.00]

