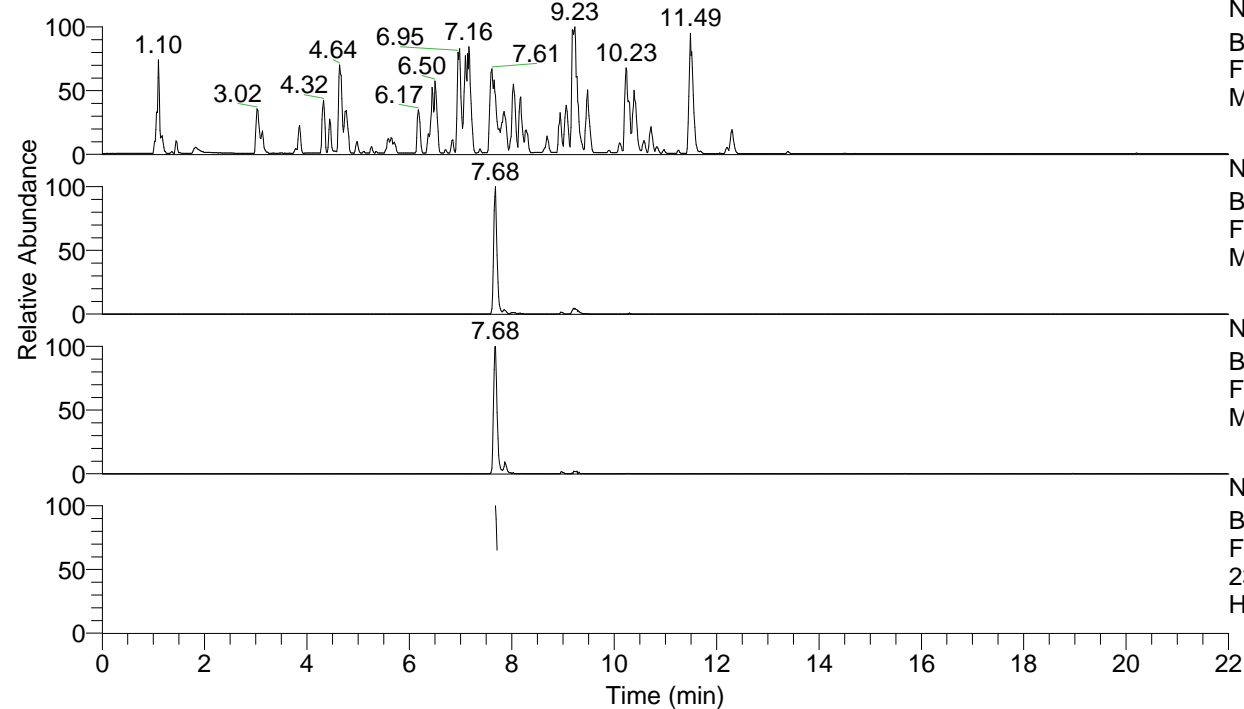


RT: 0.00 - 22.00



NL: 4.98E7
 Base Peak m/z= 100.00000-1500.00000 F:
 FTMS + p ESI Full ms [100.00-1500.00]
 MS Hololenasp

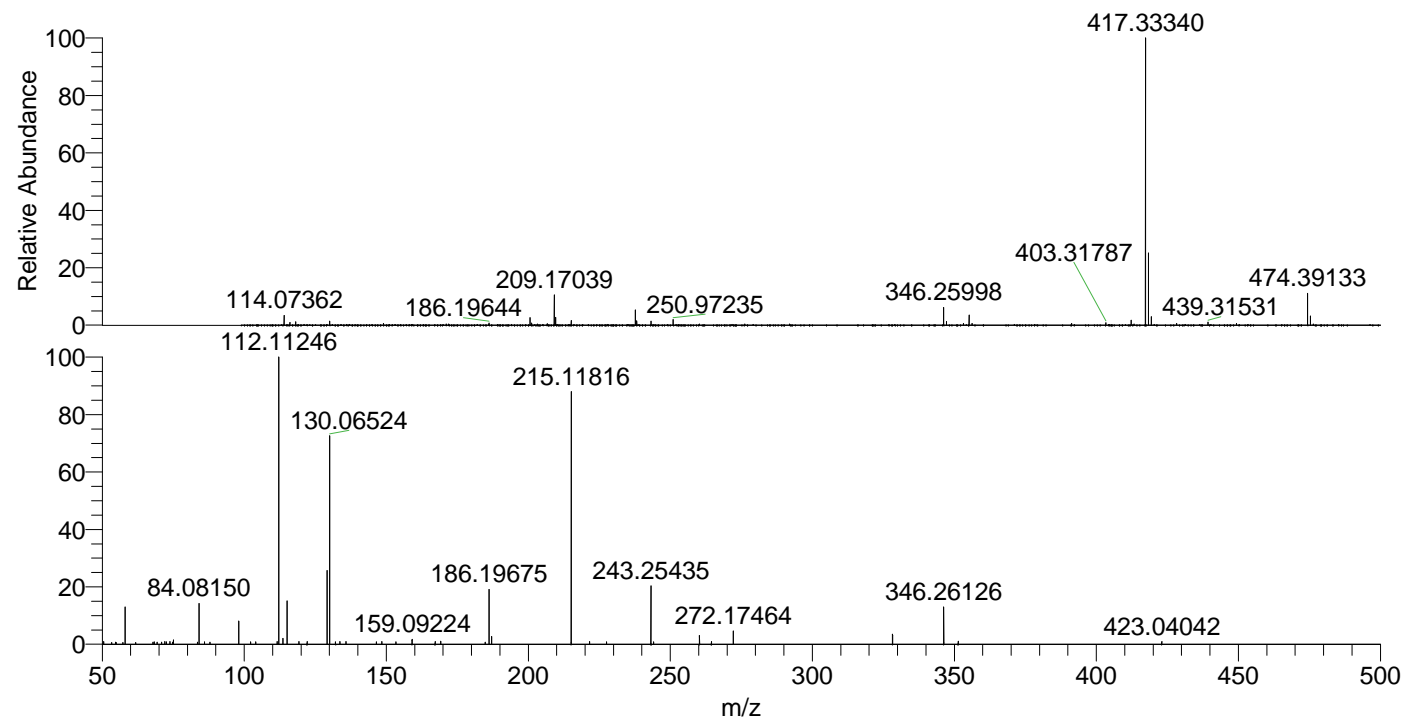
NL: 2.60E6
 Base Peak m/z= 474.38966-474.39440 F:
 FTMS + p ESI Full ms [100.00-1500.00]
 MS Hololenasp

NL: 1.26E6
 Base Peak m/z= 237.69874-237.70112 F:
 FTMS + p ESI Full ms [100.00-1500.00]
 MS Hololenasp

NL: 1.45E5
 Base Peak m/z= 50.00000-1500.00000 F:
 FTMS + p ESI d Full ms2
 237.70@hcd35.00 [50.00-505.00] MS
 Hololenasp

Hololenasp#3072-3084 RT: 7.68-7.71
 F: FTMS + p ESI d Full ms2 237.70 ...
 m/z= 50.00000-1000.00000

m/z	Intensity	Relative
50.55478	1093.1	0.95
54.70912	830.1	0.72
54.93433	751.7	0.65
58.06599	14605.8	12.67
61.78311	750.1	0.65
67.85184	854.9	0.74
68.27544	935.1	0.81
69.34594	787.7	0.68
70.93941	854.3	0.74
72.08146	1055.1	0.92
72.57309	918.5	0.80
73.88340	1027.9	0.89
74.78238	849.1	0.74
75.09252	1655.8	1.44
83.50788	829.6	0.72
84.08150	16012.1	13.89
86.01849	830.0	0.72
86.03972	955.7	0.83
87.94077	840.8	0.73
98.09709	9413.8	8.17
102.19262	999.3	0.87
104.06300	901.1	0.78
111.63233	1036.4	0.90
112.11246	115257.7	100.00
113.61797	2341.5	2.03
115.12341	17341.3	15.05
119.23297	1040.6	0.90
122.13156	1036.6	0.90
129.13866	29168.2	25.31
130.06524	82353.0	71.45
132.14996	946.9	0.82
133.63646	1111.3	0.96
135.86392	1051.5	0.91
146.56689	917.3	0.80
148.42538	1003.6	0.87
153.43610	1002.2	0.87
159.09224	1912.1	1.66
167.21124	1150.9	1.00
169.17054	1204.3	1.04
184.86939	883.2	0.77
186.19675	21494.4	18.65
187.08748	3087.9	2.68
215.11816	100739.2	87.40
221.58542	1049.3	0.91
227.56347	1007.1	0.87
243.16954	1039.3	0.90
243.25435	22881.4	19.85
244.13231	994.9	0.86
260.28079	3426.1	2.97
264.47767	1091.2	0.95
272.17464	5243.4	4.55
328.24840	3989.3	3.46
346.26126	14783.2	12.83
351.38093	1161.6	1.01
423.04042	1116.4	0.97



NL: 2.27E7
 Hololenasp#3073 RT:
 7.68 AV: 1 T: FTMS + p
 ESI Full ms
 [100.00-1500.00]

NL: 1.12E5
 Hololenasp#3055-3088
 RT: 7.68-7.71 AV: 3 F:
 FTMS + p ESI d Full ms2
 237.70@hcd35.00
 [50.00-505.00]