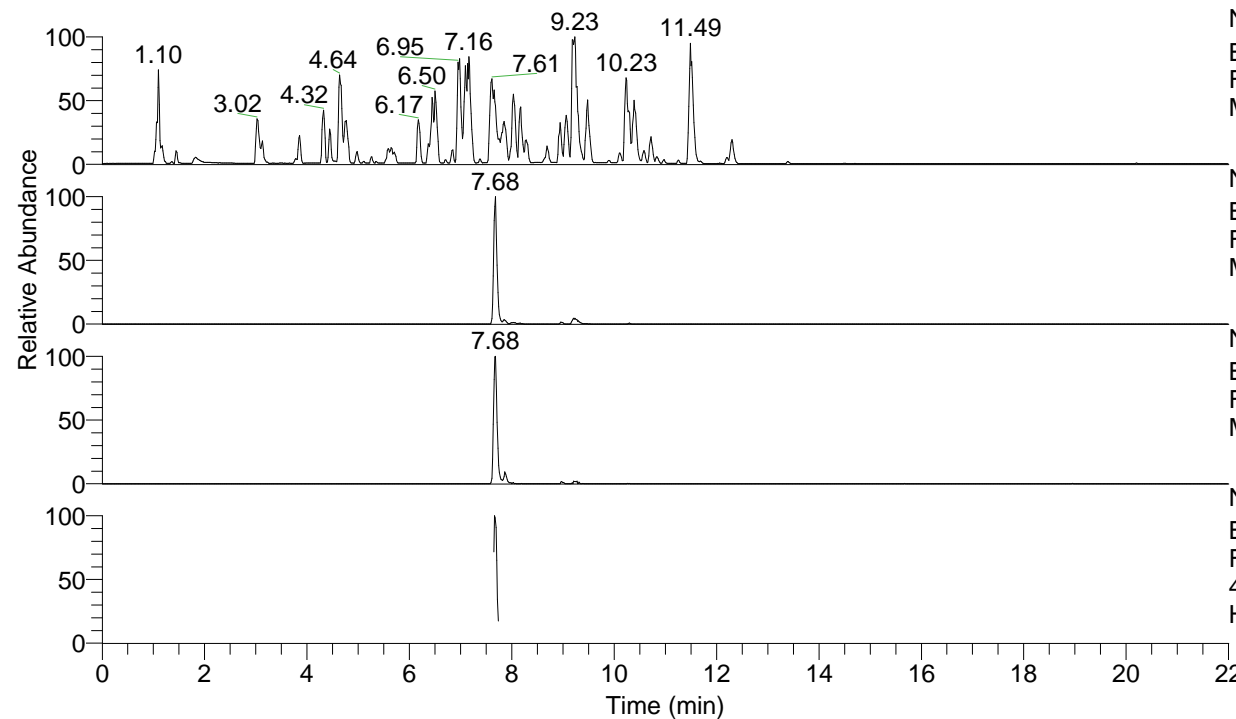


RT: 0.00 - 22.00



NL: 4.98E7
 Base Peak m/z= 100.00000-1500.00000 F:
 FTMS + p ESI Full ms [100.00-1500.00]
 MS Hololenasp

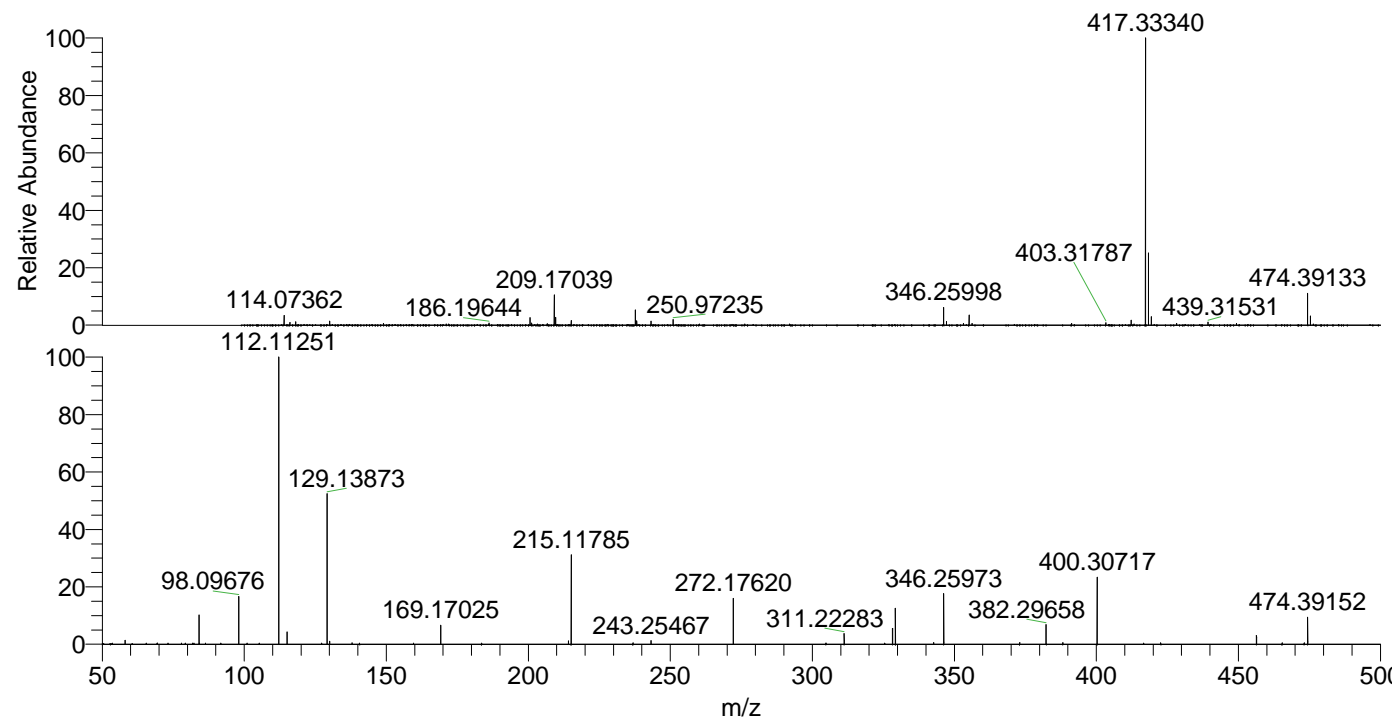
NL: 2.60E6
 Base Peak m/z= 474.38966-474.39440 F:
 FTMS + p ESI Full ms [100.00-1500.00]
 MS Hololenasp

NL: 1.26E6
 Base Peak m/z= 237.69874-237.70112 F:
 FTMS + p ESI Full ms [100.00-1500.00]
 MS Hololenasp

NL: 3.14E5
 Base Peak m/z= 50.00000-1500.00000 F:
 FTMS + p ESI d Full ms2
 474.39@hcd35.00 [50.00-500.00] MS
 Hololenasp

Hololenasp#3064-3081 RT: 7.66-7.70
 F: FTMS + p ESI d Full ms2 474.39 ...
 m/z= 50.00000-1000.00000

m/z	Intensity	Relative
58.06599	3523.6	1.36
84.08141	25921.4	10.01
98.09676	43003.0	16.60
112.11251	259015.8	100.00
115.12339	11261.8	4.35
129.13873	135923.1	52.48
130.06522	2793.0	1.08
169.17025	17093.3	6.60
214.13414	2897.0	1.12
215.11785	81163.9	31.34
243.25467	3380.8	1.31
272.17620	41502.6	16.02
311.22283	9821.5	3.79
328.25038	14787.4	5.71
329.23275	32371.3	12.50
342.71769	1425.7	0.55
346.25973	44943.7	17.35
373.01250	1672.3	0.65
382.29658	17533.8	6.77
388.19939	1332.8	0.51
400.30717	60730.9	23.45
456.38098	7708.5	2.98
465.45075	1297.3	0.50
474.39152	24847.6	9.59



NL: 2.27E7
 Hololenasp#3073 RT:
 7.68 AV: 1 T: FTMS + p
 ESI Full ms
 [100.00-1500.00]

NL: 2.55E5
 Hololenasp#3061-3083
 RT: 7.66-7.70 AV: 4 F:
 FTMS + p ESI d Full ms2
 474.39@hcd35.00
 [50.00-500.00]