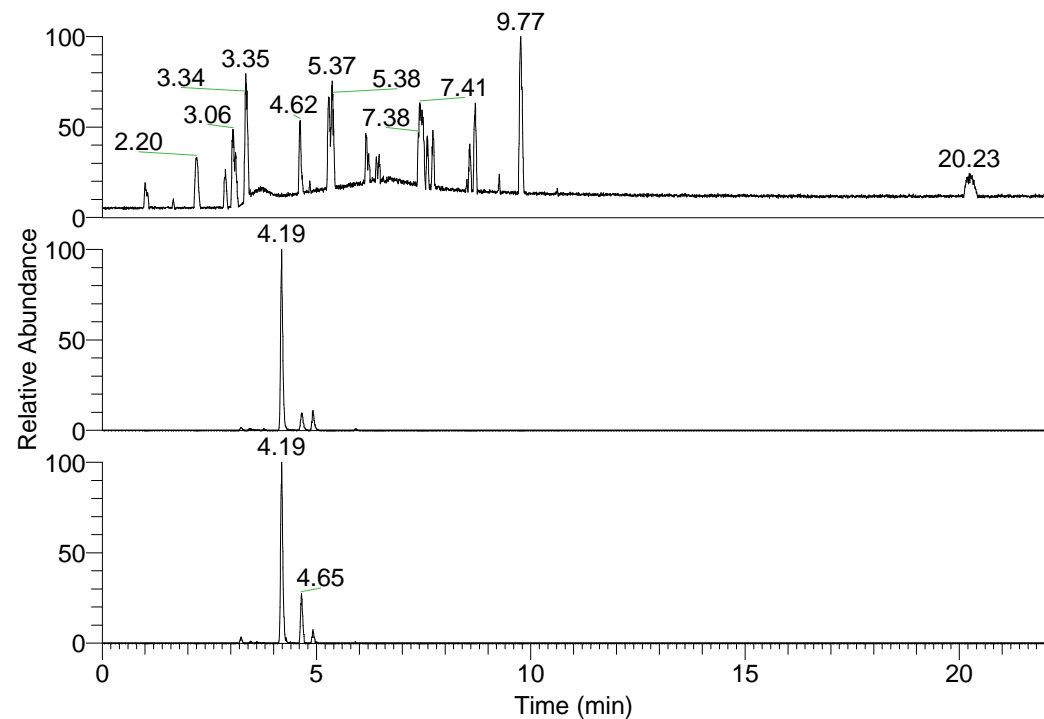


RT: 0.00 - 22.01



NL: 1.37E8
 Base Peak m/z=
 100.00000-1500.00000 F:
 FTMS + p ESI Full ms
 [100.00-1500.00] MS
 Hololensp_HDX

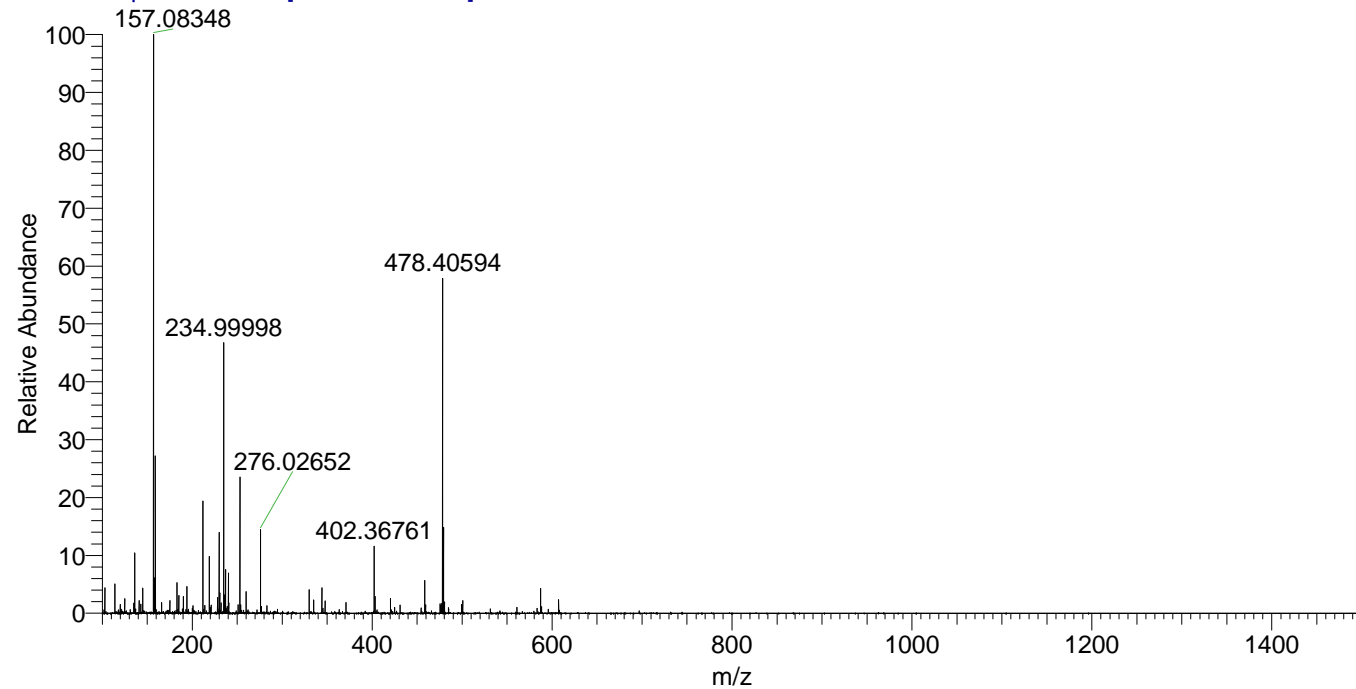
Hololensp_HDX#651 RT: 4.19
 T: FTMS + p ESI Full ms [100.00-1500.00]
 m/z= 478.00000-479.00000

m/z	Intensity	Relative	Delta (ppm)	Composition
478.40594	11171829.0	100.00	-0.47	C ₂₃ H ₃₆ ² H ₉ O ₄ N ₆
			2.76	C ₂₃ H ₃₄ ² H ₁₀ O ₄ N ₆
			-3.71	C ₂₃ H ₃₈ ² H ₈ O ₄ N ₆

NL: 1.12E7
 Base Peak m/z=
 478.40433-478.40911 F: FTMS
 + p ESI Full ms
 [100.00-1500.00] MS
 Hololensp_HDX

NL: 1.37E6
 Base Peak m/z=
 240.20921-240.21161 F: FTMS
 + p ESI Full ms
 [100.00-1500.00] MS
 Hololensp_HDX

Hololensp_HDX #651 RT: 4.19 AV: 1 NL: 1.85E7
 T: FTMS + p ESI Full ms [100.00-1500.00]



Hololensp_HDX #651 RT: 4.19 AV: 1 NL: 1.07E7
 T: FTMS + p ESI Full ms [100.00-1500.00]

