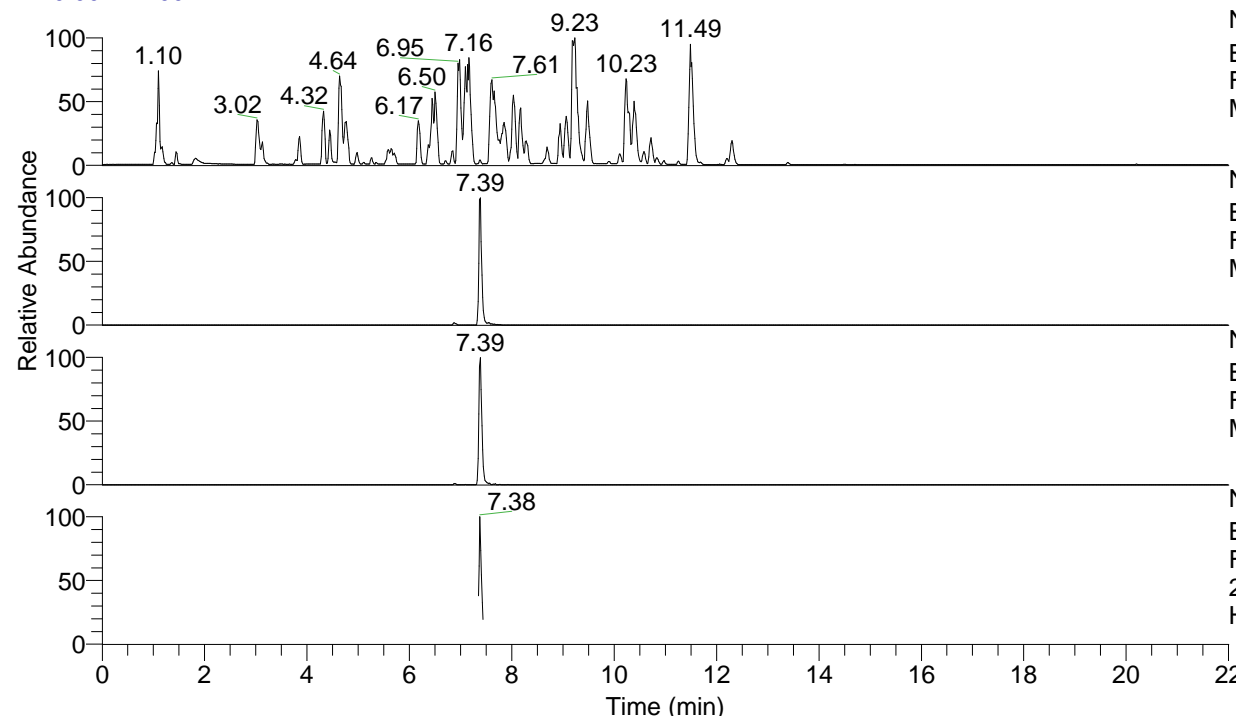


RT: 0.00 - 22.00



NL: 4.98E7
 Base Peak m/z= 100.00000-1500.00000 F:
 FTMS + p ESI Full ms [100.00-1500.00]
 MS Hololenasp

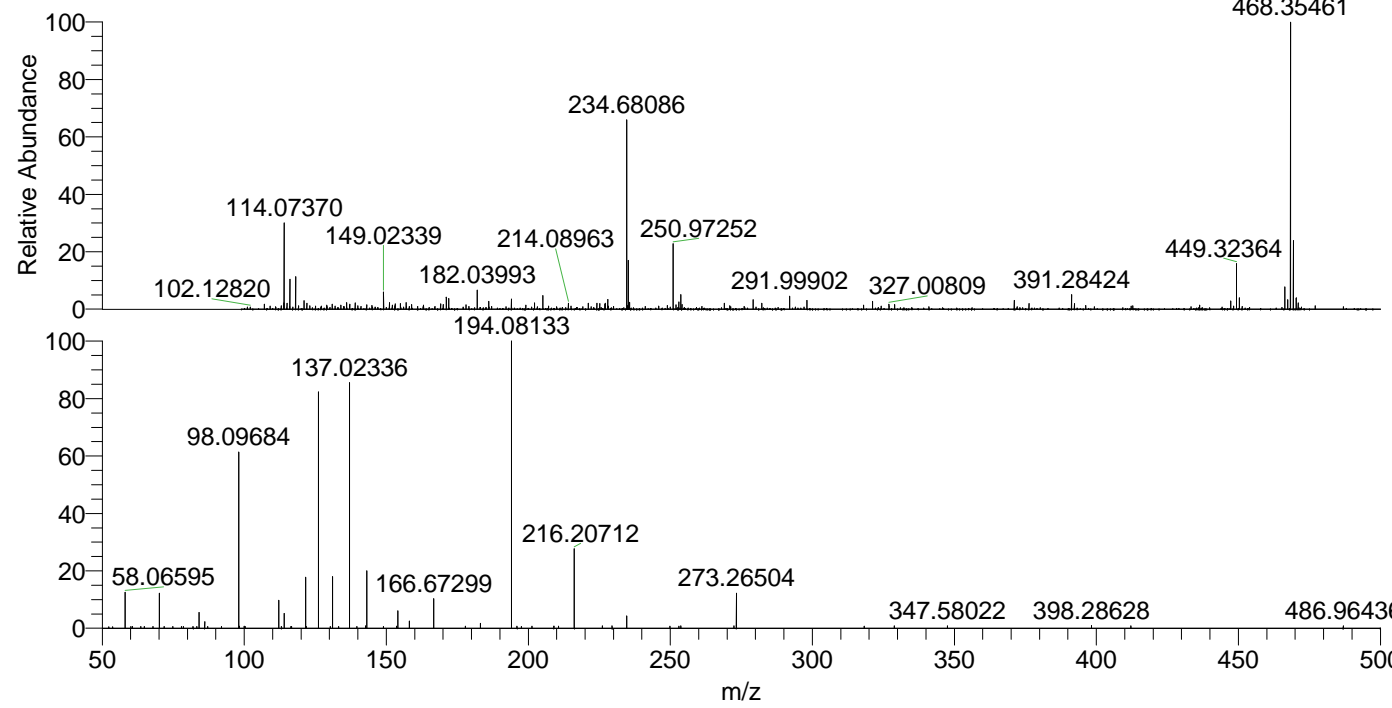
NL: 2.06E6
 Base Peak m/z= 468.35264-468.35732 F:
 FTMS + p ESI Full ms [100.00-1500.00]
 MS Hololenasp

NL: 1.36E6
 Base Peak m/z= 234.68023-234.68257 F:
 FTMS + p ESI Full ms [100.00-1500.00]
 MS Hololenasp

NL: 1.52E5
 Base Peak m/z= 50.00000-1500.00000 F:
 FTMS + p ESI d Full ms2
 234.68@hcd35.00 [50.00-495.00] MS
 Hololenasp

Hololenasp#2945-2961 RT: 7.37-7.41
 F: FTMS + p ESI d Full ms2 234.68 ...
 m/z= 50.00000-1000.00000

m/z	Intensity	Relative
58.06595	13165.7	12.48
70.06597	12823.5	12.15
71.77102	675.8	0.64
78.59551	670.5	0.64
82.00328	646.0	0.61
83.34435	658.2	0.62
84.08145	5784.0	5.48
86.09721	2451.7	2.32
87.17121	699.5	0.66
98.09684	65286.5	61.87
98.32995	759.4	0.72
99.98707	783.0	0.74
112.11254	10413.2	9.87
113.10840	687.5	0.65
114.09156	5492.1	5.20
116.45743	680.0	0.64
116.61750	651.2	0.62
121.63360	18947.9	17.96
121.86069	657.4	0.62
126.12789	86108.0	81.61
130.31780	711.0	0.67
131.11818	18793.9	17.81
133.25511	687.9	0.65
137.02336	89585.3	84.90
139.64592	698.3	0.66
142.69238	826.2	0.78
143.15447	20912.7	19.82
149.00779	717.1	0.68
153.61003	774.3	0.73
154.05017	6492.2	6.15
158.16004	2590.3	2.45
166.67299	11042.0	10.46
177.86883	760.5	0.72
183.18587	1818.4	1.72
194.08133	105515.3	100.00
196.04436	713.0	0.68
197.58209	711.0	0.67
201.30684	755.7	0.72
209.01485	814.9	0.77
210.64478	771.9	0.73
216.20712	29042.8	27.52
226.07148	853.7	0.81
229.51881	847.3	0.80
234.68135	4475.7	4.24
249.88350	731.1	0.69
253.05346	763.6	0.72
253.73062	845.8	0.80
272.40622	852.3	0.81
273.26504	13146.0	12.46
318.26589	746.6	0.71
328.85393	835.7	0.79
347.58022	882.1	0.84
398.28628	1069.1	1.01
412.15401	841.3	0.80
486.96436	910.2	0.86



NL: 2.03E6
 Hololenasp#2953 RT:
 7.39 AV: 1 T: FTMS + p
 ESI Full lock ms
 [100.00-1500.00]

NL: 1.05E5
 Hololenasp#2941-2961
 RT: 7.37-7.41 AV: 4 F:
 FTMS + p ESI d Full ms2
 234.68@hcd35.00
 [50.00-495.00]