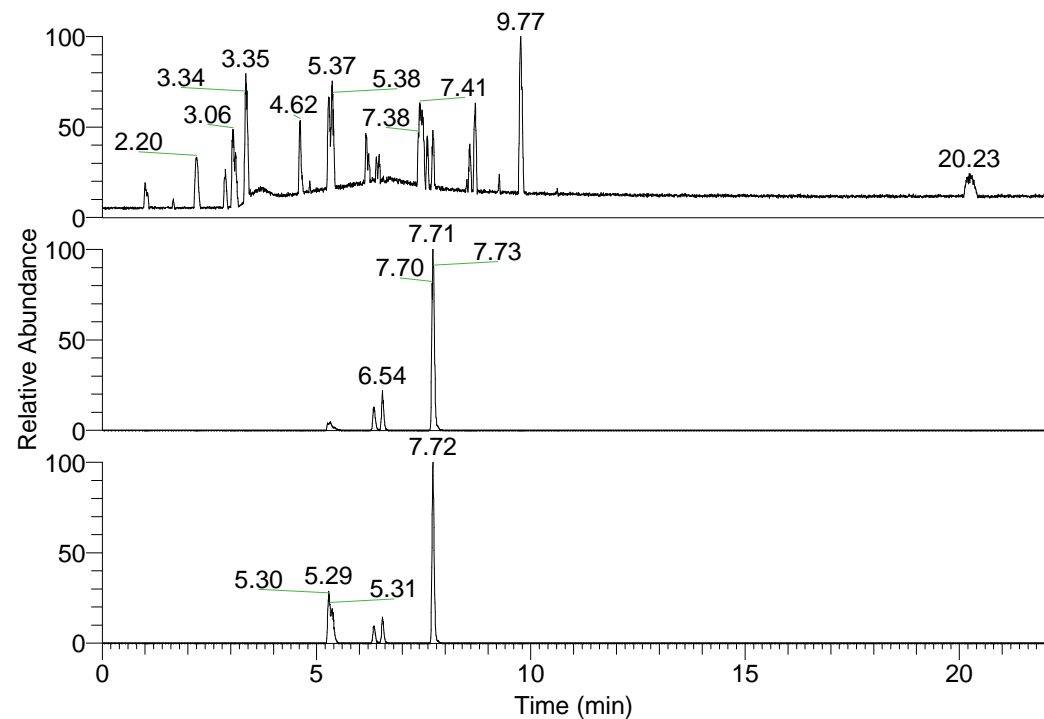


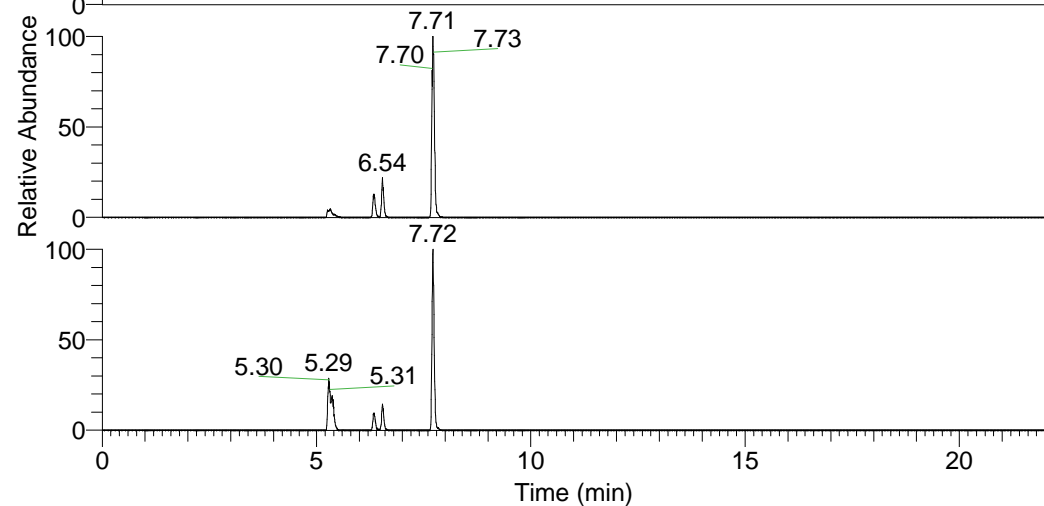
RT: 0.00 - 22.01



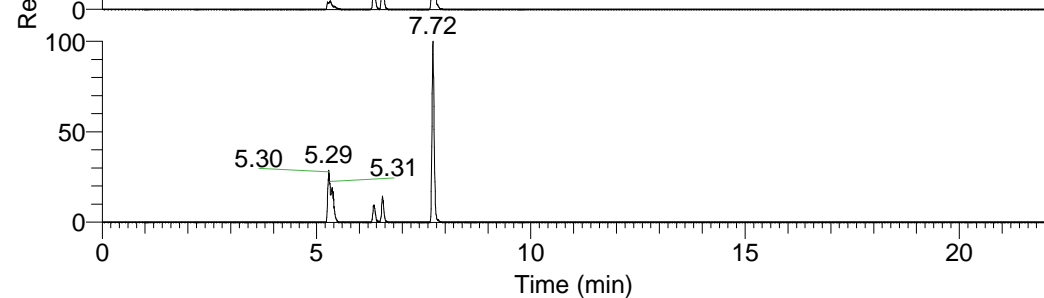
NL: 1.37E8
Base Peak m/z=
100.00000-1500.00000 F:
FTMS + p ESI Full ms
[100.00-1500.00] MS
Hololenasp_HDX

Hololenasp_HDX#1244 RT: 7.71
T: FTMS + p ESI Full ms [100.00-1500.00]
m/z= 474.00000-475.00000

m/z	Intensity	Relative	Delta (ppm)	Composition
474.37476	65905800.0	100.00	-0.24	C ₂₃ H ₃₂ ² H ₉ O ₄ N ₆
			3.02	C ₂₃ H ₃₀ ² H ₁₀ O ₄ N ₆
			-3.51	C ₂₃ H ₃₄ ² H ₈ O ₄ N ₆

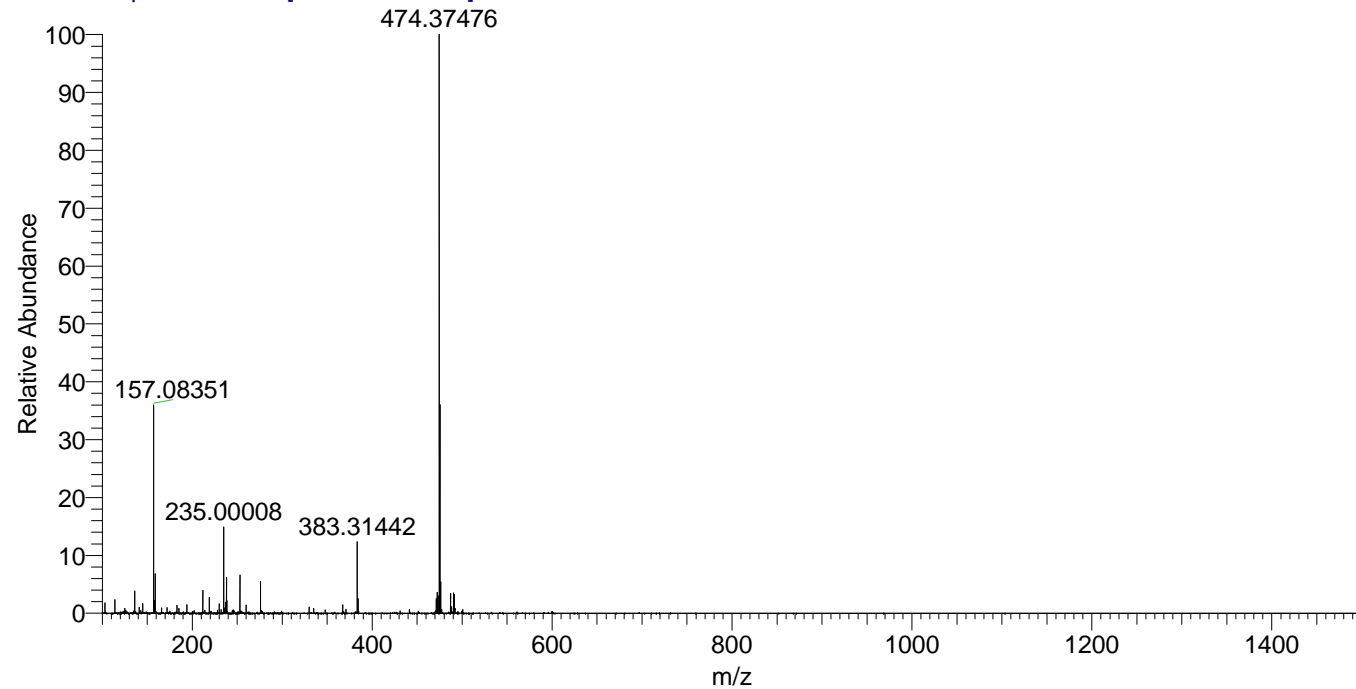


NL: 6.59E7
Base Peak m/z=
474.37305-474.37779 F: FTMS
+ p ESI Full ms
[100.00-1500.00] MS
Hololenasp_HDX



NL: 4.27E6
Base Peak m/z=
238.19357-238.19595 F: FTMS
+ p ESI Full ms
[100.00-1500.00] MS
Hololenasp_HDX

Hololenasp_HDX #1244 RT: 7.71 AV: 1 NL: 6.56E7
T: FTMS + p ESI Full ms [100.00-1500.00]



Hololenasp_HDX #1244 RT: 7.71 AV: 1 NL: 6.56E7
T: FTMS + p ESI Full ms [100.00-1500.00]

