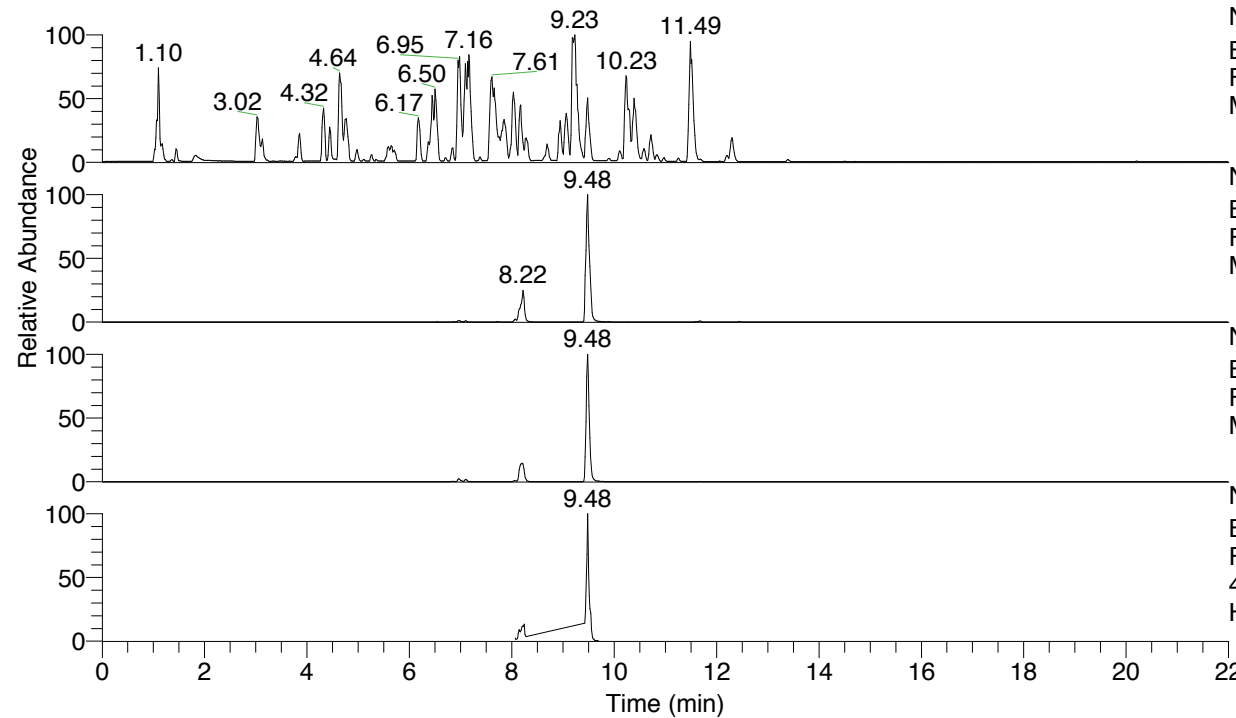


RT: 0.00 - 22.00



NL: 4.98E7
 Base Peak m/z= 100.00000-1500.00000 F:
 FTMS + p ESI Full ms [100.00-1500.00]
 MS Hololenasp

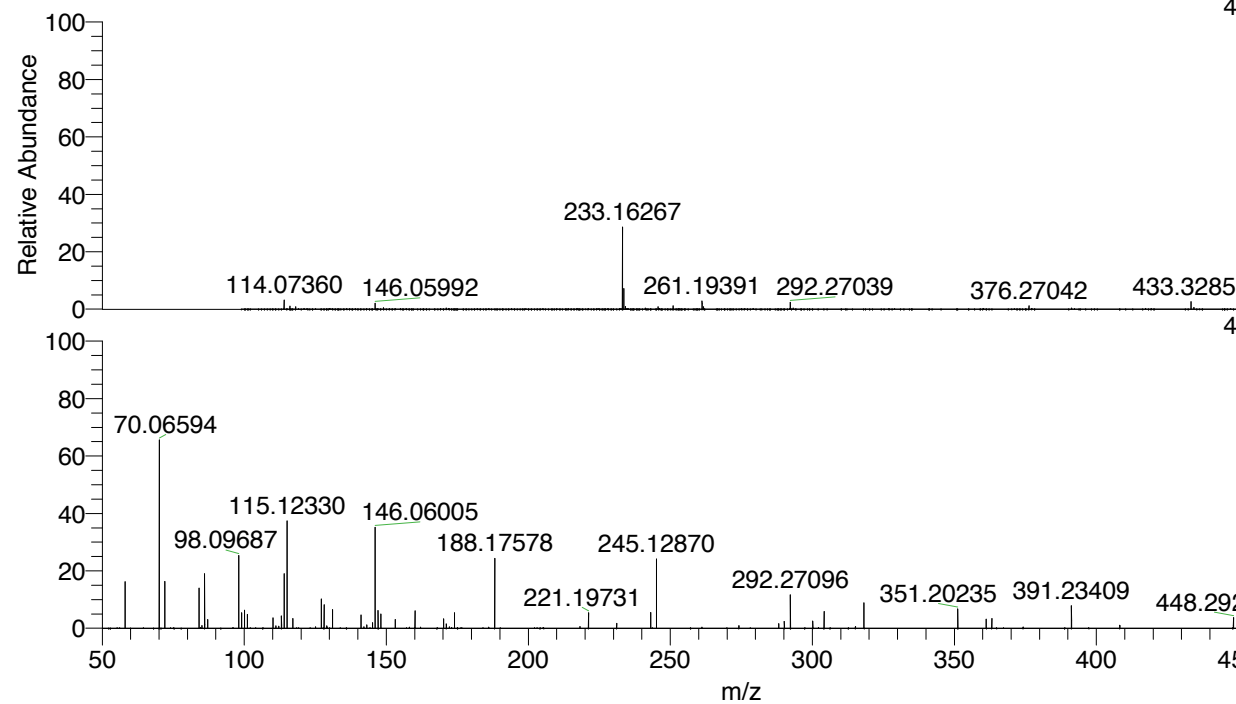
NL: 2.52E7
 Base Peak m/z= 465.31660-465.32126 F:
 FTMS + p ESI Full ms [100.00-1500.00]
 MS Hololenasp

NL: 7.08E6
 Base Peak m/z= 233.16221-233.16455 F:
 FTMS + p ESI Full ms [100.00-1500.00]
 MS Hololenasp

NL: 2.99E6
 Base Peak m/z= 50.00000-1500.00000 F:
 FTMS + p ESI d Full ms2
 465.32@hcd35.00 [50.00-495.00] MS
 Hololenasp

Hololenasp#3788-3812 RT: 9.45-9.51 AV: 5
 F: FTMS + p ESI d Full ms2 465.32@h ...
 m/z= 50.00000-1000.00000

m/z	Intensity	Relative
58.06601	290193.3	16.06
70.06594	1172001.5	64.86
72.08152	294222.6	16.28
84.08144	249937.5	13.83
85.07671	17908.2	0.99
86.06066	340152.9	18.82
86.09709	9753.0	0.54
87.09228	54826.5	3.03
98.09687	456264.1	25.25
99.09220	96938.4	5.36
100.07622	113507.5	6.28
101.10787	88400.8	4.89
110.09680	65286.1	3.61
111.09207	14797.8	0.82
112.11272	13992.1	0.77
113.10766	78311.5	4.33
114.09165	338322.1	18.72
115.12330	687922.8	38.07
117.10266	60816.8	3.37
127.12311	183121.7	10.13
128.10726	148357.6	8.21
129.10289	14972.1	0.83
131.11806	117917.5	6.53
141.13865	81635.7	4.52
142.13393	9644.7	0.53
143.11833	21406.0	1.18
145.13357	35088.0	1.94
146.06005	640282.6	35.43
147.11288	21075.3	1.17
147.13662	111969.5	6.20
148.14451	87875.1	4.86
153.13890	54661.5	3.02
160.14452	109334.1	6.05
170.16531	59835.2	3.31
171.14959	27651.8	1.53
174.05515	97275.1	5.38
188.17578	446166.1	24.69
188.19154	12905.2	0.71
218.18699	11202.3	0.62
221.19731	100060.4	5.54
231.11322	30828.4	1.71
243.11252	102559.5	5.68
245.12870	437804.5	24.23
274.15551	14719.0	0.81
288.17131	30522.2	1.69
290.15017	42958.6	2.38
292.27096	210009.5	11.62
300.17120	46174.0	2.56
304.16572	104219.1	5.77
315.18281	11480.2	0.64
318.18102	162735.0	9.01
351.20235	120494.6	6.67
361.22312	56865.9	3.15
363.20281	59871.8	3.31
391.23409	143699.1	7.95
408.25970	18906.9	1.05
448.29259	68423.3	3.79
465.31864	1807005.8	100.00



NL: 2.47E7
 Hololenasp#3799 RT:
 9.48 AV: 1 T: FTMS + p
 ESI Full ms
 [100.00-1500.00]

NL: 1.78E6
 Hololenasp#3785-3812
 RT: 9.45-9.51 AV: 5 F:
 FTMS + p ESI d Full ms2
 465.32@hcd35.00
 [50.00-495.00]

Hololenasp#3788-3812 RT: 9.45-9.51 AV: 5

F: FTMS + p ESI d Full ms2 465.32@hcd35.00 [50.00-495.00]

m/z= 50.00000-1000.00000

m/z	Intensity	Relative
58.06601	290193.3	16.06
70.06594	1172001.5	64.86
72.08152	294222.6	16.28
84.08144	249937.5	13.83
85.07671	17908.2	0.99
86.06066	340152.9	18.82
87.09228	54826.5	3.03
98.09687	456264.1	25.25
99.09220	96938.4	5.36
100.07622	113507.5	6.28
101.10787	88400.8	4.89
110.09680	65286.1	3.61
111.09207	14797.8	0.82
112.11272	13992.1	0.77
113.10766	78311.5	4.33
114.09165	338322.1	18.72
115.12330	687922.8	38.07
117.10266	60816.8	3.37
127.12311	183121.7	10.13
128.10726	148357.6	8.21
129.10289	14972.1	0.83
131.11806	117917.5	6.53
141.13865	81635.7	4.52
143.11833	21406.0	1.18
145.13357	35088.0	1.94
146.06005	640282.6	35.43
147.11288	21075.3	1.17
147.13662	111969.5	6.20
148.14451	87875.1	4.86
153.13890	54661.5	3.02
160.14452	109334.1	6.05
170.16531	59835.2	3.31
171.14959	27651.8	1.53
174.05515	97275.1	5.38
188.17578	446166.1	24.69
188.19154	12905.2	0.71
221.19731	100060.4	5.54
231.11322	30828.4	1.71
243.11252	102559.5	5.68

Hololenasp#3788-3812 RT: 9.45-9.51 AV: 5

F: FTMS + p ESI d Full ms2 465.32@hcd35.00 [50.00-495.00]

m/z= 50.00000-1000.00000

m/z	Intensity	Relative
245.12870	437804.5	24.23
274.15551	14719.0	0.81
288.17131	30522.2	1.69
290.15017	42958.6	2.38
292.27096	210009.5	11.62
300.17120	46174.0	2.56
304.16572	104219.1	5.77
315.18281	11480.2	0.64
318.18102	162735.0	9.01
351.20235	120494.6	6.67
361.22312	56865.9	3.15
363.20281	59871.8	3.31
391.23409	143699.1	7.95
408.25970	18906.9	1.05
448.29259	68423.3	3.79
465.31864	1807005.8	100.00