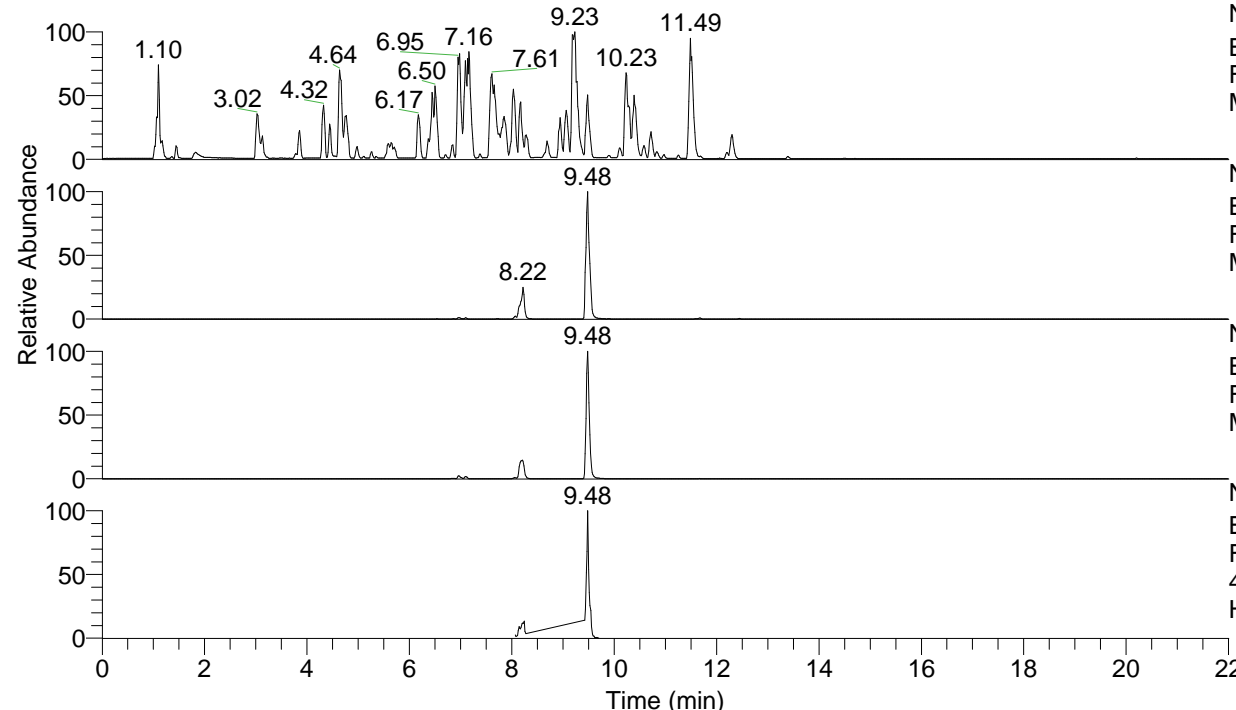


RT: 0.00 - 22.00



NL: 4.98E7  
 Base Peak m/z= 100.00000-1500.00000 F:  
 FTMS + p ESI Full ms [100.00-1500.00]  
 MS Hololenasp

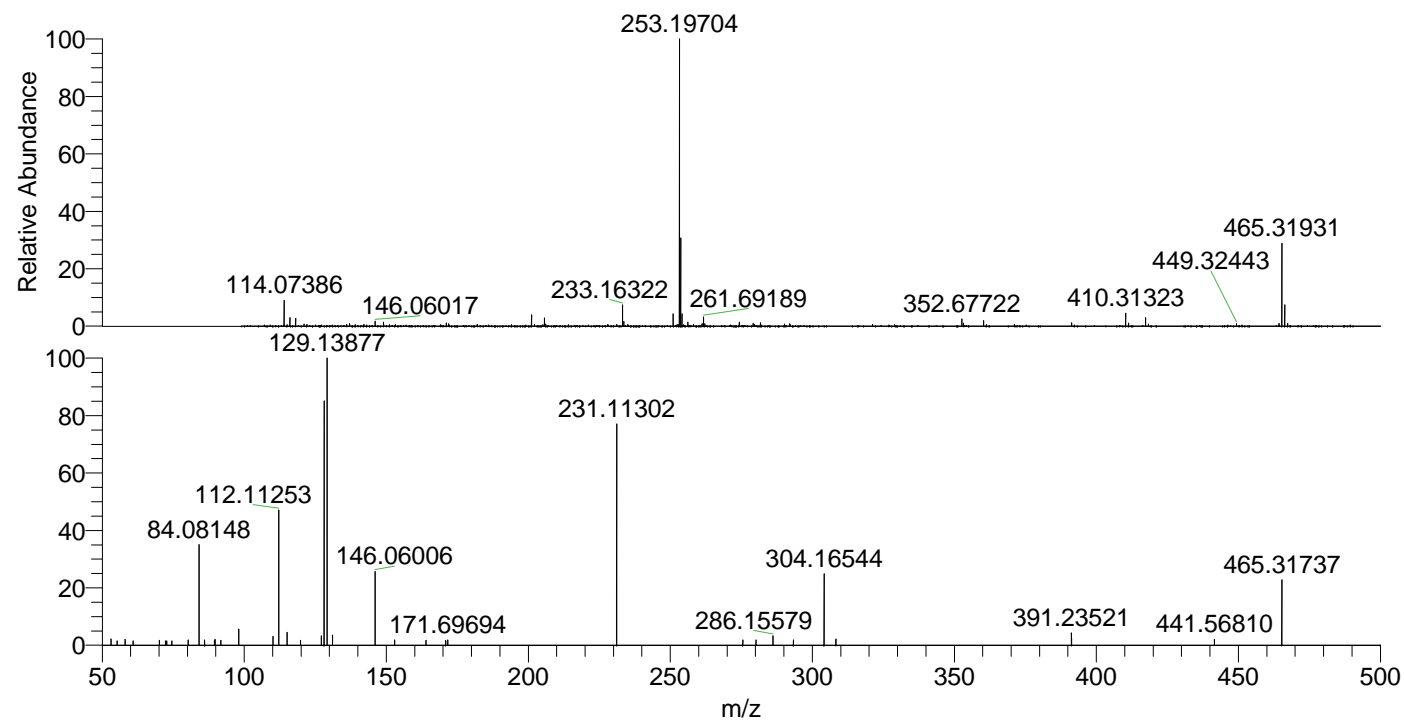
NL: 2.52E7  
 Base Peak m/z= 465.31660-465.32126 F:  
 FTMS + p ESI Full ms [100.00-1500.00]  
 MS Hololenasp

NL: 7.08E6  
 Base Peak m/z= 233.16221-233.16455 F:  
 FTMS + p ESI Full ms [100.00-1500.00]  
 MS Hololenasp

NL: 2.99E6  
 Base Peak m/z= 50.00000-1500.00000 F:  
 FTMS + p ESI d Full ms2  
 465.32@hcd35.00 [50.00-495.00] MS  
 Hololenasp

Hololenasp#3246-3251 RT: 8.11-8.13  
 F: FTMS + p ESI d Full ms2 465.32 ...  
 m/z= 50.00000-1000.00000

| m/z       | Intensity | Relative |
|-----------|-----------|----------|
| 53.05274  | 2450.6    | 2.13     |
| 55.28665  | 1713.8    | 1.49     |
| 58.06608  | 2332.5    | 2.03     |
| 60.88544  | 1710.3    | 1.49     |
| 70.06591  | 1932.7    | 1.68     |
| 72.24993  | 1719.6    | 1.49     |
| 72.75646  | 1690.8    | 1.47     |
| 74.55959  | 1745.4    | 1.52     |
| 80.28043  | 2086.7    | 1.81     |
| 84.08148  | 39946.8   | 34.71    |
| 86.06080  | 2118.1    | 1.84     |
| 89.53780  | 1839.9    | 1.60     |
| 89.68687  | 2327.8    | 2.02     |
| 91.75315  | 2042.9    | 1.78     |
| 98.09715  | 6599.1    | 5.73     |
| 110.09695 | 3535.6    | 3.07     |
| 112.11253 | 55108.5   | 47.89    |
| 115.12301 | 5246.3    | 4.56     |
| 119.83823 | 2004.1    | 1.74     |
| 127.12329 | 3760.8    | 3.27     |
| 128.10716 | 98308.3   | 85.43    |
| 129.13877 | 115076.4  | 100.00   |
| 131.11849 | 4059.4    | 3.53     |
| 146.06006 | 30134.8   | 26.19    |
| 152.99214 | 2118.3    | 1.84     |
| 163.97890 | 1968.7    | 1.71     |
| 170.92118 | 2010.3    | 1.75     |
| 171.69694 | 2129.3    | 1.85     |
| 231.11302 | 88386.9   | 76.81    |
| 275.52849 | 2073.7    | 1.80     |
| 280.15913 | 2067.5    | 1.80     |
| 286.15579 | 3725.3    | 3.24     |
| 293.32869 | 2132.6    | 1.85     |
| 304.16544 | 28359.2   | 24.64    |
| 308.30435 | 2440.0    | 2.12     |
| 391.23521 | 4883.9    | 4.24     |
| 441.56810 | 2434.1    | 2.12     |
| 465.31737 | 26193.9   | 22.76    |



NL: 8.92E6  
 Hololenasp#3259 RT:  
 8.15 AV: 1 T: FTMS + p  
 ESI Full ms  
 [100.00-1500.00]

NL: 1.14E5  
 Hololenasp#3246-3254  
 RT: 8.11-8.13 AV: 2 F:  
 FTMS + p ESI d Full ms2  
 465.32@hcd35.00  
 [50.00-495.00]