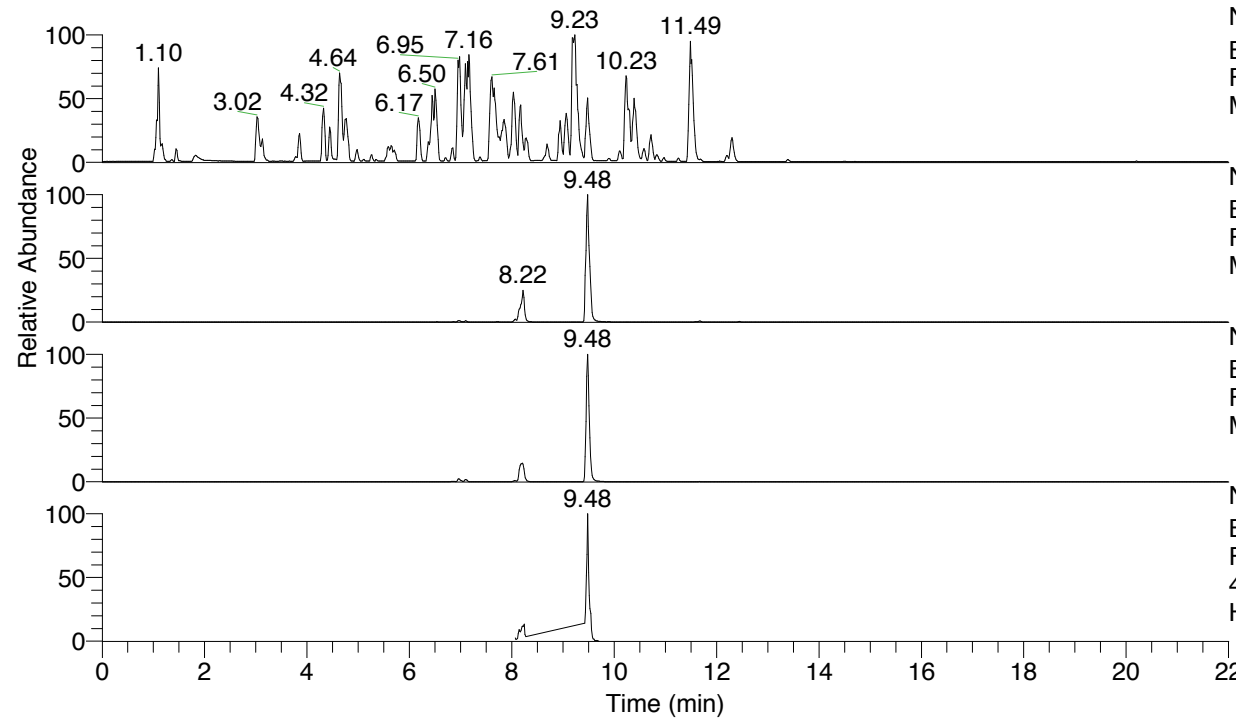


RT: 0.00 - 22.00



NL: 4.98E7
 Base Peak m/z= 100.00000-1500.00000 F:
 FTMS + p ESI Full ms [100.00-1500.00]
 MS Hololenasp

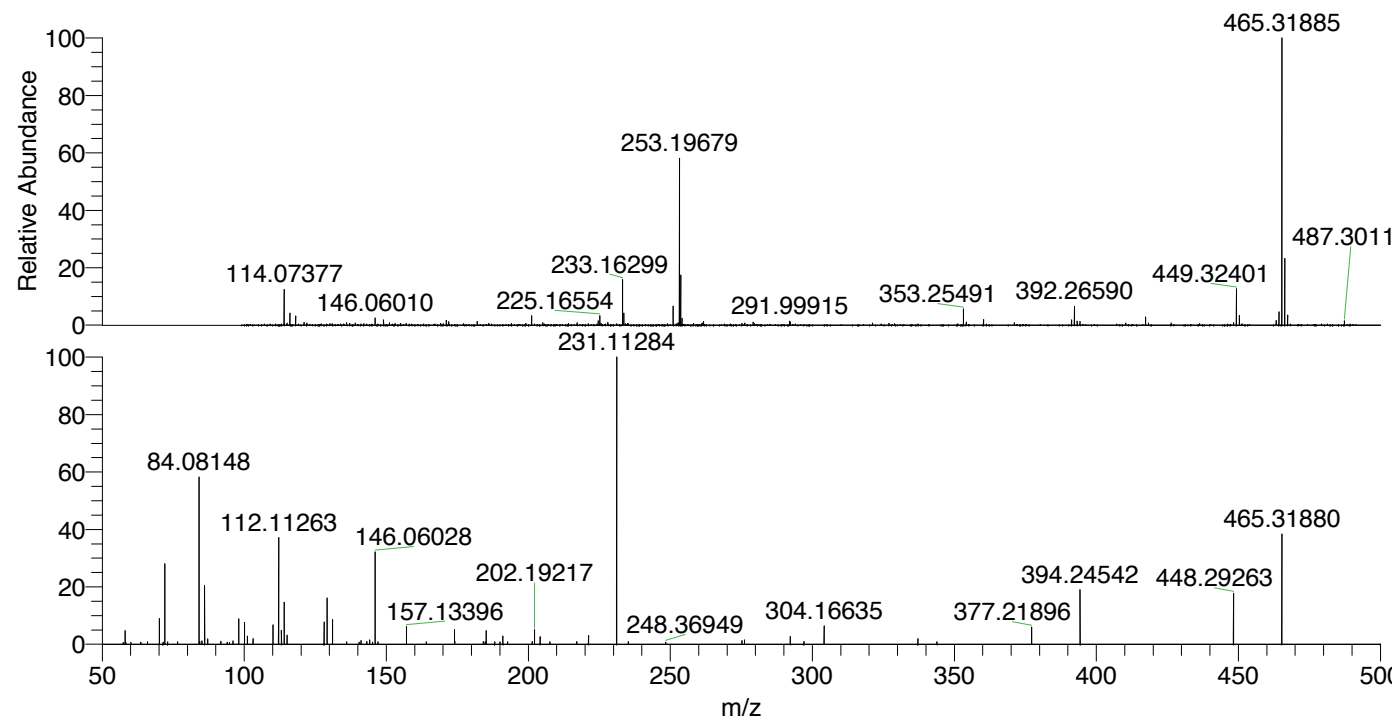
NL: 2.52E7
 Base Peak m/z= 465.31660-465.32126 F:
 FTMS + p ESI Full ms [100.00-1500.00]
 MS Hololenasp

NL: 7.08E6
 Base Peak m/z= 233.16221-233.16455 F:
 FTMS + p ESI Full ms [100.00-1500.00]
 MS Hololenasp

NL: 2.99E6
 Base Peak m/z= 50.00000-1500.00000 F:
 FTMS + p ESI d Full ms2
 465.32@hcd35.00 [50.00-495.00] MS
 Hololenasp

Hololenasp#3297-3302 RT: 8.24-8.25
 F: FTMS + p ESI d Full ms2 465.32 ...
 m/z= 50.00000-1000.00000

m/z	Intensity	Relative
58.06598	12362.7	4.70
70.06597	23910.0	9.08
72.08156	76115.0	28.92
72.08526	3275.6	1.24
84.08148	154797.0	58.81
84.32328	2655.3	1.01
85.07683	3058.9	1.16
86.06066	54993.4	20.89
87.09266	4966.9	1.89
91.75858	2977.8	1.13
96.08156	3099.4	1.18
98.09713	23712.2	9.01
100.07633	20035.5	7.61
101.10794	7490.6	2.85
103.08737	5145.6	1.95
103.12361	3720.2	1.41
110.09701	18561.8	7.05
112.07633	8759.6	3.33
112.10511	3261.9	1.24
112.11263	97957.1	37.22
113.10790	12836.6	4.88
114.09198	39571.6	15.03
115.12335	8355.9	3.17
128.10746	20491.0	7.78
129.13889	43797.7	16.64
131.11824	22952.3	8.72
141.13903	3357.9	1.28
143.11808	2634.0	1.00
144.12593	4023.1	1.53
146.06028	85517.4	32.49
157.13396	16278.1	6.18
174.05546	13729.8	5.22
174.16046	2740.7	1.04
184.18091	2566.7	0.98
185.16544	12832.3	4.88
188.17522	2337.1	0.89
191.08236	7423.4	2.82
201.36774	2389.2	0.91
202.19217	13790.2	5.24
204.17176	6879.1	2.61
217.09815	2563.6	0.97
221.19736	8112.8	3.08
231.11284	263219.3	100.00
235.21616	2389.8	0.91
275.24720	3559.3	1.35
276.13526	3902.2	1.48
292.26995	7132.5	2.71
297.04810	2380.8	0.90
304.16635	17640.8	6.70
337.18895	5149.7	1.96
343.88201	2332.1	0.89
377.21896	15694.8	5.96
394.24542	50260.3	19.09
448.29263	46912.1	17.82
465.31880	103387.7	39.28



NL: 6.20E6
 Hololenasp#3289 RT:
 8.22 AV: 1 T: FTMS + p
 ESI Full lock ms
 [100.00-1500.00]

NL: 2.63E5
 Hololenasp#3294-3304
 RT: 8.24-8.25 AV: 2 F:
 FTMS + p ESI d Full ms2
 465.32@hcd35.00
 [50.00-495.00]

Hololenasp#3297-3302 RT: 8.24-8.25 AV: 2

F: FTMS + p ESI d Full ms2 465.32@hcd35.00 [50.00-495.00]

m/z= 50.00000-1000.00000

m/z	Intensity	Relative
57.35849	1680.8	0.64
58.06598	12362.7	4.70
58.24323	1864.0	0.71
60.11289	1748.1	0.66
63.53714	1808.3	0.69
65.93187	2087.3	0.79
70.06597	23910.0	9.08
71.41550	2055.4	0.78
72.08156	76115.0	28.92
72.08526	3275.6	1.24
72.99299	2224.2	0.85
76.51900	2119.6	0.81
84.08148	154797.0	58.81
84.32328	2655.3	1.01
85.07683	3058.9	1.16
86.06066	54993.4	20.89
87.09266	4966.9	1.89
91.75858	2977.8	1.13
93.96166	1939.0	0.74
94.83764	1715.7	0.65
96.08156	3099.4	1.18
98.09713	23712.2	9.01
100.07633	20035.5	7.61
101.10794	7490.6	2.85
103.08737	5145.6	1.95
103.12361	3720.2	1.41
110.09701	18561.8	7.05
112.07633	8759.6	3.33
112.10511	3261.9	1.24
112.11263	97957.1	37.22
113.10790	12836.6	4.88
114.09198	39571.6	15.03
115.12335	8355.9	3.17
128.10746	20491.0	7.78
129.13889	43797.7	16.64
131.11824	22952.3	8.72
136.06733	2245.6	0.85
140.46216	1944.2	0.74
141.13903	3357.9	1.28

Hololenasp#3297-3302 RT: 8.24-8.25 AV: 2

F: FTMS + p ESI d Full ms2 465.32@hcd35.00 [50.00-495.00]

m/z= 50.00000-1000.00000

m/z	Intensity	Relative
143.11808	2634.0	1.00
144.12593	4023.1	1.53
145.13332	1992.0	0.76
146.06028	85517.4	32.49
147.11318	2100.0	0.80
157.13396	16278.1	6.18
164.13901	2125.4	0.81
174.05546	13729.8	5.22
174.16046	2740.7	1.04
184.18091	2566.7	0.98
184.86110	2329.5	0.89
185.16544	12832.3	4.88
188.17522	2337.1	0.89
190.05018	2191.5	0.83
191.08236	7423.4	2.82
192.75900	2114.5	0.80
201.36774	2389.2	0.91
202.19217	13790.2	5.24
204.17176	6879.1	2.61
207.57755	2208.0	0.84
217.09815	2563.6	0.97
221.19736	8112.8	3.08
231.11284	263219.3	100.00
235.21616	2389.8	0.91
248.36949	2026.5	0.77
275.24720	3559.3	1.35
276.13526	3902.2	1.48
292.26995	7132.5	2.71
297.04810	2380.8	0.90
304.16635	17640.8	6.70
337.18895	5149.7	1.96
343.88201	2332.1	0.89
377.21896	15694.8	5.96
394.24542	50260.3	19.09
448.29263	46912.1	17.82
465.31880	103387.7	39.28