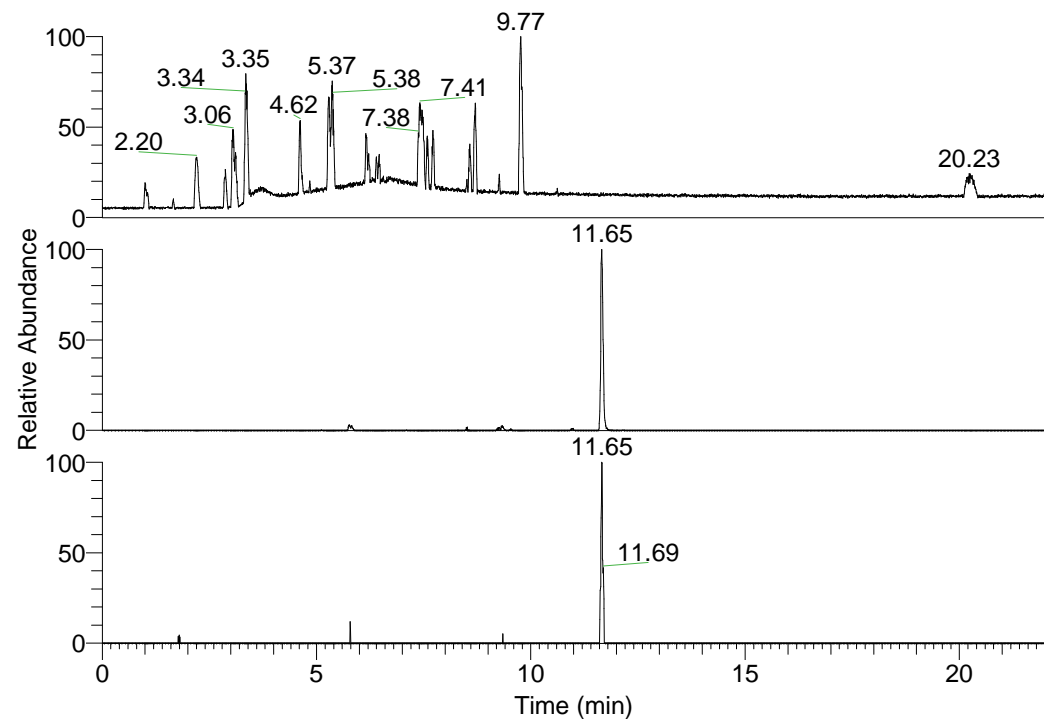


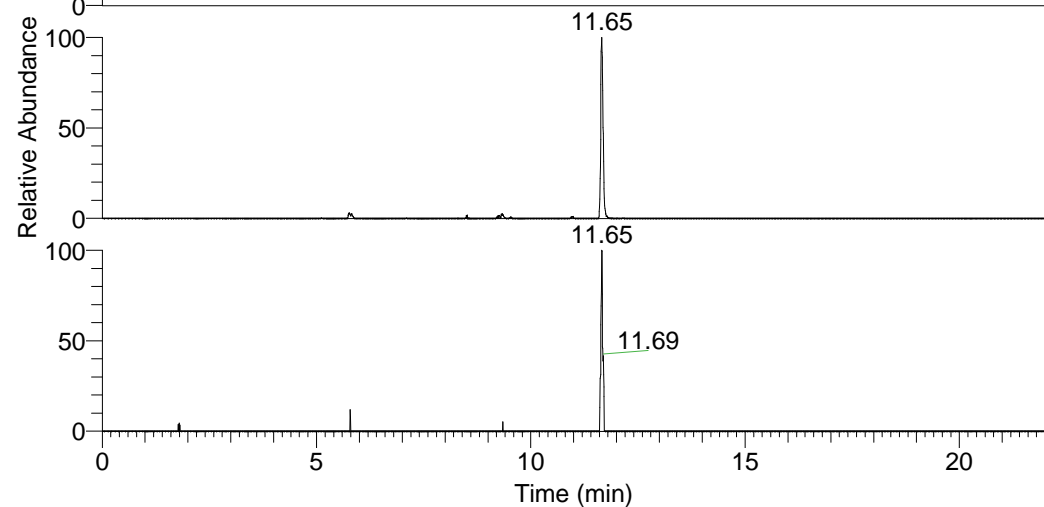
RT: 0.00 - 22.01



NL: 1.37E8  
Base Peak m/z=  
100.00000-1500.00000 F:  
FTMS + p ESI Full ms  
[100.00-1500.00] MS  
Hololenasp\_HDX

Hololenasp\_HDX#1891 RT: 11.65  
T: FTMS + p ESI Full ms [100.00-1500.00]  
m/z= 471.00000-472.00000

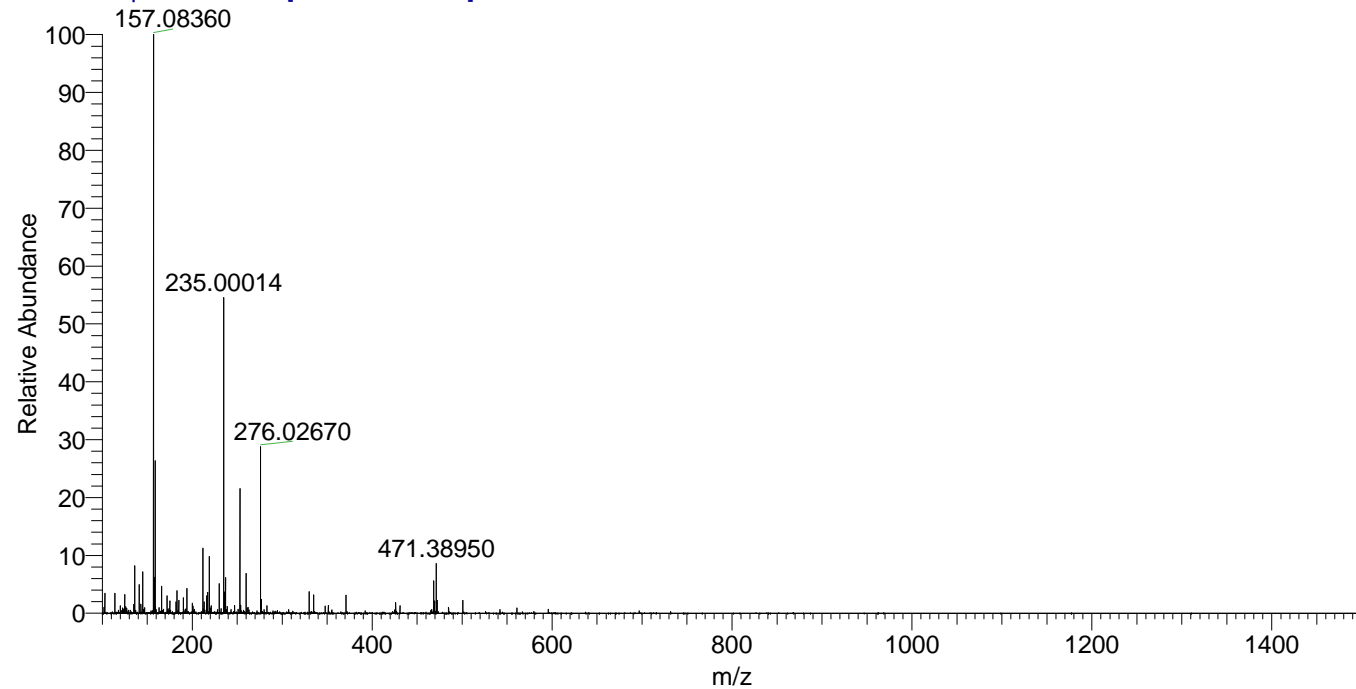
m/z	Intensity	Relative	Delta (ppm)	Composition
471.38950	1528736.9	100.00	0.35	C <sub>24</sub> H <sub>35</sub> <sup>2</sup> H <sub>8</sub> O <sub>3</sub> N <sub>6</sub>
			-2.93	C <sub>24</sub> H <sub>37</sub> <sup>2</sup> H <sub>7</sub> O <sub>3</sub> N <sub>6</sub>
			3.64	C <sub>24</sub> H <sub>33</sub> <sup>2</sup> H <sub>9</sub> O <sub>3</sub> N <sub>6</sub>



NL: 1.61E6  
Base Peak m/z=  
471.38752-471.39224 F: FTMS  
+ p ESI Full ms  
[100.00-1500.00] MS  
Hololenasp\_HDX

NL: 7.47E4  
Base Peak m/z=  
236.70081-236.70317 F: FTMS  
+ p ESI Full ms  
[100.00-1500.00] MS  
Hololenasp\_HDX

Hololenasp\_HDX #1891 RT: 11.65 AV: 1 NL: 1.74E7  
T: FTMS + p ESI Full ms [100.00-1500.00]



Hololenasp\_HDX #1891 RT: 11.65 AV: 1 NL: 1.49E6  
T: FTMS + p ESI Full ms [100.00-1500.00]

