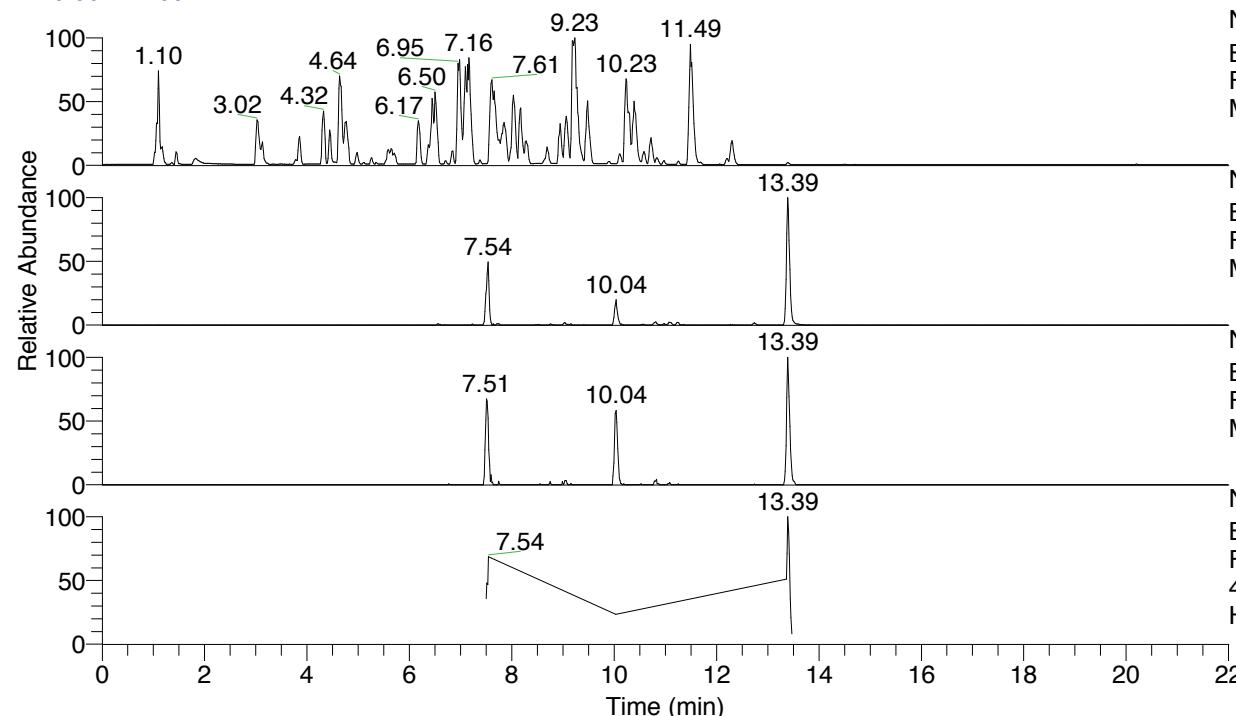


RT: 0.00 - 22.00



NL: 4.98E7
 Base Peak m/z= 100.00000-1500.00000 F:
 FTMS + p ESI Full ms [100.00-1500.00]
 MS Hololenasp

NL: 1.19E6
 Base Peak m/z= 463.33734-463.34198 F:
 FTMS + p ESI Full ms [100.00-1500.00]
 MS Hololenasp

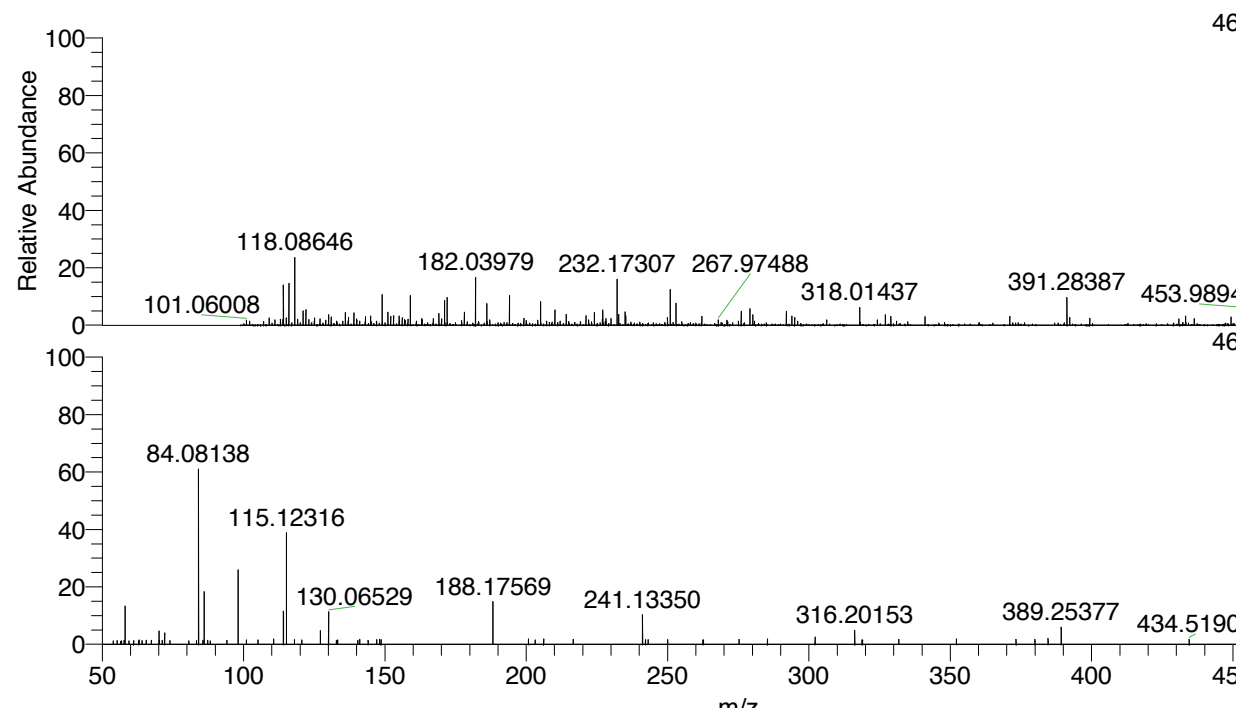
NL: 1.82E5
 Base Peak m/z= 232.17258-232.17490 F:
 FTMS + p ESI Full ms [100.00-1500.00]
 MS Hololenasp

NL: 8.39E4
 Base Peak m/z= 50.00000-1500.00000 F:
 FTMS + p ESI d Full ms2
 463.34@hcd35.00 [50.00-490.00] MS
 Hololenasp

Hololenasp#5354-5372 RT: 13.38-13.42

F: FTMS + p ESI d Full ms2 463.34 ...
 m/z= 50.00000-1000.00000

m/z	Intensity	Relative
53.87542	817.2	1.20
55.25820	872.2	1.28
56.48218	732.0	1.07
56.90086	803.2	1.18
57.75131	968.5	1.42
58.06589	9072.8	13.28
59.43673	779.9	1.14
61.09898	855.7	1.25
62.84935	824.8	1.21
63.02451	1007.2	1.47
64.12480	876.9	1.28
65.56133	945.9	1.38
67.37568	911.3	1.33
70.06578	3161.2	4.63
70.17002	935.3	1.37
71.27693	983.5	1.44
72.08151	2748.2	4.02
73.94161	904.8	1.32
80.58399	770.8	1.13
83.37513	895.8	1.31
84.08138	41492.7	60.72
85.59344	917.4	1.34
86.06065	12682.5	18.56
86.09685	2804.9	4.10
87.30490	945.7	1.38
88.26679	826.6	1.21
94.10411	929.0	1.36
98.09677	17950.0	26.27
101.05610	995.5	1.46
105.04042	1026.7	1.50
110.67816	1261.9	1.85
114.09164	7990.9	11.69
115.12316	27216.7	39.83
118.04478	1099.7	1.61
120.55779	1042.0	1.52
127.12343	3328.8	4.87
130.06529	7848.5	11.48
132.84889	946.2	1.38
133.31757	994.1	1.45
140.37967	973.3	1.42
141.13850	1147.9	1.68
144.09544	958.1	1.40
147.13694	1062.2	1.55
148.14442	1168.1	1.71
148.63660	1096.4	1.60
188.17569	10374.7	15.18
200.81497	1237.5	1.81
203.13899	1036.8	1.52
206.16415	1248.3	1.83
216.63537	1144.6	1.67
241.13350	6988.0	10.23
242.16867	1088.2	1.59
243.14967	1061.6	1.55
250.04118	1134.7	1.66
262.52274	1042.8	1.53
262.73775	1079.2	1.58
275.27132	1196.2	1.75



NL: 1.13E6
 Hololenasp#5359 RT:
 13.39 AV: 1 T: FTMS + p
 ESI Full lock ms
 [100.00-1500.00]

NL: 6.79E4
 Hololenasp#5351-5376
 RT: 13.38-13.42 AV: 4 F:
 FTMS + p ESI d Full ms2
 463.34@hcd35.00
 [50.00-490.00]

Hololenasp#5354-5372 RT: 13.38-13.42 AV: 4

F: FTMS + p ESI d Full ms2 463.34@hcd35.00 [50.00-490.00]

m/z= 50.00000-1000.00000

m/z	Intensity	Relative
57.75131	968.5	1.42
58.06589	9072.8	13.28
63.02451	1007.2	1.47
65.56133	945.9	1.38
70.06578	3161.2	4.63
71.27693	983.5	1.44
72.08151	2748.2	4.02
84.08138	41492.7	60.72
86.06065	12682.5	18.56
86.09685	2804.9	4.10
98.09677	17950.0	26.27
101.05610	995.5	1.46
105.04042	1026.7	1.50
110.67816	1261.9	1.85
114.09164	7990.9	11.69
115.12316	27216.7	39.83
118.04478	1099.7	1.61
120.55779	1042.0	1.52
127.12343	3328.8	4.87
130.06529	7848.5	11.48
132.84889	946.2	1.38
133.31757	994.1	1.45
140.37967	973.3	1.42
141.13850	1147.9	1.68
144.09544	958.1	1.40
147.13694	1062.2	1.55
148.14442	1168.1	1.71
148.63660	1096.4	1.60
188.17569	10374.7	15.18
200.81497	1237.5	1.81
203.13899	1036.8	1.52
206.16415	1248.3	1.83
216.63537	1144.6	1.67
241.13350	6988.0	10.23
242.16867	1088.2	1.59
243.14967	1061.6	1.55
250.04118	1134.7	1.66
262.52274	1042.8	1.53
262.73775	1079.2	1.58

Hololenasp#5354-5372 RT: 13.38-13.42 AV: 4

F: FTMS + p ESI d Full ms2 463.34@hcd35.00 [50.00-490.00]

m/z= 50.00000-1000.00000

m/z	Intensity	Relative
275.27132	1196.2	1.75
285.31717	1255.1	1.84
302.18567	1717.9	2.51
316.20153	3277.0	4.80
318.80341	1008.7	1.48
318.98798	1034.9	1.51
331.79834	1176.2	1.72
352.19927	1259.4	1.84
373.26301	1180.1	1.73
379.96198	1179.9	1.73
384.60353	1391.5	2.04
389.25377	4013.8	5.87
434.51905	1187.4	1.74
461.24716	1235.3	1.81
463.33897	68338.5	100.00
468.81368	1338.3	1.96