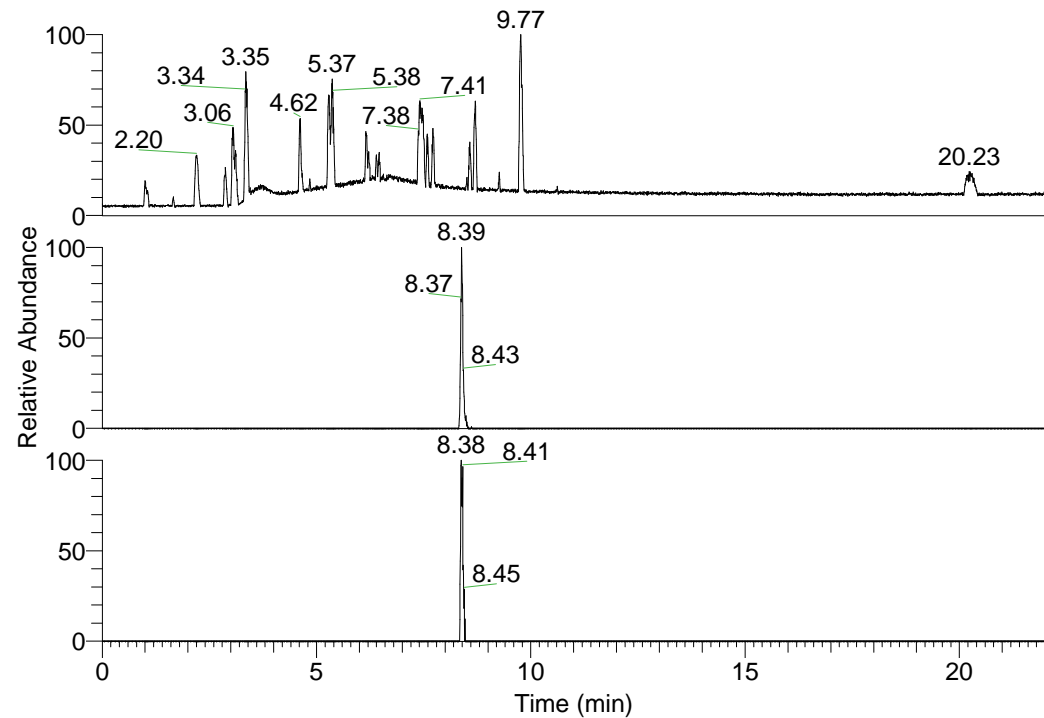


RT: 0.00 - 22.01



NL: 1.37E8
Base Peak m/z=
100.00000-1500.00000 F:
FTMS + p ESI Full ms
[100.00-1500.00] MS
Hololenasp_HDX

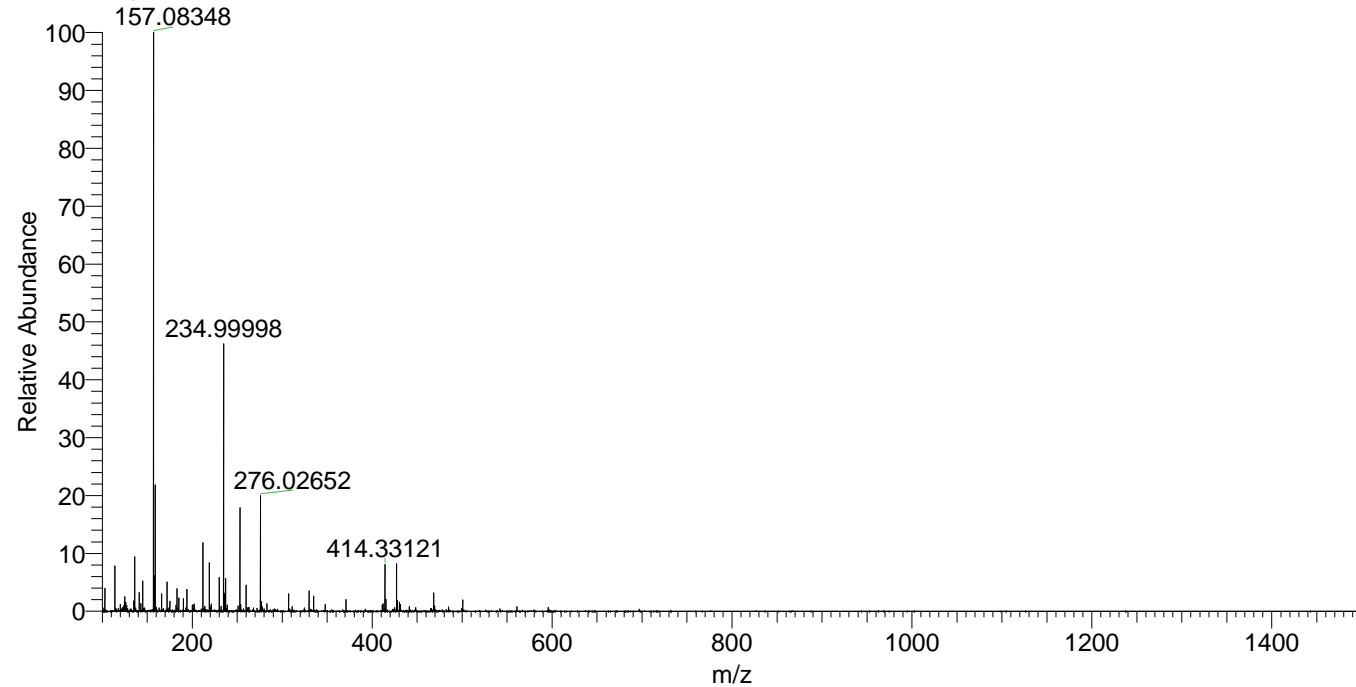
Hololenasp_HDX#1356 RT: 8.39
T: FTMS + p ESI Full ms [100.00-1500.00]
m/z = 468.00000-469.00000

m/z	Intensity	Relative	Delta (ppm)	Composition
468.40363	655666.4	100.00	-0.35	C ₂₅ H ₃₈ ² H ₇ O ₂ N ₆
			2.96	C ₂₅ H ₃₆ ² H ₈ O ₂ N ₆
			-3.65	C ₂₅ H ₄₀ ² H ₆ O ₂ N ₆

NL: 7.29E5
Base Peak m/z=
468.40200-468.40668 F: FTMS
+ p ESI Full ms
[100.00-1500.00] MS
Hololenasp_HDX

NL: 6.01E4
Base Peak m/z=
235.20804-235.21040 F: FTMS
+ p ESI Full ms
[100.00-1500.00] MS
Hololenasp_HDX

Hololenasp_HDX #1356 RT: 8.39 AV: 1 NL: 2.01E7
T: FTMS + p ESI Full ms [100.00-1500.00]



Hololenasp_HDX #1356 RT: 8.39 AV: 1 NL: 6.41E5
T: FTMS + p ESI Full ms [100.00-1500.00]

