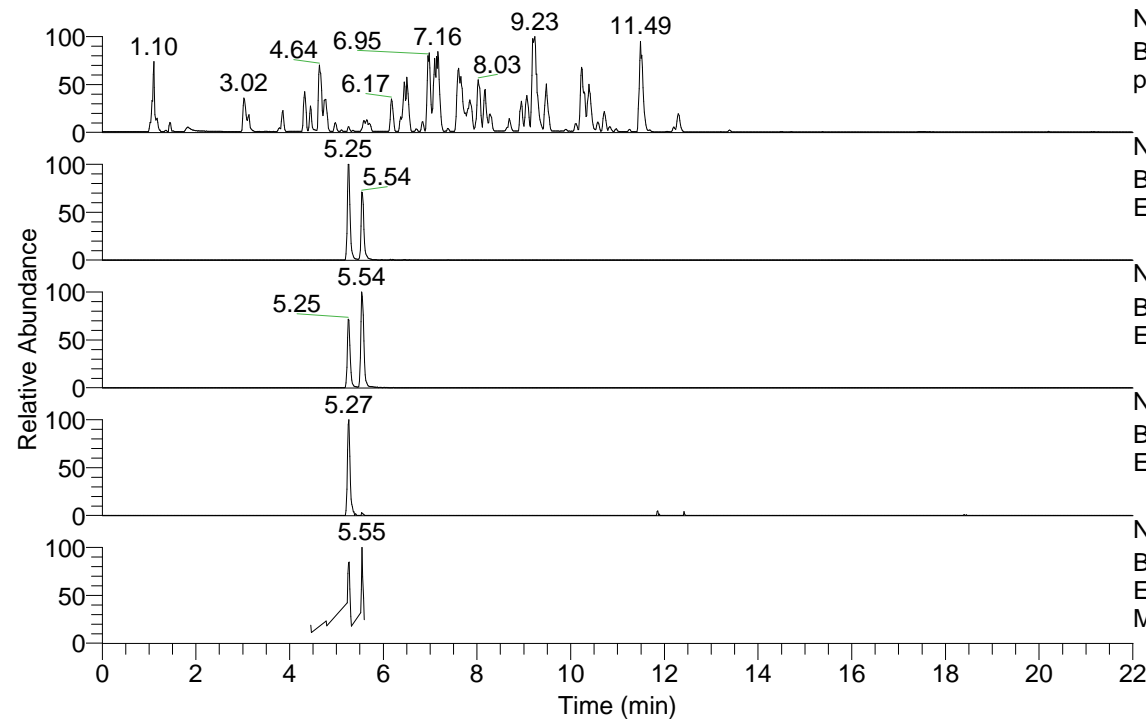


RT: 0.00 - 22.00



NL: 4.98E7
 Base Peak m/z= 100.00000-1500.00000 F: FTMS + p ESI Full ms [100.00-1500.00] MS Hololenasp

NL: 2.09E6
 Base Peak m/z= 452.35781-452.36233 F: FTMS + p ESI Full ms [100.00-1500.00] MS Hololenasp

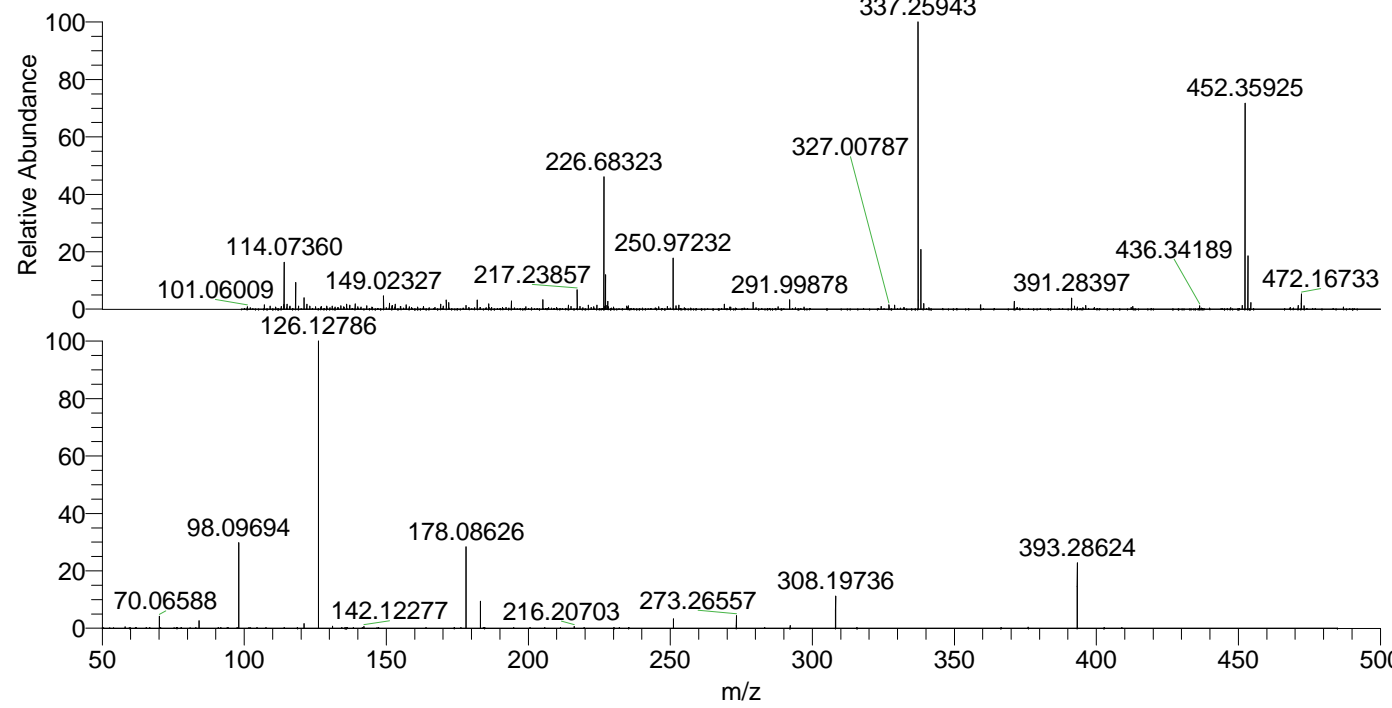
NL: 1.81E6
 Base Peak m/z= 226.68282-226.68508 F: FTMS + p ESI Full ms [100.00-1500.00] MS Hololenasp

NL: 1.14E5
 Base Peak m/z= 566.35010-566.35576 F: FTMS + p ESI Full ms [100.00-1500.00] MS Hololenasp

NL: 4.99E5
 Base Peak m/z= 50.00000-1500.00000 F: FTMS + p ESI d Full ms2 452.34@hcd35.00 [50.00-480.00] MS Hololenasp

Hololenasp#2086-2109 RT: 5.23-5.29
 F: FTMS + p ESI d Full ms2 452.34 ...
 m/z= 50.00000-1000.00000

m/z	Intensity	Relative
58.06593	1698.0	0.54
70.06588	13061.9	4.12
84.08152	8447.4	2.66
98.09694	94651.8	29.85
121.02873	5178.1	1.63
126.12786	317041.0	100.00
131.11800	2296.4	0.72
142.12277	1896.3	0.60
178.08626	89522.1	28.24
183.18602	29730.5	9.38
216.20703	2051.1	0.65
251.13937	10706.7	3.38
273.26557	13758.3	4.34
292.20235	3127.1	0.99
308.19736	35121.2	11.08
393.28624	73034.4	23.04



NL: 2.74E6
 Hololenasp#2095 RT:
 5.25 AV: 1 T: FTMS + p
 ESI Full lock ms
 [100.00-1500.00]

NL: 3.12E5
 Hololenasp#2084-2109
 RT: 5.23-5.29 AV: 5 F:
 FTMS + p ESI d Full ms2
 452.34@hcd35.00
 [50.00-480.00]