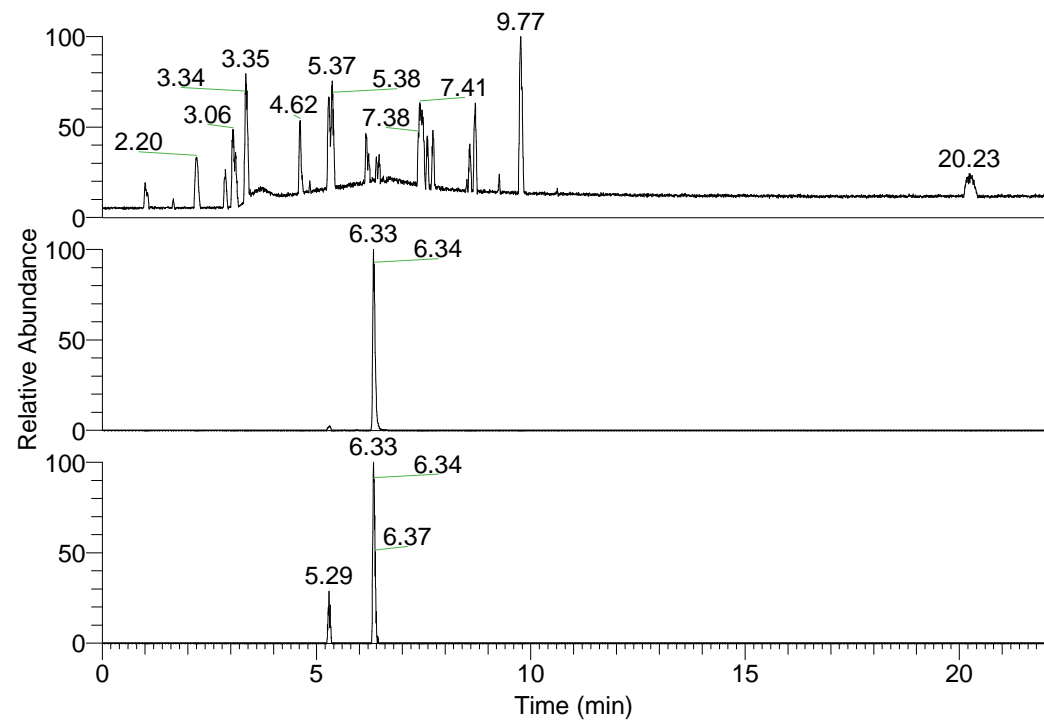


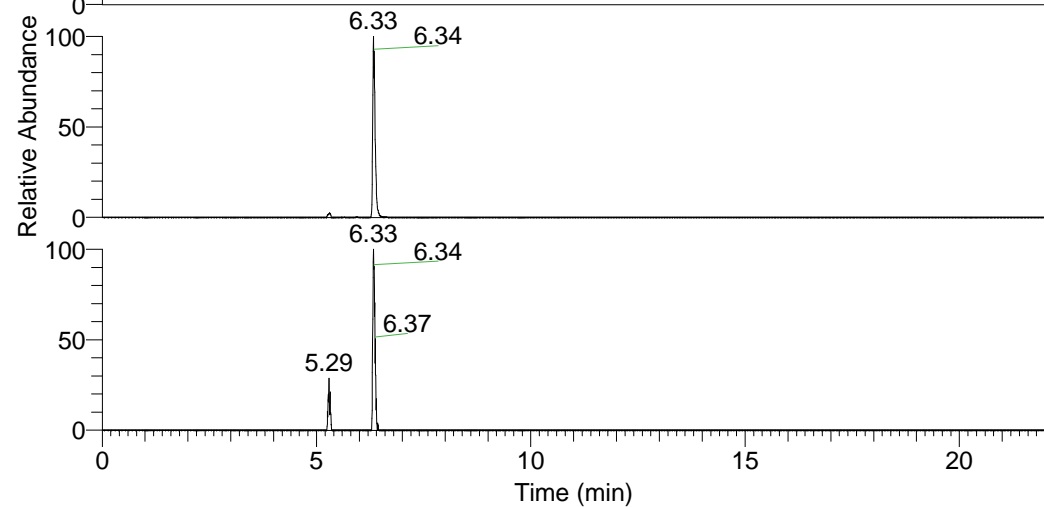
RT: 0.00 - 22.01



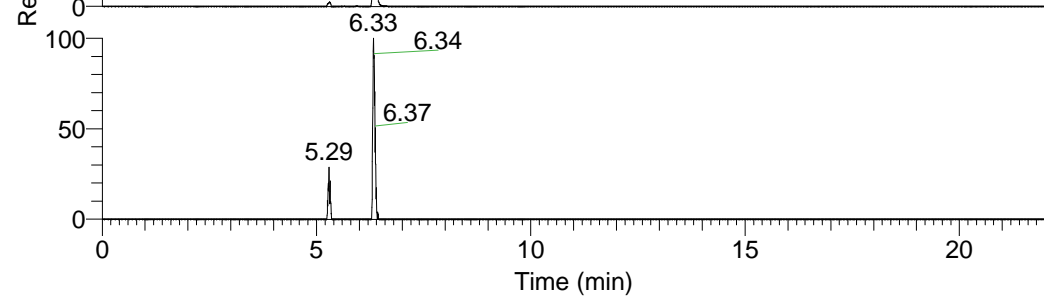
NL: 1.37E8
 Base Peak m/z=
 100.00000-1500.00000 F:
 FTMS + p ESI Full ms
 [100.00-1500.00] MS
 Hololenasp_HDX

Hololenasp_HDX#1009 RT: 6.33
 T: FTMS + p ESI Full ms [100.00-1500.00]
 m/z= 460.00000-461.00000

m/z	Intensity	Relative	Delta (ppm)	Composition
460.35910	10288392.0	100.00	-0.26	C ₂₂ H ₃₀ ² H ₉ O ₄ N ₆
			3.10	C ₂₂ H ₂₈ ² H ₁₀ O ₄ N ₆
			-3.63	C ₂₂ H ₃₂ ² H ₈ O ₄ N ₆

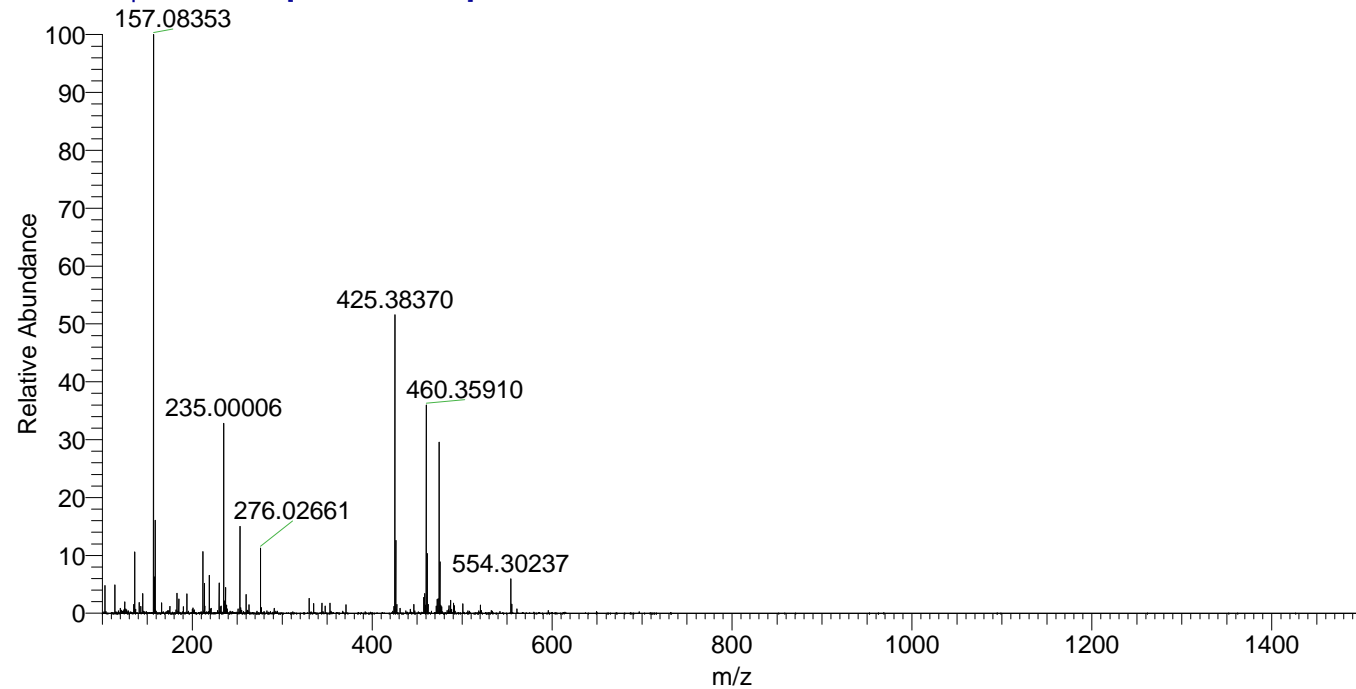


NL: 1.03E7
 Base Peak m/z=
 460.35747-460.36207 F: FTMS
 + p ESI Full ms
 [100.00-1500.00] MS
 Hololenasp_HDX



NL: 3.24E5
 Base Peak m/z=
 231.18578-231.18810 F: FTMS
 + p ESI Full ms
 [100.00-1500.00] MS
 Hololenasp_HDX

Hololenasp_HDX #1009 RT: 6.33 AV: 1 NL: 2.85E7
 T: FTMS + p ESI Full ms [100.00-1500.00]



Hololenasp_HDX #1009 RT: 6.33 AV: 1 NL: 1.02E7
 T: FTMS + p ESI Full ms [100.00-1500.00]

