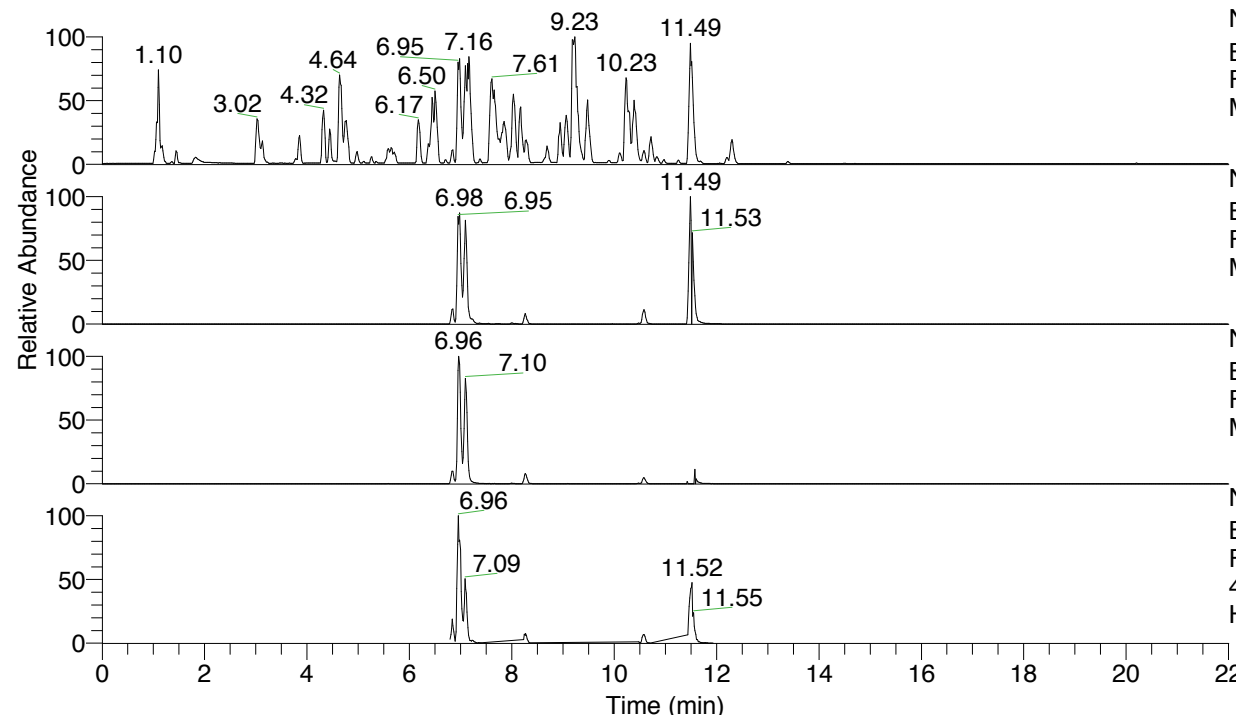


RT: 0.00 - 22.00



NL: 4.98E7
 Base Peak m/z= 100.00000-1500.00000 F:
 FTMS + p ESI Full ms [100.00-1500.00]
 MS Hololenasp

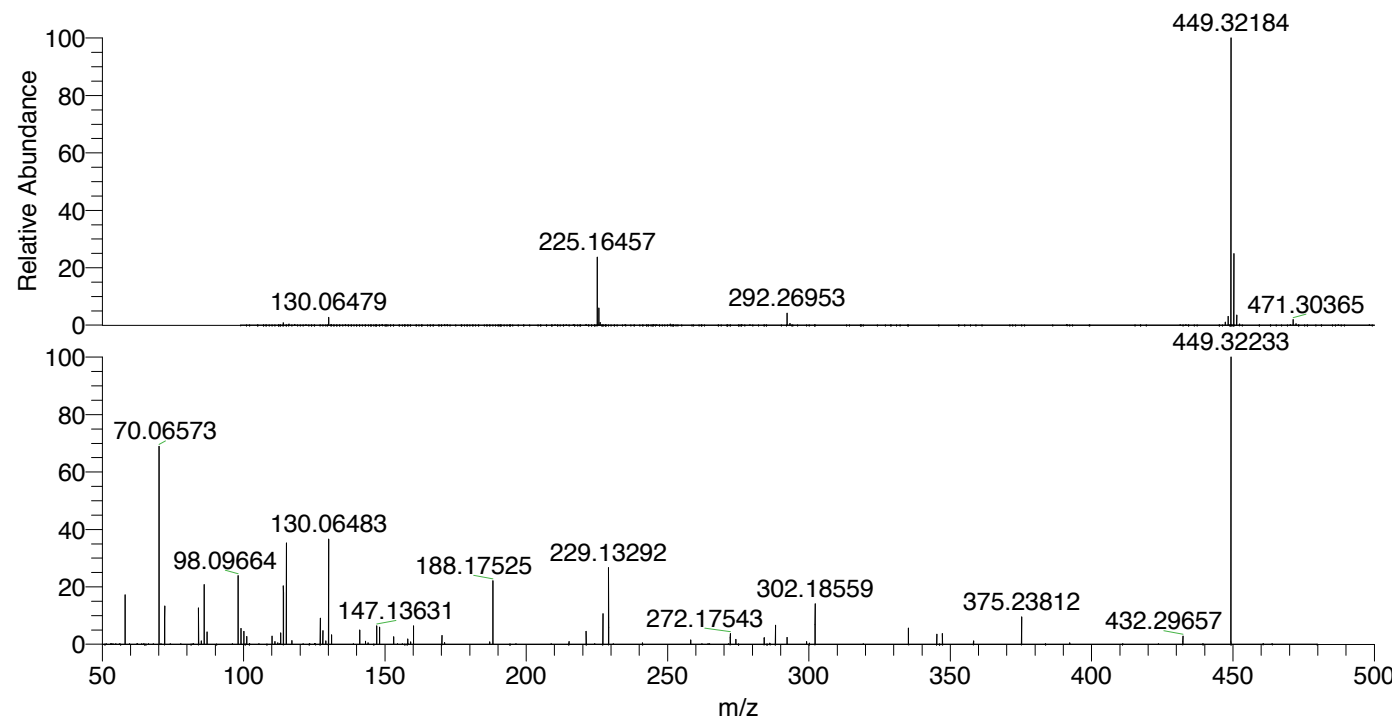
NL: 4.73E7
 Base Peak m/z= 449.32176-449.32626 F:
 FTMS + p ESI Full ms [100.00-1500.00]
 MS Hololenasp

NL: 1.23E7
 Base Peak m/z= 225.16479-225.16705 F:
 FTMS + p ESI Full ms [100.00-1500.00]
 MS Hololenasp

NL: 6.07E6
 Base Peak m/z= 50.00000-1500.00000 F:
 FTMS + p ESI d Full ms2
 449.32@hcd35.00 [50.00-475.00] MS
 Hololenasp

Hololenasp#4586-4622 RT: 11.45-11.53
 F: FTMS + p ESI d Full ms2 449.32@h ...
 m/z= 50.00000-1000.00000

m/z	Intensity	Relative
58.06585	352192.4	17.21
70.06573	1410704.0	68.92
72.08134	279451.3	13.65
84.08121	260080.7	12.71
85.07648	24904.7	1.22
86.06045	430531.4	21.03
87.09201	87797.8	4.29
98.09664	498365.8	24.35
99.09194	112212.7	5.48
100.07595	91897.2	4.49
101.10757	56532.2	2.76
110.09649	58528.9	2.86
111.09157	19053.9	0.93
113.10735	84907.6	4.15
114.09132	419247.3	20.48
115.12301	745157.0	36.40
117.10232	25955.7	1.27
127.12285	188409.6	9.20
128.10688	98347.1	4.80
129.10217	25001.8	1.22
130.06483	753796.9	36.83
131.11778	68187.1	3.33
141.13844	102006.3	4.98
143.11725	21311.0	1.04
147.13631	132249.4	6.46
148.14415	122660.3	5.99
153.13842	52978.5	2.59
158.05973	38542.4	1.88
159.09150	18345.5	0.90
160.14407	130208.8	6.36
170.16483	62929.4	3.07
171.14886	12265.8	0.60
187.08639	18090.1	0.88
188.17525	471628.0	23.04
215.11774	18868.3	0.92
221.19686	93805.2	4.58
227.11739	227117.3	11.10
229.13292	549293.3	26.84
241.13380	10325.7	0.50
258.15893	31481.6	1.54
272.17543	79386.6	3.88
274.15469	36310.9	1.77
284.17487	48253.3	2.36
288.17042	138168.4	6.75
292.27002	49649.4	2.43
299.18610	19933.9	0.97
302.18559	289059.0	14.12
335.20697	117444.5	5.74
345.22784	72863.5	3.56
347.20777	76428.2	3.73
358.23574	24318.3	1.19
375.23812	197201.0	9.63
432.29657	59134.5	2.89
449.32233	2046905.5	100.00



NL: 4.68E7
 Hololenasp#4603 RT:
 11.49 AV: 1 T: FTMS + p
 ESI Full ms
 [100.00-1500.00]

NL: 2.05E6
 Hololenasp#4585-4627
 RT: 11.45-11.53 AV: 7 F:
 FTMS + p ESI d Full ms2
 449.32@hcd35.00
 [50.00-475.00]

Hololenasp#4586-4622 RT: 11.45-11.53 AV: 7

F: FTMS + p ESI d Full ms2 449.32@hcd35.00 [50.00-475.00]

m/z= 50.00000-1000.00000

m/z	Intensity	Relative
58.06585	352192.4	17.21
70.06573	1410704.0	68.92
72.08134	279451.3	13.65
84.08121	260080.7	12.71
85.07648	24904.7	1.22
86.06045	430531.4	21.03
87.09201	87797.8	4.29
98.09664	498365.8	24.35
99.09194	112212.7	5.48
100.07595	91897.2	4.49
101.10757	56532.2	2.76
110.09649	58528.9	2.86
111.09157	19053.9	0.93
113.10735	84907.6	4.15
114.09132	419247.3	20.48
115.12301	745157.0	36.40
117.10232	25955.7	1.27
127.12285	188409.6	9.20
128.10688	98347.1	4.80
129.10217	25001.8	1.22
130.06483	753796.9	36.83
131.11778	68187.1	3.33
141.13844	102006.3	4.98
143.11725	21311.0	1.04
147.13631	132249.4	6.46
148.14415	122660.3	5.99
153.13842	52978.5	2.59
158.05973	38542.4	1.88
159.09150	18345.5	0.90
160.14407	130208.8	6.36
170.16483	62929.4	3.07
171.14886	12265.8	0.60
187.08639	18090.1	0.88
188.17525	471628.0	23.04
215.11774	18868.3	0.92
221.19686	93805.2	4.58
227.11739	227117.3	11.10
229.13292	549293.3	26.84
241.13380	10325.7	0.50

Hololenasp#4586-4622 RT: 11.45-11.53 AV: 7

F: FTMS + p ESI d Full ms2 449.32@hcd35.00 [50.00-475.00]

m/z= 50.00000-1000.00000

m/z	Intensity	Relative
258.15893	31481.6	1.54
272.17543	79386.6	3.88
274.15469	36310.9	1.77
284.17487	48253.3	2.36
288.17042	138168.4	6.75
292.27002	49649.4	2.43
299.18610	19933.9	0.97
302.18559	289059.0	14.12
335.20697	117444.5	5.74
345.22784	72863.5	3.56
347.20777	76428.2	3.73
358.23574	24318.3	1.19
375.23812	197201.0	9.63
432.29657	59134.5	2.89
449.32233	2046905.5	100.00